

Allgemeine Informationen

Katalog-Nr.: 66917-1-Ig	GenBank-Zugangsnummer: BC136418	Reinigungsmethode: Protein-G-Reinigung
Größe: 150ul , Konzentration: 913 µg/ml durch die Bradford-Methode mit BSA als Standard;	GeneID (NCBI): 4773	CloneNo.: 1F3B2
Wirt: Maus	Vollständiger Name: nuclear factor of activated T-cells, cytoplasmic, calcineurin-dependent 2	Empfohlene Verdünnungen: WB 1:1000-1:4000 IHC 1:50-1:500 IF 1:50-1:500
Isotyp: IgG1	Berechnete Masse: 925 aa, 100 kDa	
Immunogen Katalognummer: AG17990	Beobachtete Masse: 135-140 kDa	

Anwendungen

Geprüfte Anwendungen:

FC, IF, IHC, WB, ELISA

Getestete Reaktivität:

Human, Maus

Hinweis-IHC: Antigendemaskierung mit TE-Puffer pH 9,0 empfohlen. (*) Wahlweise kann die Antigendemaskierung auch mit Citratpuffer pH 6,0 erfolgen.

Positivkontrollen:

WB : Ramos-Zellen, Daudi-Zellen, Jurkat-Zellen

IHC : humanes Mammakarzinomgewebe, humanes Lymphomgewebe, Maushodengewebe

IF : HepG2-Zellen,

Hintergrundinformationen

Nuclear factor of activated T-cells, cytoplasmic 2 (NFATC2), also named NFAT1, or NFATP, is a 925 amino acid protein, which is expressed in thymus, spleen, heart, testis, brain, placenta, muscle and pancreas. Cytoplasmic for the phosphorylated form and nuclear after activation that is controlled by calcineurin-mediated dephosphorylation. Rapid nuclear exit of NFATC is thought to be one mechanism by which cells distinguish between sustained and transient calcium signals. The subcellular localization of NFATC plays a key role in the regulation of gene transcription. NFATC2 plays a role in the inducible expression of cytokine genes in T-cells, especially in the induction of the IL-2, IL-3, IL-4, TNF-alpha or GM-CSF. NFATC2 promotes invasive migration through the activation of GPC6 expression and WNT5A signaling pathway. The calculated molecular weight of NFATC2 is about 97-100 kDa, but the modified NFATC2 protein is about 135 kDa.

Lagerung

Lagerungsbedingungen:

Bei -20°C lagern. Nach dem Versand ein Jahr lang stabil

Lagerungspuffer:

PBS mit 0.02% Natriumazid und 50% Glycerin pH 7.3.

Aliquotieren ist nicht notwendig bei -20°C Lagerung

***** 20ul-Größen enthalten 0.1% BSA**

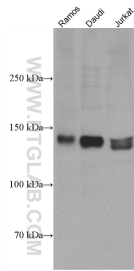
For technical support and original validation data for this product please contact:

T: 1 (888) 4PTGLAB (1-888-478-4522) (toll free in USA), or 1(312) 455-8498 (outside USA)

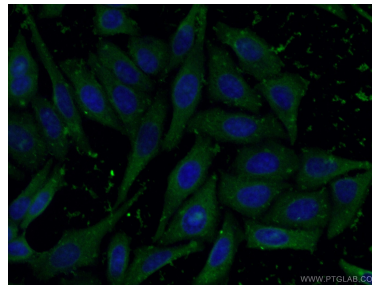
E: proteintech@ptglab.com
W: ptglab.com

This product is exclusively available under Proteintech Group brand and is not available to purchase from any other manufacturer.

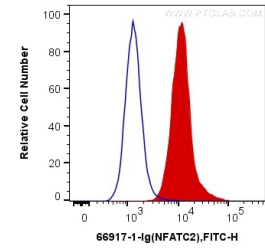
Ausgewählte Validierungsdaten



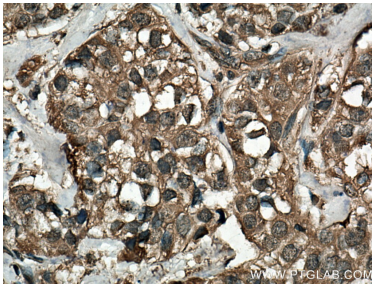
Various lysates were subjected to SDS PAGE followed by western blot with 66917-1-Ig (NFATC2 antibody) at dilution of 1:2000 incubated at room temperature for 1.5 hours.



Immunofluorescent analysis of (-20°C Ethanol) fixed HepG2 cells using 66917-1-Ig (NFATC2 antibody) at dilution of 1:100 and CoraLite488-Conjugated AffiniPure Goat Anti-Mouse IgG(H+L).



1X10⁶ Jurkat cells were intracellularly stained with 0.2 ug Anti-Human NFATC2 (66917-1-Ig, Clone:1F3B2) and CoraLite®488-Conjugated AffiniPure Goat Anti-Mouse IgG(H+L) at dilution 1:1000 (red), or 0.2 ug Mouse IgG1 Isotype Control (66360-1-Ig, Clone: T1F8D3F10) (blue). Cells were fixed with 4% PFA and permeabilized with Flow Cytometry Perm Buffer (PF00011-C).



Immunohistochemical analysis of paraffin-embedded human breast cancer tissue slide using 66917-1-Ig (NFATC2 antibody) at dilution of 1:200 (under 40x lens). Heat mediated antigen retrieval with Tris-EDTA buffer (pH 9.0).