

Nur für Forschungszwecke

ROR1 Monoklonaler Antikörper

Katalog-Nr.:66923-1-Ig

Vorgestelltes Produkt

1 Publikationen



Allgemeine Informationen

Katalog-Nr.: 66923-1-Ig	GenBank-Zugangsnummer: BC006374	Reinigungsmethode: Protein-A-Reinigung
Größe: 150ul, Konzentration: 1500 µg/ml von4919 Nanodrop;	GeneID (NCBI): 4919	CloneNo.: 1F5D8
Wirt: Maus	Vollständiger Name: receptor tyrosine kinase-like orphan receptor 1	Empfohlene Verdünnungen: WB 1:1000-1:6000 IHC 1:300-1:1200
Isotyp: IgG1	Berechnete Masse: 937 aa, 104 kDa	
Immunogen Katalognummer: AG14586	Beobachtete Masse: 130 kDa	

Anwendungen

Geprüfte Anwendungen:

FC, IHC, WB, ELISA

In Publikationen genannte Anwendungen:

IHC, WB

Getestete Reaktivität:

Human, Maus

Zitierte Arten:

Human

Positivkontrollen:

WB: A549-Zellen, HEK-293-Zellen, HeLa-Zellen, HepG2-Zellen, K-562-Zellen, NCI-H1299-Zellen, NIH/3T3-Zellen

IHC: humanes Mammakarzinomgewebe,

Hinweis-IHC: Antigendemaskierung mit TE-Puffer pH 9,0 empfohlen. (*) Wahlweise kann die Antigendemaskierung auch mit Citratpuffer pH 6,0 erfolgen.

Hintergrundinformationen

ROR1 is a member of the RTK family of orphan receptors related to muscle specific kinase and Trk neurotrophin receptors (PMID: 18546292). ROR1 is primarily expressed by neural crest cells during embryogenesis. High expression of ROR1 is reported in many types of malignancies and is thought to be involved in tumor growth, apoptosis, and epithelial-mesenchymal transition (PMID: 26245996). The human ROR1 gene encodes a 937-amino acid protein with an Ig-like domain, a cysteine-rich domain, a kringle domain, a tyrosine kinase domain and a proline-rich domain. The calculated molecular weight of ROR1 is 104 kDa, but ROR1 has multiple N-glycosylation sites that generate post-translationally modified ROR1 at 130 kDa (PMID: 24752542).

Bemerkenswerte Veröffentlichungen

Verfasser	Pubmed ID	Journal	Anwendung
Mengqi Liu	34599596	Acta Biochim Biophys Sin (Shanghai)	WB,IHC

Lagerung

Lagerungsbedingungen:

Bei -20°C lagern. Nach dem Versand ein Jahr lang stabil

Lagerungspuffer:

PBS mit 0.02% Natriumazid und 50% Glycerin pH 7.3.

Aliquotieren ist nicht notwendig bei -20°C Lagerung

*** 20ul-Größen enthalten 0.1% BSA

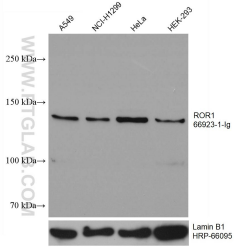
For technical support and original validation data for this product please contact:

T: 1 (888) 4PTGLAB (1-888-478-4522) (toll free in USA), or 1(312) 455-8498 (outside USA)

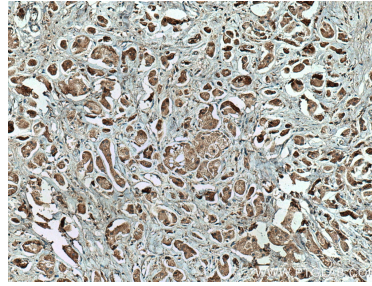
E: proteintech@ptglab.com
W: ptglab.com

This product is exclusively available under Proteintech Group brand and is not available to purchase from any other manufacturer.

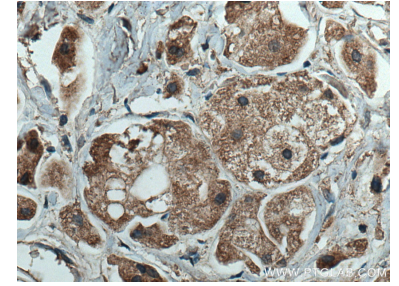
Ausgewählte Validierungsdaten



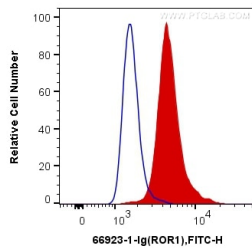
Various lysates were subjected to SDS PAGE followed by western blot with 66923-1-Ig (ROR1 antibody) at dilution of 1:3000 incubated at room temperature for 1.5 hours. The membrane was stripped and reblotted with HRP-conjugated Lamin B1 Monoclonal antibody (HRP-66095) as loading control.



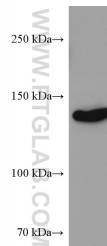
Immunohistochemical analysis of paraffin-embedded human breast cancer tissue slide using 66923-1-Ig (ROR1 antibody) at dilution of 1:600 (under 10x lens). Heat mediated antigen retrieval with Tris-EDTA buffer (pH 9.0).



Immunohistochemical analysis of paraffin-embedded human breast cancer tissue slide using 66923-1-Ig (ROR1 antibody) at dilution of 1:600 (under 40x lens). Heat mediated antigen retrieval with Tris-EDTA buffer (pH 9.0).



1×10^6 K-562 cells were intracellularly stained with 0.4 μ g Anti-Human ROR1 (66923-1-Ig, Clone:1F5D8) and CoraLite[®]488-Conjugated AffiniPure Goat Anti-Mouse IgG(H+L) at dilution 1:1000 (red), or 0.4 μ g Mouse IgG1 Isotype Control (66360-1-Ig, Clone: T1F8D3F10) (blue). Cells were fixed with 4% PFA and permeabilized with Flow Cytometry Perm Buffer (PF00011-C).



NIH/3T3 cells were subjected to SDS PAGE followed by western blot with 66923-1-Ig (ROR1 antibody) at dilution of 1:3000 incubated at room temperature for 1.5 hours.