

Allgemeine Informationen

Katalog-Nr.: 66939-1-Ig	GenBank-Zugangsnummer: BC033009	Reinigungsmethode: Protein-A-Reinigung
Größe: 150ul , Konzentration: 2200 µg/ml von125 Nanodrop und 1000 µg/ml durch die Bradford-Methode mit BSA als Standard;	GeneID (NCBI): 125	CloneNo.: 1F1B4
Wirt: Maus	Vollständiger Name: alcohol dehydrogenase 1B (class I), beta polypeptide	Empfohlene Verdünnungen: WB 1:2000-1:10000 IHC 1:1000-1:4000 IF 1:200-1:800
Isotyp: IgG2a	Berechnete Masse: 375 aa, 40 kDa	
Immunogen Katalognummer: AG10630	Beobachtete Masse: 35-40 kDa	

Anwendungen

Geprüfte Anwendungen: IF, IHC, WB, ELISA	Positivkontrollen: WB : L02-Zellen, Hausschwein-Lebergewebe, HepG2-Zellen, HuH-7-Zellen, Rattenlebergewebe, SMMC-7721-Zellen
In Publikationen genannte Anwendungen: IHC, WB	IHC : humanes Leberkarzinomgewebe,
Getestete Reaktivität: Hausschwein, Human, Maus, Ratte	IF : HepG2-Zellen,
Zitierte Arten: Human, Maus	
Hinweis-IHC: Antigenmaskierung mit TE-Puffer pH 9,0 empfohlen. (*) Wahlweise kann die Antigenmaskierung auch mit Citratpuffer pH 6,0 erfolgen.	

Hintergrundinformationen

The ADH1B gene encodes the beta subunit of class I alcohol dehydrogenase (ADH), an enzyme that catalyzes the rate-limiting step for ethanol metabolism: the oxidation of alcohol to acetaldehyde. Class I ADH is a homo- or heterodimeric molecule, formed by the association of 3 types of class I ADH subunits, alpha (ADH1A), beta, and gamma (ADH1C). ADH1B is also named as ADH2 and belongs to the zinc-containing alcohol dehydrogenase family. This protein can exist as a homodimer (PMID:19365573).

Bemerkenswerte Veröffentlichungen

Verfasser	Pubmed ID	Journal	Anwendung
Chengmao Xie	35938015	Front Genet	WB
Chi-Yao Hsueh	35198889	iScience	WB,IHC
Limin Gao	35115920	Front Pharmacol	WB

Lagerung

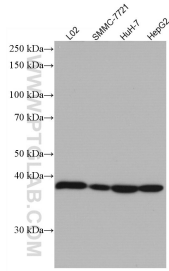
Lagerungsbedingungen:
Bei -20°C lagern. Nach dem Versand ein Jahr lang stabil
Lagerungspuffer:
PBS mit 0.02% Natriumazid und 50% Glycerin pH 7.3.
 Aliquotieren ist nicht notwendig bei -20°C Lagerung

***** 20ul-Größen enthalten 0.1% BSA**

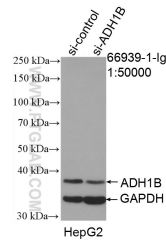
For technical support and original validation data for this product please contact:
 T: 1 (888) 4PTGLAB (1-888-478-4522) (toll free in USA), or 1(312) 455-8498 (outside USA)
 E: proteintech@ptglab.com
 W: ptglab.com

This product is exclusively available under Proteintech Group brand and is not available to purchase from any other manufacturer.

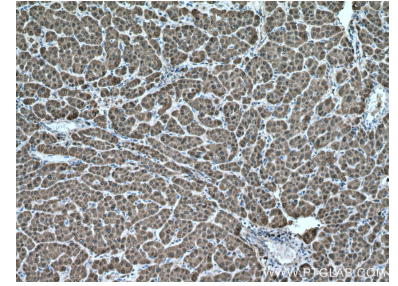
Ausgewählte Validierungsdaten



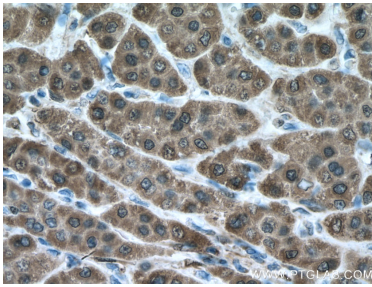
Various lysates were subjected to SDS PAGE followed by western blot with 66939-1-Ig (ADH1B antibody) at dilution of 1:5000 incubated at room temperature for 1.5 hours.



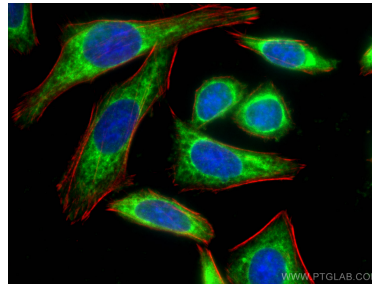
WB result of ADH1B antibody (66939-1-Ig; 1:50000; incubated at room temperature for 1.5 hours) with sh-Control and sh-ADH1B transfected HepG2 cells.



Immunohistochemical analysis of paraffin-embedded human liver cancer tissue slide using 66939-1-Ig (ADH1B antibody) at dilution of 1:2000 (under 10x lens. Heat mediated antigen retrieval with Tris-EDTA buffer (pH 9.0).



Immunohistochemical analysis of paraffin-embedded human liver cancer tissue slide using 66939-1-Ig (ADH1B antibody) at dilution of 1:2000 (under 40x lens. Heat mediated antigen retrieval with Tris-EDTA buffer (pH 9.0).



Immunofluorescent analysis of (-20°C Ethanol) fixed HepG2 cells using ADH1B antibody (66939-1-Ig, Clone: 1F1B4) at dilution of 1:400 and CoraLite® 488-Conjugated AffiniPure Goat Anti-Mouse IgG(H+L), CL594-Phalloidin (red).