

Nur für Forschungszwecke

RACK1; GNB2L1 Monoklonaler Antikörper

Katalog-Nr.:66940-1-Ig



Allgemeine Informationen

Katalog-Nr.: 66940-1-Ig	GenBank-Zugangsnummer: BC019093	Reinigungsmethode: Protein-A-Reinigung
Größe: 150ul, Konzentration: 1600 µg/ml von10399 Nanodrop und 1000 µg/ml durch die Bradford-Methode mit BSA als Standard;	GeneID (NCBI): 10399	CloneNo.: 1E11A7
Wirt: Maus	Vollständiger Name: guanine nucleotide binding protein (GWB protein), beta polypeptide 2-like 1	Empfohlene Verdünnungen: IHC 1:250-1:1000 IF 1:200-1:800
Isotyp: IgG2a	Berechnete Masse: 36 kDa	
Immunogen Katalognummer: AG26708	Beobachtete Masse: 32 kDa	

Anwendungen

Geprüfte Anwendungen:

IF, IHC, WB, ELISA

Getestete Reaktivität:

Hausschwein, Human, Maus, Ratte

Hinweis-IHC: Antigenmaskierung mit TE-Puffer pH 9,0 empfohlen. (*) Wahlweise kann die Antigenmaskierung auch mit Citratpuffer pH 6,0 erfolgen.

Positivkontrollen:

WB: HeLa-Zellen, Hausschwein-Lebergewebe, HepG2-Zellen, L02-Zellen, NIH/3T3-Zellen, T-47D-Zellen

IHC: humanes Lungenkarzinomgewebe,

IF: HeLa-Zellen,

Hintergrundinformationen

Members of the protein kinase C (PKC) family play a key regulatory role in a variety of cellular functions, including cell growth and differentiation, gene expression, hormone secretion and membrane function. RACK1 (receptor for activated protein kinase C 1), encoded by GNB2L1 gene, is a 317 amino acid guanine nucleotide-binding protein subunit beta-2-like 1 protein which is involved in the recruitment, assembly and/or regulation of a variety of signaling molecules, it contains 7 WD-repeats and is implicated in various protein interaction activities. RACK1 is a component of the 40S ribosomal subunit involved in translational repression. Recent finding suggests that RACK1 may be a new promising diagnosis biomarker and therapeutic target for non-small-cell lung cancer (NSCLC).

Lagerung

Lagerungsbedingungen:

Bei -20°C lagern. Nach dem Versand ein Jahr lang stabil

Lagerungspuffer:

PBS mit 0.02% Natriumazid und 50% Glycerin pH 7.3.

Aliquotieren ist nicht notwendig bei -20°C Lagerung

*** 20ul-Größen enthalten 0.1% BSA

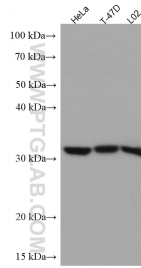
For technical support and original validation data for this product please contact:

T: 1 (888) 4PTGLAB (1-888-478-4522) (toll free in USA), or 1(312) 455-8498 (outside USA)

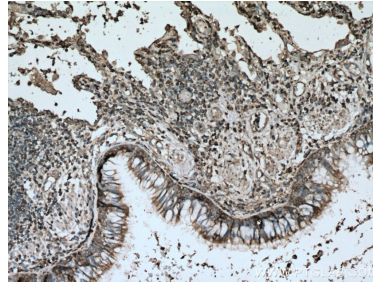
E: proteintech@ptglab.com
W: ptglab.com

This product is exclusively available under Proteintech Group brand and is not available to purchase from any other manufacturer.

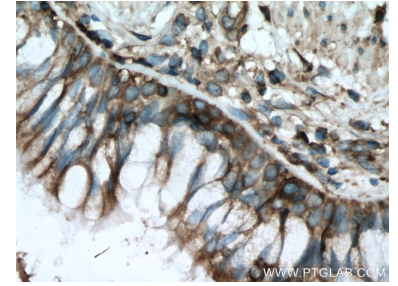
Ausgewählte Validierungsdaten



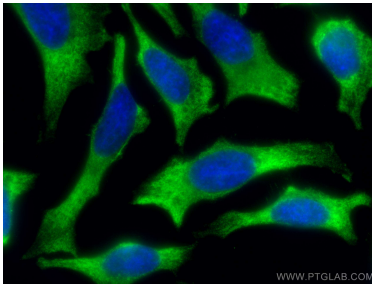
Various lysates were subjected to SDS PAGE followed by western blot with 66940-1-Ig (RACK1; GNB2L1 antibody) at dilution of 1:20000 incubated at room temperature for 1.5 hours.



Immunohistochemical analysis of paraffin-embedded human lung cancer tissue slide using 66940-1-Ig (RACK1; GNB2L1 antibody) at dilution of 1:500 (under 10x lens). Heat mediated antigen retrieval with Tris-EDTA buffer (pH 9.0).



Immunohistochemical analysis of paraffin-embedded human lung cancer tissue slide using 66940-1-Ig (RACK1; GNB2L1 antibody) at dilution of 1:500 (under 40x lens). Heat mediated antigen retrieval with Tris-EDTA buffer (pH 9.0).



Immunofluorescent analysis of (-20°C Methanol) fixed HeLa cells using RACK1; GNB2L1 antibody (66940-1-Ig, Clone: 1E11A7) at dilution of 1:400 and CoraLite®488-Conjugated AffiniPure Goat Anti-Mouse IgG(H+L).