

## Allgemeine Informationen

<b>Katalog-Nr.:</b> 66941-1-Ig	<b>GenBank-Zugangsnummer:</b> BC038301	<b>Reinigungsmethode:</b> Protein-A-Reinigung
<b>Größe:</b> 150ul , Konzentration: 1600 µg/ml von201299 Nanodrop und 1000 µg/ml durch die Bradford-Methode mit BSA als Standard;	<b>GeneID (NCBI):</b> von201299	<b>CloneNo.:</b> 1C10B4
<b>Wirt:</b> Maus	<b>Vollständiger Name:</b> RAD52 motif 1	<b>Empfohlene Verdünnungen:</b> WB 1:1000-1:6000 IHC 1:150-1:600 IF 1:200-1:800
<b>Isotyp:</b> IgG2a	<b>Berechnete Masse:</b> 284 aa, 32 kDa	
<b>Immunogen Katalognummer:</b> AG28686	<b>Beobachtete Masse:</b> 32 kDa	

## Anwendungen

<b>Geprüfte Anwendungen:</b> IF, IHC, WB,ELISA	<b>Positivkontrollen:</b>
<b>Getestete Reaktivität:</b> Human, Maus, Ratte	<b>WB :</b> PC-3-Zellen, HEK-293-Zellen, RAW 264.7-Zellen
<b>Hinweis-IHC: Antigenmaskierung mit TE-Puffer pH 9,0 empfohlen. (*) Wahlweise kann die Antigenmaskierung auch mit Citratpuffer pH 6,0 erfolgen.</b>	<b>IHC :</b> humanes Schilddrüsenkarzinomgewebe,
	<b>IF :</b> A549-Zellen,

## Hintergrundinformationen

RDM1, also named as RAD52B, encodes a RNA recognition motif (RRM)-containing protein conferred resistance to the antitumor agent cisplatin. The expression of RDM1 is closely related to the cell proliferation and apoptosis of thyroid carcinoma cells and RDM1 may be a potential marker of lung adenocarcinoma. RDM1 has many isoforms (8 kDa, 12-19 kDa and 25-32 kDa) with long or short N-terminus and a great diversity in the exonic composition of C-terminus generated by alternative pre-mRNA splicing and differential usage of two translational start sites. RDM1 protein can be expressed differently in cytoplasm or nuclear/nucleolar in the absence of stress, proteotoxic stress and mild heat shock, suggesting functional differences among the RDM1 proteins. ( PMID: 28939762, 17905820, 28939762, 30069034)

## Lagerung

**Lagerungsbedingungen:**  
Bei -20°C lagern. Nach dem Versand ein Jahr lang stabil  
**Lagerungspuffer:**  
PBS mit 0.02% Natriumazid und 50% Glycerin pH 7.3.  
**Aliquotieren ist nicht notwendig bei -20°C Lagerung**

\*\*\* 20ul-Größen enthalten 0.1% BSA

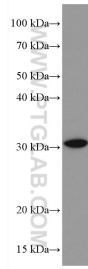
For technical support and original validation data for this product please contact:

T: 1 (888) 4PTGLAB (1-888-478-4522) (toll free  
in USA), or 1(312) 455-8498 (outside USA)

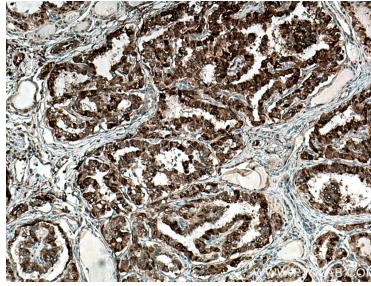
E: proteintech@ptglab.com  
W: ptglab.com

This product is exclusively available under Proteintech Group brand and is not available to purchase from any other manufacturer.

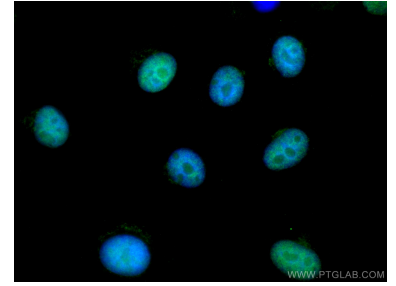
## Ausgewählte Validierungsdaten



PC-3 cells were subjected to SDS PAGE followed by western blot with 66941-1-Ig (RDM1 antibody) at dilution of 1:3000 incubated at room temperature for 1.5 hours.



Immunohistochemical analysis of paraffin-embedded human thyroid cancer tissue slide using 66941-1-Ig (RDM1 antibody) at dilution of 1:300 (under 10x lens). Heat mediated antigen retrieval with Tris-EDTA buffer (pH 9.0).



Immunofluorescent analysis of (4% PFA) fixed A549 cells using RDM1 antibody (66941-1-Ig, Clone: 1C10B4) at dilution of 1:400 and CoraLite®488-Conjugated AffiniPure Goat Anti-Mouse IgG(H+L).