

Nur für Forschungszwecke

Protein A Monoklonaler Antikörper

Katalog-Nr.: 66945-1-Ig **2 Publikationen**



Allgemeine Informationen

Katalog-Nr.: 66945-1-Ig
Größe: 150ul, Konzentration: 1500 µg/ml von Nanodrop und 1000 µg/ml durch die Bradford-Methode mit BSA als Standard;
Wirt: Maus
Isotyp: IgG2a

GenBank-Zugangsnummer: EU695225
GeneID (NCBI): **Vollständiger Name:**

Reinigungsmethode: Protein-G-Reinigung
CloneNo.: 1G6A6
Empfohlene Verdünnungen: WB 1:2000-1:10000

Anwendungen

Geprüfte Anwendungen: WB, ELISA
In Publikationen genannte Anwendungen: IP
Getestete Reaktivität: Staphylococcus Aureus
Zitierte Arten: Human

Positivkontrollen: WB : recombinant protein, recombinant protein

Hintergrundinformationen

Protein A is a surface protein of S.aureus which binds IgG molecules by their Fc region (PMID: 4163007). Engineered Protein A has been widely used in antibody purification due to its Fc binding property. However, trace of protein A might be leaked from purification resin thus causes contamination of final products. Antibody against Protein A or ELISA kits for Protein A could be used to evaluate leaking level of Protein A from resin. Protein A should be deactivated (e.g. boiling in 5-10% tween-20) before testing.

Bemerkenswerte Veröffentlichungen

Verfasser	Pubmed ID	Journal	Anwendung
Katsutoshi Yoshizato	35792074	J Biochem	
Qian Wang	17467839	Virus Res	IP

Lagerung

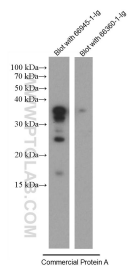
Lagerungsbedingungen: Bei -20°C lagern. Nach dem Versand ein Jahr lang stabil
Lagerungspuffer: PBS mit 0.02% Natriumazid und 50% Glycerin pH 7.3.
Aliquotieren ist nicht notwendig bei -20°C Lagerung

***** 20ul-Größen enthalten 0.1% BSA**

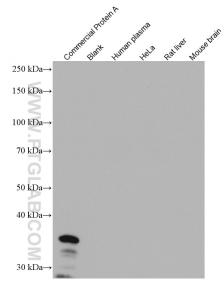
For technical support and original validation data for this product please contact:
T: 1 (888) 4PTGLAB (1-888-478-4522) (toll free in USA), or 1(312) 455-8498 (outside USA)
E: proteintech@ptglab.com
W: ptglab.com

This product is exclusively available under Proteintech Group brand and is not available to purchase from any other manufacturer.

Ausgewählte Validierungsdaten



Commercial Protein A was deactivated and lysed followed by SDS-PAGE and then blot with 66945-1-Ig (Protein A antibody) at dilution of 1:10000 and isotype control antibody 66360-1-Ig at 1:2000 incubated at room temperature for 1.5 hours.



Commercial Protein A and negative samples (human plasma, HeLa cells, rat liver, mouse brain) were subjected to SDS-PAGE followed by western blot with 66945-1-Ig (Protein A antibody) at dilution of 1:10000 incubated at room temperature for 1.5 hours.