

Nur für Forschungszwecke

PARD3 Monoklonaler Antikörper

Katalog-Nr.:66968-1-Ig



Allgemeine Informationen

Katalog-Nr.: 66968-1-Ig	GenBank-Zugangsnummer: BC011711	Reinigungsmethode: Protein-G-Reinigung
Größe: 150ul , Konzentration: 1200 µg/ml von56288 Nanodrop und 1000 µg/ml durch die Bradford-Methode mit BSA als Standard;	GeneID (NCBI): 56288	CloneNo.: 1D2B2
Wirt: Maus	Vollständiger Name: par-3 partitioning defective 3 homolog (C. elegans)	Empfohlene Verdünnungen: WB 1:1000-1:6000 IF 1:400-1:1600
Isotyp: IgG1	Berechnete Masse: 151 kDa	
Immunogen Katalognummer: AG7656	Beobachtete Masse: 170 kDa	

Anwendungen

Geprüfte Anwendungen: FC, IF, WB, ELISA	Positivkontrollen:
Getestete Reaktivität: Human	WB : MCF-7-Zellen, A431-Zellen, HEK-293-Zellen, HeLa-Zellen, HepG2-Zellen
	IF : MCF-7-Zellen,

Hintergrundinformationen

PARD3 (also known as ASIP, Par3, or Bazooka) is one of PARD proteins which are essential for asymmetric cell division and polarized growth. PAR3 is involved in the establishment of cell polarity and in the asymmetric cytokinesis. It plays a role in tight junctions at epithelial cell-cell contacts.

Lagerung

Lagerungsbedingungen:
Bei -20°C lagern. Nach dem Versand ein Jahr lang stabil

Lagerungspuffer:
PBS mit 0.02% Natriumazid und 50% Glycerin pH 7.3.

Aliquotieren ist nicht notwendig bei -20°C Lagerung

*** 20ul-Größen enthalten 0.1% BSA

For technical support and original validation data for this product please contact:

T: 1 (888) 4PTGLAB (1-888-478-4522) (toll free
in USA), or 1(312) 455-8498 (outside USA)

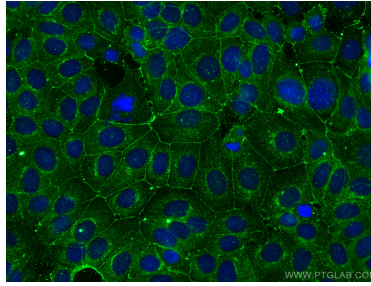
E: proteintech@ptglab.com
W: ptglab.com

This product is exclusively available under Proteintech Group brand and is not available to purchase from any other manufacturer.

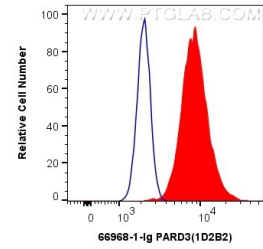
Ausgewählte Validierungsdaten



MCF-7 cells were subjected to SDS PAGE followed by western blot with 66968-1-Ig (PARD3 antibody) at dilution of 1:3000 incubated at room temperature for 1.5 hours.



Immunofluorescent analysis of (-20°C Methanol) fixed MCF-7 cells using PARD3 antibody (66968-1-Ig, Clone: 1D2B2) at dilution of 1:800 and CoraLite®488-Conjugated AffiniPure Goat Anti-Mouse IgG(H+L).



1X10⁶ MCF-7 cells were intracellularly stained with 0.4 ug Anti-Human PARD3 (66968-1-Ig, Clone:1D2B2) and CoraLite®488-Conjugated AffiniPure Goat Anti-Mouse IgG(H+L) at dilution 1:1000 (red), or 0.4 ug Control Antibody. Cells were fixed with 4% PFA and permeabilized with Flow Cytometry Perm Buffer (PF00011-C).