

Nur für Forschungszwecke

EPHX1 Monoklonaler Antikörper

Katalog-Nr.: 66982-1-Ig

Vorgestelltes Produkt



Allgemeine Informationen

Katalog-Nr.:

66982-1-Ig

GenBank-Zugangsnummer:

BC003567

Reinigungsmethode:

Protein-A-Reinigung

Größe:

150ul, Konzentration: 1500 µg/ml von 2052

GeneID (NCBI):

von 2052

CloneNo.:

1B6A2

Nanodrop und 1000 µg/ml durch die Bradford-Methode mit BSA als Standard;

Vollständiger Name:

epoxide hydrolase 1, microsomal (xenobiotic)

Empfohlene Verdünnungen:

WB 1:5000-1:50000

Wirt:

Maus

Berechnete Masse:

53 kDa

Isotyp:

IgG2b

Beobachtete Masse:

53 kDa

Immunogen Katalognummer:

AG25820

Anwendungen

Geprüfte Anwendungen:

WB, ELISA

Positivkontrollen:

WB: HeLa-Zellen, 4T1-Zellen, A549-Zellen, HepG2-Zellen, L02-Zellen, NCI-H1299-Zellen

Getestete Reaktivität:

Human, Maus

Hintergrundinformationen

EPHX1, also known as EPHX and EPOX, belongs to the peptidase S33 family. EPHX1 is an evolutionarily highly conserved biotransformation enzyme expressed in nearly all tissues and localized mainly in the microsomal fraction of the endoplasmic reticulum of eukaryotic cells. EPHX1 plays a role in the metabolism of endogenous lipids such as epoxide-containing fatty acids. The calculated molecular weight of EPHX1 is 53 kDa (PMID: 26216302).

Lagerung

Lagerungsbedingungen:

Bei -20°C lagern. Nach dem Versand ein Jahr lang stabil

Lagerungspuffer:

PBS with 0.1% sodium azide and 50% glycerol pH 7.3.

Aliquotieren ist nicht notwendig bei -20°C Lagerung

*** 20ul-Größen enthalten 0.1% BSA

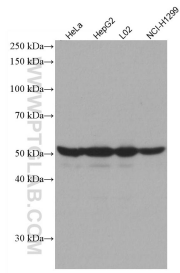
For technical support and original validation data for this product please contact:

T: 1 (888) 4PTGLAB (1-888-478-4522) (toll free in USA), or 1(312) 455-8498 (outside USA)

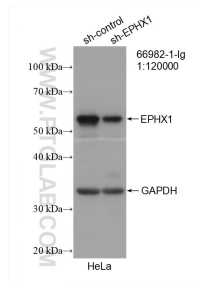
E: proteintech@ptglab.com
W: ptglab.com

This product is exclusively available under Proteintech Group brand and is not available to purchase from any other manufacturer.

Ausgewählte Validierungsdaten



Various lysates were subjected to SDS PAGE followed by western blot with 66982-1-Ig (EPHX1 antibody) at dilution of 1:10000 incubated at room temperature for 1.5 hours.



WB result of EPHX1 antibody (66982-1-Ig; 1:120000; incubated at room temperature for 1.5 hours) with sh-Control and sh-EPHX1 transfected HeLa cells.