

Nur für Forschungszwecke

SMC1A Monoklonaler Antikörper

Katalog-Nr.:66987-1-Ig **1 Publikationen**



Allgemeine Informationen

| | | |
|--|---|--|
| Katalog-Nr.: 66987-1-Ig | GenBank-Zugangsnummer: BC112127 | Reinigungsmethode: Protein-A-Reinigung |
| Größe: 150ul , Konzentration: 1900 µg/ml von8243 Nanodrop und 1000 µg/ml durch die Bradford-Methode mit BSA als Standard; | GeneID (NCBI): 150000 | CloneNo.: 1A5D2 |
| Wirt: Maus | Vollständiger Name: structural maintenance of chromosomes 1A | Empfohlene Verdünnungen: WB 1:1000-1:6000 IHC 1:150-1:600 |
| Isotyp: IgG2b | Berechnete Masse: 1233 aa, 143 kDa | |
| Immunogen Katalognummer: AG17257 | Beobachtete Masse: 150 kDa | |

Anwendungen

| | |
|--|--|
| Geprüfte Anwendungen: IHC, WB,ELISA | Positivkontrollen: WB : HeLa-Zellen, 4T1-Zellen, HEK-293-Zellen, HepG2- Zellen, Jurkat-Zellen, NIH/3T3-Zellen |
| In Publikationen genannte Anwendungen: WB | IHC : humanes Kolonkarzinomgewebe, |
| Getestete Reaktivität: Human, Maus, Ratte | |
| Zitierte Arten: Human | |
| Hinweis-IHC: Antigenmaskierung mit TE- Puffer pH 9,0 empfohlen. (*) Wahlweise kann die Antigenmaskierung auch mit Citratpuffer pH 6,0 erfolgen. | |

Hintergrundinformationen

Structural maintenance of chromosomes protein 1A (SMC1A) is involved in chromosome cohesion during cell cycle and in DNA repair. It is a central component of cohesin complex which is required for the cohesion of sister chromatids after DNA replication. The cohesin complex apparently forms a large proteinaceous ring within which sister chromatids can be trapped. At anaphase, the complex is cleaved and dissociates from chromatin, allowing sister chromatids to segregate. The cohesin complex may also play a role in spindle pole assembly during mitosis. Involved in DNA repair via its interaction with BRCA1 and its related phosphorylation by ATM, or via its phosphorylation by ATR. Works as a downstream effector both in the ATM/NBS1 branch and in the ATR/MSH2 branch of S-phase checkpoint.

Bemerkenswerte Veröffentlichungen

| Verfasser | Pubmed ID | Journal | Anwendung |
|------------|-----------|----------|-----------|
| Jiayan Fan | 31451355 | Mol Ther | WB |

Lagerung

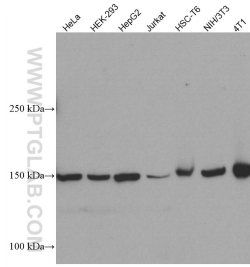
Lagerungsbedingungen:
Bei -20°C lagern. Nach dem Versand ein Jahr lang stabil
Lagerungspuffer:
PBS mit 0.02% Natriumazid und 50% Glycerin pH 7.3.
Aliquotieren ist nicht notwendig bei -20°C Lagerung

***** 20ul-Größen enthalten 0.1% BSA**

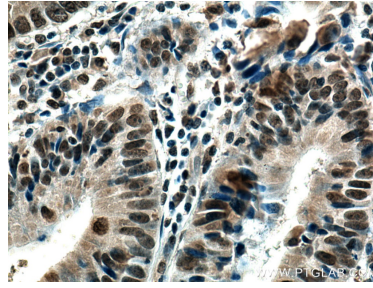
For technical support and original validation data for this product please contact:
T: 1 (888) 4PTGLAB (1-888-478-4522) (toll free in USA), or 1(312) 455-8498 (outside USA)
E: proteintech@ptglab.com
W: ptglab.com

This product is exclusively available under Proteintech Group brand and is not available to purchase from any other manufacturer.

Ausgewählte Validierungsdaten



Various lysates were subjected to SDS PAGE followed by western blot with 66987-1-Ig (SMC1A antibody) at dilution of 1:3000 incubated at room temperature for 1.5 hours.



Immunohistochemical analysis of paraffin-embedded human colon cancer tissue slide using 66987-1-Ig (SMC1A antibody) at dilution of 1:300 (under 40x lens). Heat mediated antigen retrieval with Tris-EDTA buffer (pH 9.0).