

Allgemeine Informationen

Katalog-Nr.: 66995-1-Ig	GenBank-Zugangsnummer: BC011655	Reinigungsmethode: Protein-A-Reinigung
Größe: 150ul , Konzentration: 2300 µg/ml von1487 Nanodrop und 1000 µg/ml durch die Bradford-Methode mit BSA als Standard;	GeneID (NCBI): 1487	CloneNo.: 1C4B2
Wirt: Maus	Vollständiger Name: C-terminal binding protein 1	Empfohlene Verdünnungen: WB 1:5000-1:50000 IHC 1:1000-1:4000 IF 1:2000-1:8000
Isotyp: IgG1	Berechnete Masse: 48 kDa	
Immunogen Katalognummer: AG28567	Beobachtete Masse: 45-48 kDa	

Anwendungen

Geprüfte Anwendungen:

FC, IF, IHC, WB, ELISA

Getestete Reaktivität:

Human, Maus, Ratte

Hinweis-IHC: Antigendemaskierung mit TE-Puffer pH 9,0 empfohlen. (*) Wahlweise kann die Antigendemaskierung auch mit Citratpuffer pH 6,0 erfolgen.

Positivkontrollen:

WB : MCF-7-Zellen, 4T1-Zellen, A549-Zellen, HEK-293-Zellen, HeLa-Zellen, HL-60-Zellen, Jurkat-Zellen, LNCaP-Zellen, NCCIT-Zellen, NIH/3T3-Zellen, RAW 264.7-Zellen

IHC : humanes Mammakarzinomgewebe, humanes Prostatakarzinomgewebe

IF : HepG2-Zellen,

Hintergrundinformationen

CTBP1, also named as C-terminal-binding protein 1, is a 440 amino acid protein, which belongs to the D-isomer specific 2-hydroxyacid dehydrogenase family. CTBP1 is a cellular phosphoprotein that associates with various proteins and functions as a corepressor of transcription. CTBP1 and the related protein CTBP2 are characterized as C-terminal binding protein of adenovirus E1A, and they preferentially associate with the E1A via a 5-amino acid motif, PLDLS, to repress E1A induced oncogenesis and cellular transformation. CTBP1 is expressed from embryo to adult, but CTBP2 is mainly expressed during embryogenesis.

Lagerung

Lagerungsbedingungen:

Bei -20°C lagern. Nach dem Versand ein Jahr lang stabil

Lagerungspuffer:

PBS mit 0.02% Natriumazid und 50% Glycerin pH 7.3.

Aliquotieren ist nicht notwendig bei -20°C Lagerung

*** 20ul-Größen enthalten 0.1% BSA

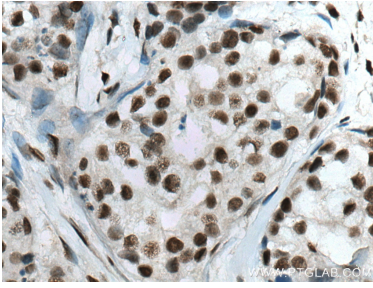
For technical support and original validation data for this product please contact:

T: 1 (888) 4PTGLAB (1-888-478-4522) (toll free in USA), or 1(312) 455-8498 (outside USA)

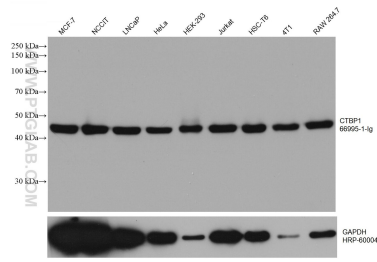
E: proteintech@ptglab.com
W: ptglab.com

This product is exclusively available under Proteintech Group brand and is not available to purchase from any other manufacturer.

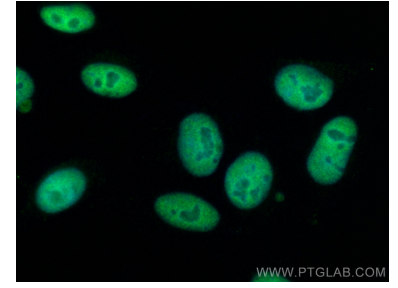
Ausgewählte Validierungsdaten



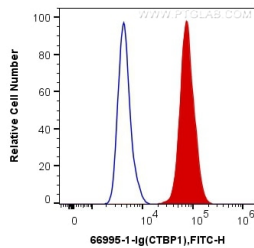
Immunohistochemical analysis of paraffin-embedded human breast cancer tissue slide using 66995-1-Ig (CTBP1 antibody) at dilution of 1:2000 (under 40x lens). Heat mediated antigen retrieval with Tris-EDTA buffer (pH 9.0).



Various lysates were subjected to SDS PAGE followed by western blot with 66995-1-Ig (CTBP1 antibody) at dilution of 1:20000 incubated at room temperature for 1.5 hours. The membrane was stripped and reblotted with HRP-conjugated GAPDH Monoclonal antibody (HRP-60004) as loading control.



Immunofluorescent analysis of (4% PFA) fixed HepG2 cells using CTBP1 antibody (66995-1-Ig, Clone: 1C4B2) at dilution of 1:4000 and CoraLite®488-Conjugated AffiniPure Goat Anti-Mouse IgG(H+L).



1X10⁶ HepG2 cells were intracellularly stained with 0.2 ug Anti-Human CTBP1 (66995-1-Ig, Clone:1C4B2) and CoraLite®488-Conjugated AffiniPure Goat Anti-Mouse IgG(H+L) at dilution 1:1000 (red), or 0.2 ug Mouse IgG1 Isotype Control (66360-1-Ig, Clone: T1F8D3F10) (blue). Cells were fixed and permeabilized with Transcription Factor Staining Buffer Kit (PF00011).