

Nur für Forschungszwecke

Endothelin 1 Monoklonaler Antikörper



Katalog-Nr.: 67008-1-Ig **2 Publikationen**

Allgemeine Informationen

Katalog-Nr.: 67008-1-Ig	GenBank-Zugangsnummer: BC009720	Reinigungsmethode: Protein-G-Reinigung
Größe: 150ul, Konzentration: 1000 µg/ml durch die Bradford-Methode mit BSA als Standard;	GeneID (NCBI): 1906	CloneNo.: 2C5B3
Wirt: Maus	Vollständiger Name: endothelin 1	Empfohlene Verdünnungen: WB 1:1000-1:4000
Isotyp: IgG1	Berechnete Masse: 212 aa, 24 kDa	
Immunogen Katalognummer: AG28334	Beobachtete Masse: 24 kDa	

Anwendungen

Geprüfte Anwendungen: FC, WB, ELISA	Positivkontrollen: WB : humanes Plazenta-Gewebe,
In Publikationen genannte Anwendungen: WB	
Getestete Reaktivität: Human	
Zitierte Arten: Human	

Hintergrundinformationen

EDN1, also named as Endothelin-1, PPET1 and ET-1, belongs to the endothelin/sarafotoxin family. Endothelins are endothelium-derived vasoconstrictor peptides. Emerging basic science, and animal and human data all suggest that EDN1 is a potentially important contributor in the pathobiology of fibrosing disorders, including those that affect the lung (PMID:2005532).

Bemerkenswerte Veröffentlichungen

Verfasser	Pubmed ID	Journal	Anwendung
Ying Xue	35950100	Biomed Rep	WB
Zheng Wang	37188751	Hypertens Res	WB

Lagerung

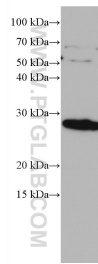
Lagerungsbedingungen:
Bei -20°C lagern.
Lagerungspuffer:
PBS mit 0.02% Natriumazid und 50% Glycerin pH 7.3.
Aliquotieren ist nicht notwendig bei -20°C Lagerung

***** 20ul-Größen enthalten 0.1% BSA**

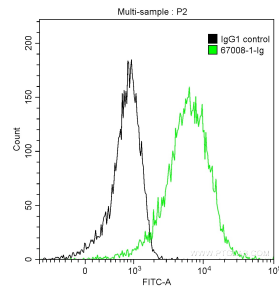
For technical support and original validation data for this product please contact:
T: 1 (888) 4PTGLAB (1-888-478-4522) (toll free in USA), or 1(312) 455-8498 (outside USA)
E: proteintech@ptglab.com
W: ptglab.com

This product is exclusively available under Proteintech Group brand and is not available to purchase from any other manufacturer.

Ausgewählte Validierungsdaten



human placenta tissue were subjected to SDS PAGE followed by western blot with 67008-1-Ig (EDN1 antibody) at dilution of 1:2000 incubated at room temperature for 1.5 hours.



1X10⁶ HEK-293T cells were intracellularly stained with 0.2 ug Anti-Human Endothelin 1 (67008-1-Ig, Clone:2C5B3) and CoraLite®488-Conjugated AffiniPure Goat Anti-Mouse IgG(H+L) at dilution 1:1000 (green), and 0.2 ug Mouse IgG1 Isotype Control (66360-1-Ig, Clone: T1F8D3F10) (black). Cells were fixed with 4% PFA and permeabilized with 0.1% TritonX-100.