

Nur für Forschungszwecke

# RASGRF1 Monoklonaler Antikörper

Katalog-Nr.:67010-1-Ig



## Allgemeine Informationen

|  |   |   |
|--|---|---|
| <b>Katalog-Nr.:</b><br>67010-1-Ig  | <b>GenBank-Zugangsnummer:</b><br>BC040275   | <b>Reinigungsmethode:</b><br>Protein-G-Reinigung    |
| <b>Größe:</b><br>150ul , Konzentration: 2500 µg/ml von5923<br>Nanodrop und 1000 µg/ml durch die<br>Bradford-Methode mit BSA als<br>Standard; | <b>GeneID (NCBI):</b><br>5923   | <b>CloneNo.:</b><br>1A4D4                           |
| <b>Wirt:</b><br>Maus   | <b>Vollständiger Name:</b><br>Ras protein-specific guanine<br>nucleotide-releasing factor 1 | <b>Empfohlene Verdünnungen:</b><br>WB 1:1000-1:6000 |
| <b>Isotyp:</b><br>IgG1   | <b>Berechnete Masse:</b><br>134 kDa   |   |
| <b>Immunogen Katalognummer:</b><br>AG6937  | <b>Beobachtete Masse:</b><br>145 kDa  |   |

## Anwendungen

|  |  |
|--|--|
| <b>Geprüfte Anwendungen:</b><br>WB,ELISA                   | <b>Positivkontrollen:</b><br>WB : Hausschwein-Cerebellum-Gewebe, Hausschwein-<br>Hirngewebe, Ratten-Cerebellum-Gewebe,<br>Rattenhirngewebe |
| <b>Getestete Reaktivität:</b><br>Hausschwein, Human, Ratte |  |

## Hintergrundinformationen

RasGRF1, a member of calmodulin-activated guanine-nucleotide exchange factors (GEFs), highly expressed at the synaptic junctions of the central nervous system (CNS). It is similar to the *Saccharomyces cerevisiae* CDC25. RASGRF1 serves as an in vivo activator for H-RAS and members of the R-RAS and RAC subfamilies. Several studies have shown that RasGRF1 also binds to microtubules and participate in the regulation of neurite outgrowth. RasGRF1 has been implicated in neuronal excitability. The studies of the similar gene in mouse suggested that the Ras-GEF activity of this protein in brain can be activated by Ca<sup>2+</sup> influx, muscarinic receptors, and G protein beta-gamma subunit. Mouse studies also indicated that the Ras-GEF signaling pathway mediated by this protein may be important for long-term memory.

## Lagerung

**Lagerungsbedingungen:**  
Bei -20°C lagern.  
**Lagerungspuffer:**  
PBS mit 0.02% Natriumazid und 50% Glycerin pH 7.3.  
Aliquotieren ist nicht notwendig bei -20°C Lagerung

\*\*\* 20ul-Größen enthalten 0.1% BSA

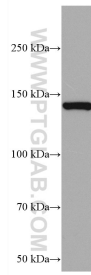
For technical support and original validation data for this product please contact:

T: 1 (888) 4PTGLAB (1-888-478-4522) (toll free  
in USA), or 1(312) 455-8498 (outside USA)

E: proteintech@ptglab.com  
W: ptglab.com

This product is exclusively available under Proteintech Group brand and is not available to purchase from any other manufacturer.

## Ausgewählte Validierungsdaten



pig cerebellum tissue were subjected to SDS PAGE followed by western blot with 67010-1-Ig (RASGRF 1 antibody) at dilution of 1:3000 incubated at room temperature for 1.5 hours.