

## Allgemeine Informationen

<b>Katalog-Nr.:</b> 67011-1-Ig	<b>GenBank-Zugangsnummer:</b> BC007565	<b>Reinigungsmethode:</b> Protein-G-Reinigung
<b>Größe:</b> 150ul , Konzentration: 1900 µg/ml von5336 Nanodrop und 1000 µg/ml durch die Bradford-Methode mit BSA als Standard;	<b>GeneID (NCBI):</b> Vollständiger Name: phospholipase C, gamma 2 (phosphatidylinositol-specific)	<b>CloneNo.:</b> 2F8H5 <b>Empfohlene Verdünnungen:</b> WB 1:1000-1:4000 IHC 1:50-1:500
<b>Wirt:</b> Maus	<b>Berechnete Masse:</b> 148 kDa	
<b>Isotyp:</b> IgG1	<b>Beobachtete Masse:</b> 148 kDa	
<b>Immunogen Katalognummer:</b> AG24355		

## Anwendungen

<b>Geprüfte Anwendungen:</b> IHC, WB,ELISA	<b>Positivkontrollen:</b> WB : Ramos-Zellen, Daudi-Zellen, Raji-Zellen IHC : humanes Tonsillitisgewebe,
<b>Getestete Reaktivität:</b> Human	
<b>Hinweis-IHC: Antigendemaskierung mit TE-Puffer pH 9,0 empfohlen. (*) Wahlweise kann die Antigendemaskierung auch mit Citratpuffer pH 6,0 erfolgen.</b>	

## Hintergrundinformationen

Phospholipase C-gamma2 (PLCG2) is a transmembrane signaling enzyme that catalyzes the conversion of 1-phosphatidyl-1D-myo-inositol 4,5-bisphosphate to 1D-myo-inositol 1,4,5-trisphosphate (IP3) and diacylglycerol (DAG) using calcium as a cofactor. IP3 and DAG are second messenger molecules important for transmitting signals from growth factor receptors and immune system receptors across the cell membrane. Mutations in this gene have been found in autoinflammation, antibody deficiency, and immune dysregulation syndrome and familial cold autoinflammatory syndrome 3.

## Lagerung

**Lagerungsbedingungen:**  
Bei -20°C lagern.  
**Lagerungspuffer:**  
PBS mit 0.02% Natriumazid und 50% Glycerin pH 7.3.  
**Aliquotieren ist nicht notwendig bei -20°C Lagerung**

**\*\*\* 20ul-Größen enthalten 0.1% BSA**

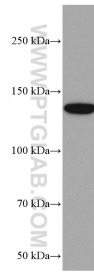
For technical support and original validation data for this product please contact:

T: 1 (888) 4PTGLAB (1-888-478-4522) (toll free  
in USA), or 1(312) 455-8498 (outside USA)

E: [proteintech@ptglab.com](mailto:proteintech@ptglab.com)  
W: [ptglab.com](http://ptglab.com)

**This product is exclusively available under Proteintech Group brand and is not available to purchase from any other manufacturer.**

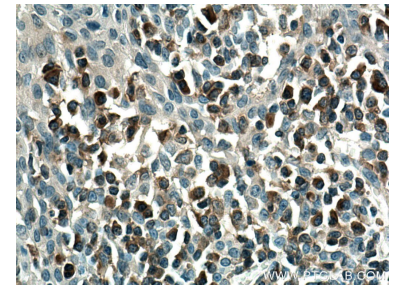
## Ausgewählte Validierungsdaten



Ramos cells were subjected to SDS PAGE followed by western blot with 67011-1-Ig (PLCG2 antibody) at dilution of 1:2000 incubated at room temperature for 1.5 hours.



Immunohistochemical analysis of paraffin-embedded human tonsillitis tissue slide using 67011-1-Ig (PLCG2 antibody) at dilution of 1:200 (under 10x lens). Heat mediated antigen retrieval with Tris-EDTA buffer (pH 9.0).



Immunohistochemical analysis of paraffin-embedded human tonsillitis tissue slide using 67011-1-Ig (PLCG2 antibody) at dilution of 1:200 (under 40x lens). Heat mediated antigen retrieval with Tris-EDTA buffer (pH 9.0).