

Nur für Forschungszwecke

MAP2 Monoklonaler Antikörper

Katalog-Nr.: 67015-1-Ig **12 Publikationen**



Allgemeine Informationen

Katalog-Nr.: 67015-1-Ig	GenBank-Zugangsnummer: BC038857	Reinigungsmethode: Protein-A-Reinigung
Größe: 150ul, Konzentration: 1700 µg/ml von 4133 Nanodrop und 1000 µg/ml durch die Bradford-Methode mit BSA als Standard;	GeneID (NCBI): 150000	CloneNo.: 1C3E6
Wirt: Maus	Vollständiger Name: microtubule-associated protein 2	Empfohlene Verdünnungen: IHC 1:1000-1:4000 IF 1:200-1:800
Isotyp: IgG2b	Berechnete Masse: 200 kDa	
Immunogen Katalognummer: AG11349		

Anwendungen

Geprüfte Anwendungen: FC, IF, IHC, ELISA	Positivkontrollen: IHC: Maushirngewebe, humanes Hirngewebe, Maus-Cerebellum-Gewebe, Ratten-Cerebellum-Gewebe IF: Rattenhirngewebe,
In Publikationen genannte Anwendungen: IF, IP, WB	
Getestete Reaktivität: Human, Maus, Ratte	
Zitierte Arten: Maus, Ratte	
Hinweis-IHC: Antigenmaskierung mit TE-Puffer pH 9,0 empfohlen. (*) Wahlweise kann die Antigenmaskierung auch mit Citratpuffer pH 6,0 erfolgen.	

Hintergrundinformationen

MAP2 (microtubule-associated protein 2) is a cytoskeleton protein abundant in brain and has important role in neuronal morphogenesis. Multiple high molecular weight (MW) and low molecular weight (MW) MAP2 isoforms are expressed within axons, dendrites, and cell bodies. The expression of MAP2 is regulated in both a tissue- and developmentally specific manner. MAP2 antibodies have been widely used to mark the neuron or dendrite formation.

Bemerkenswerte Veröffentlichungen

Verfasser	Pubmed ID	Journal	Anwendung
Lei-Lei Wang	34582787	Cell	IF
Zihu Tan	34025340	Front Neurosci	IF
Tuancheng Feng	35287730	Acta Neuropathol Commun	IF

Lagerung

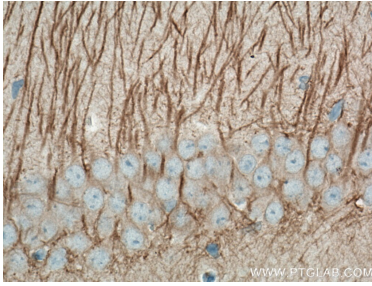
Lagerungsbedingungen:
Bei -20°C lagern. Nach dem Versand ein Jahr lang stabil
Lagerungspuffer:
PBS mit 0.02% Natriumazid und 50% Glycerin pH 7.3.
Aliquotieren ist nicht notwendig bei -20°C Lagerung

***** 20ul-Größen enthalten 0.1% BSA**

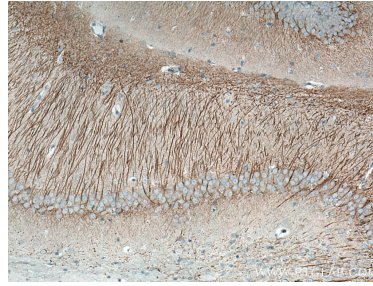
For technical support and original validation data for this product please contact:
T: 1 (888) 4PTGLAB (1-888-478-4522) (toll free in USA), or 1(312) 455-8498 (outside USA)
E: proteintech@ptglab.com
W: ptglab.com

This product is exclusively available under Proteintech Group brand and is not available to purchase from any other manufacturer.

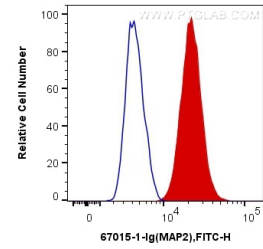
Ausgewählte Validierungsdaten



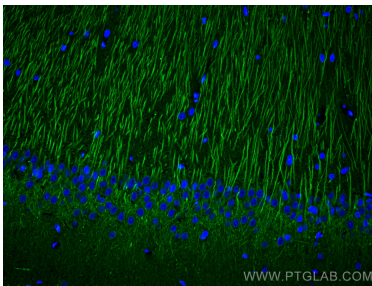
Immunohistochemical analysis of paraffin-embedded mouse brain tissue slide using 67015-1-Ig (MAP2 antibody) at dilution of 1:2000 (under 40x lens). Heat mediated antigen retrieval with Tris-EDTA buffer (pH 9.0).



Immunohistochemical analysis of paraffin-embedded mouse brain tissue slide using 67015-1-Ig (MAP2 antibody) at dilution of 1:2000 (under 10x lens). Heat mediated antigen retrieval with Tris-EDTA buffer (pH 9.0).



1×10^6 SH-SY5Y cells were intracellularly stained with 0.2 μ g Anti-Human MAP2 (67015-1-Ig, Clone:1C3E6) and CoraLite[®]488-Conjugated AffiniPure Goat Anti-Mouse IgG(H+L) at dilution 1:1000 (red), or 0.2 μ g Control Antibody. Cells were fixed with 4% PFA and permeabilized with Flow Cytometry Perm Buffer (PF00011-C).



Immunofluorescent analysis of (4% PFA) fixed rat brain tissue using MAP2 antibody (67015-1-Ig, Clone: 1C3E6) at dilution of 1:400 and CoraLite[®]488-Conjugated AffiniPure Goat Anti-Mouse IgG(H+L).