

## Allgemeine Informationen

<b>Katalog-Nr.:</b> 67026-1-Ig	<b>GenBank-Zugangsnummer:</b> BC040132	<b>Reinigungsmethode:</b> Protein-A-Reinigung
<b>Größe:</b> 150ul , Konzentration: 2000 µg/ml von2746 Nanodrop und 1000 µg/ml durch die Bradford-Methode mit BSA als Standard;	<b>GeneID (NCBI):</b> 4G10D3	<b>CloneNo.:</b> 4G10D3
<b>Wirt:</b> Maus	<b>Vollständiger Name:</b> glutamate dehydrogenase 1	<b>Empfohlene Verdünnungen:</b> WB 1:5000-1:50000 IHC 1:500-1:2000 IF 1:200-1:800
<b>Isotyp:</b> IgG2b	<b>Berechnete Masse:</b> 61 kDa	
<b>Immunogen Katalognummer:</b> AG6179	<b>Beobachtete Masse:</b> 45-55 kDa	

## Anwendungen

### Geprüfte Anwendungen:

IF, IHC, WB,ELISA

### Getestete Reaktivität:

Human, Maus, Ratte

**Hinweis-IHC: Antigendemaskierung mit TE-Puffer pH 9,0 empfohlen. (\*) Wahlweise kann die Antigendemaskierung auch mit Citratpuffer pH 6,0 erfolgen.**

### Positivkontrollen:

**WB** : HeLa-Zellen, HepG2-Zellen, HuH-7-Zellen, L02-Zellen, NIH/3T3-Zellen

**IHC** : humanes Leberkarzinomgewebe, humanes Mammakarzinomgewebe

**IF** : humanes Leberkarzinomgewebe,

## Hintergrundinformationen

Human glutamate dehydrogenase (GDH), an enzyme central to the metabolism of glutamate, is known to exist in housekeeping and nerve tissue-specific isoforms encoded by the GLUD1 and GLUD2 genes, respectively. It catalyses the reversible inter-conversion of glutamate to alpha-ketoglutarate and ammonia, thus interconnecting amino acid and carbohydrate metabolism. GLUD1 might contribute to the formation of specific synapses in the hippocampus such as those formed by the projecting neurons of the entorhinal cortex(PMID: 22138648). GLUD1 has a calculated molecular mass of 61 kDa and an apparent molecular mass of 45-55 kDa with the 53aa transit peptide removed.

## Lagerung

### Lagerungsbedingungen:

Bei -20°C lagern.

### Lagerungspuffer:

PBS mit 0.02% Natriumazid und 50% Glycerin pH 7.3.

Aliquotieren ist nicht notwendig bei -20°C Lagerung

\*\*\* 20ul-Größen enthalten 0.1% BSA

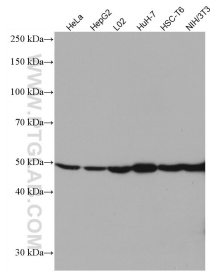
For technical support and original validation data for this product please contact:

T: 1 (888) 4PTGLAB (1-888-478-4522) (toll free in USA), or 1(312) 455-8498 (outside USA)

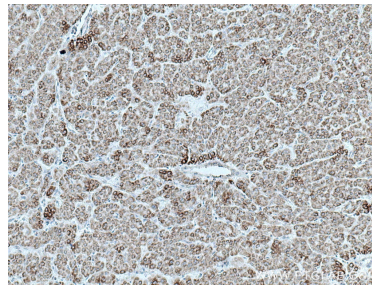
E: proteintech@ptglab.com  
W: ptglab.com

This product is exclusively available under Proteintech Group brand and is not available to purchase from any other manufacturer.

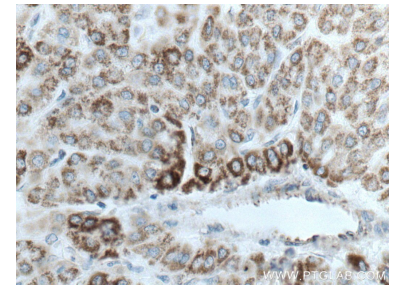
## Ausgewählte Validierungsdaten



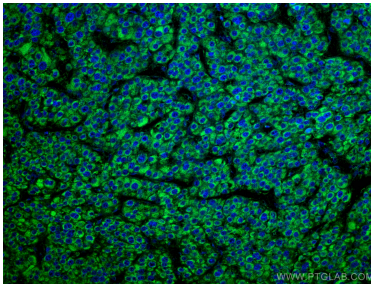
Various lysates were subjected to SDS PAGE followed by western blot with 67026-1-Ig (GLUD1 antibody) at dilution of 1:20000 incubated at room temperature for 1.5 hours.



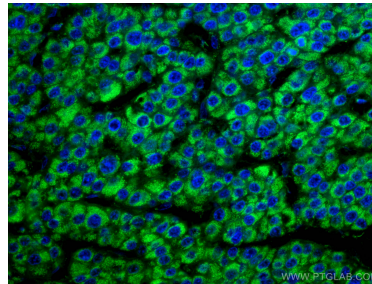
Immunohistochemical analysis of paraffin-embedded human liver cancer tissue slide using 67026-1-Ig (GLUD1 antibody) at dilution of 1:1000 (under 10x lens) proteolytic pre-treatment mediated antigen retrieved with Tris-EDTA buffer (pH9).



Immunohistochemical analysis of paraffin-embedded human liver cancer tissue slide using 67026-1-Ig (GLUD1 antibody) at dilution of 1:1000 (under 40x lens) proteolytic pre-treatment mediated antigen retrieved with Tris-EDTA buffer (pH9).



Immunofluorescent analysis of (4% PFA) fixed human liver cancer tissue using GLUD1 antibody (67026-1-Ig, Clone: 4G10D3) at dilution of 1:400 and CoraLite®488-Conjugated AffiniPure Goat Anti-Mouse IgG(H+L).



Immunofluorescent analysis of (4% PFA) fixed human liver cancer tissue using GLUD1 antibody (67026-1-Ig, Clone: 4G10D3) at dilution of 1:400 and CoraLite®488-Conjugated AffiniPure Goat Anti-Mouse IgG(H+L).