

## Allgemeine Informationen

<b>Katalog-Nr.:</b> 67027-1-Ig	<b>GenBank-Zugangsnummer:</b> BC003138	<b>Reinigungsmethode:</b> Protein-A-Reinigung
<b>Größe:</b> 150ul , Konzentration: 2300 µg/ml von9055 Nanodrop und 1000 µg/ml durch die Bradford-Methode mit BSA als Standard;	<b>GeneID (NCBI):</b> 15055	<b>CloneNo.:</b> 1E1D5
<b>Wirt:</b> Maus	<b>Vollständiger Name:</b> protein regulator of cytokinesis 1	<b>Empfohlene Verdünnungen:</b> WB 1:2000-1:10000 IHC 1:200-1:1000
<b>Isotyp:</b> IgG1	<b>Berechnete Masse:</b> 72 kDa	
<b>Immunogen Katalognummer:</b> AG5907	<b>Beobachtete Masse:</b> 66-72 kDa	

## Anwendungen

### Geprüfte Anwendungen:

IHC, WB, ELISA

### Getestete Reaktivität:

Human, Maus, Ratte

**Hinweis-IHC: Antigenmaskierung mit TE-Puffer pH 9,0 empfohlen. (\*) Wahlweise kann die Antigenmaskierung auch mit Citratpuffer pH 6,0 erfolgen.**

### Positivkontrollen:

**WB :** HeLa-Zellen, 4T1-Zellen, A549-Zellen, HEK-293-Zellen, HepG2-Zellen, MCF-7-Zellen

**IHC :** humanes Mammakarzinomgewebe, humanes Lungenkarzinomgewebe

## Hintergrundinformationen

PRC1 (protein regulator of cytokinesis 1) is a microtubule-bundling protein that is involved in cytokinesis. Depletion of PRC1 leads to failed cytokinesis. PRC1 is located in the nucleus during interphase, and becomes associated with mitotic spindles in a highly dynamic manner during mitosis, and localizes to the cell mid-body during cytokinesis. PRC1 is a substrate of CDK1 and it was assumed that CDK1 phosphorylation blocks its activity during metaphase. Three isoforms of PRC1 exist due to the alternative splicing, with predictive molecular weight of 71.6 kDa, 70.2 kDa and 66.2 kDa, respectively. The dual bands between 66-72 kDa detected by this antibody may represent different forms of PRC1.

## Lagerung

### Lagerungsbedingungen:

Bei -20°C lagern. Nach dem Versand ein Jahr lang stabil

### Lagerungspuffer:

PBS mit 0.02% Natriumazid und 50% Glycerin pH 7.3.

Aliquotieren ist nicht notwendig bei -20°C Lagerung

\*\*\* 20ul-Größen enthalten 0.1% BSA

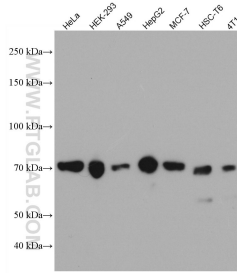
For technical support and original validation data for this product please contact:

T: 1 (888) 4PTGLAB (1-888-478-4522) (toll free in USA), or 1(312) 455-8498 (outside USA)

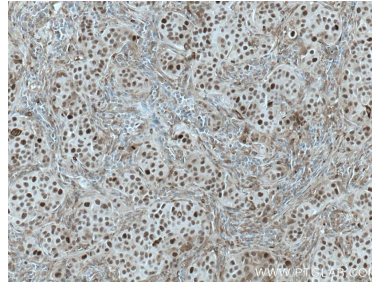
E: proteintech@ptglab.com  
W: ptglab.com

This product is exclusively available under Proteintech Group brand and is not available to purchase from any other manufacturer.

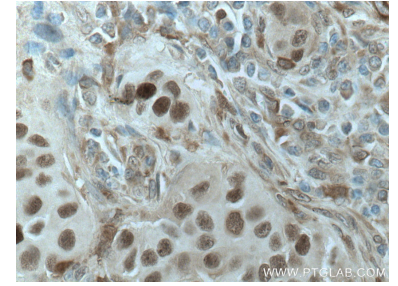
## Ausgewählte Validierungsdaten



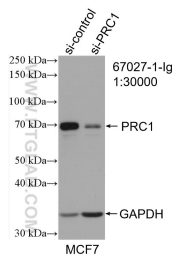
Various lysates were subjected to SDS PAGE followed by western blot with 67027-1-Ig (PRC1 antibody) at dilution of 1:5000 incubated at room temperature for 1.5 hours.



Immunohistochemical analysis of paraffin-embedded human breast cancer tissue slide using 67027-1-Ig (PRC1 antibody) at dilution of 1:500 (under 10x lens. Heat mediated antigen retrieval with Tris-EDTA buffer (pH 9.0).



Immunohistochemical analysis of paraffin-embedded human breast cancer tissue slide using 67027-1-Ig (PRC1 antibody) at dilution of 1:500 (under 40x lens. Heat mediated antigen retrieval with Tris-EDTA buffer (pH 9.0).



WB result of PRC1 antibody (67027-1-Ig; 1:30000; incubated at room temperature for 1.5 hours) with sh-Control and sh-PRC1 transfected MCF-7 cells.