

Nur für Forschungszwecke

# CRK Monoklonaler Antikörper

Katalog-Nr.:67035-1-Ig



## Allgemeine Informationen

<b>Katalog-Nr.:</b> 67035-1-Ig	<b>GenBank-Zugangsnummer:</b> BC008506	<b>Reinigungsmethode:</b> Protein-G-Reinigung
<b>Größe:</b> 150ul , Konzentration: 1600 µg/ml von1398 Nanodrop und 1000 µg/ml durch die Bradford-Methode mit BSA als Standard;	<b>GeneID (NCBI):</b> v-crkl sarcoma virus CT10 oncogene homolog (avian)	<b>CloneNo.:</b> 2B7E1
<b>Wirt:</b> Maus	<b>Berechnete Masse:</b> 34 kDa	<b>Empfohlene Verdünnungen:</b> WB 1:1000-1:6000
<b>Isotyp:</b> IgG1	<b>Beobachtete Masse:</b> 34 kDa	
<b>Immunogen Katalognummer:</b> AG28793		

## Anwendungen

<b>Geprüfte Anwendungen:</b> WB,ELISA	<b>Positivkontrollen:</b> WB : HEK-293-Zellen, HeLa-Zellen, Jurkat-Zellen, NIH/3T3-Zellen, RAW 264.7-Zellen
<b>Getestete Reaktivität:</b> Human, Maus, Ratte	

## Hintergrundinformationen

CRK is a member of an adapter protein family that binds to several tyrosine-phosphorylated proteins. CRK has several SH2 and SH3 domains (src-homology domains) and is involved in several signaling pathways, recruiting cytoplasmic proteins in the vicinity of tyrosine kinase through SH2-phosphotyrosine interaction. The N-terminal SH2 domain of this protein functions as a positive regulator of transformation whereas the C-terminal SH3 domain functions as a negative regulator of transformation.

## Lagerung

**Lagerungsbedingungen:**  
Bei -20°C lagern.  
**Lagerungspuffer:**  
PBS mit 0.02% Natriumazid und 50% Glycerin pH 7.3.  
Aliquotieren ist nicht notwendig bei -20°C Lagerung

**\*\*\* 20ul-Größen enthalten 0.1% BSA**

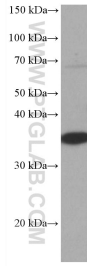
For technical support and original validation data for this product please contact:

T: 1 (888) 4PTGLAB (1-888-478-4522) (toll free  
in USA), or 1(312) 455-8498 (outside USA)

E: [proteintech@ptglab.com](mailto:proteintech@ptglab.com)  
W: [ptglab.com](http://ptglab.com)

**This product is exclusively available under Proteintech Group brand and is not available to purchase from any other manufacturer.**

## Ausgewählte Validierungsdaten



HEK-293 cells were subjected to SDS PAGE followed by western blot with 67035-1-Ig (CRK antibody) at dilution of 1:3000 incubated at room temperature for 1.5 hours.