

Allgemeine Informationen

Katalog-Nr.: 67039-1-Ig	GenBank-Zugangsnummer: BC025300	Reinigungsmethode: Protein-A-Reinigung
Größe: 150ul , Konzentration: 1900 µg/ml von2314 Nanodrop und 1000 µg/ml durch die Bradford-Methode mit BSA als Standard;	GeneID (NCBI): 2314	CloneNo.: 2F9C8
Wirt: Maus	Vollständiger Name: flightless I homolog (Drosophila)	Empfohlene Verdünnungen: WB 1:5000-1:20000 IHC 1:1000-1:4000
Isotyp: IgG2a	Berechnete Masse: 1269 aa, 145 kDa	
Immunogen Katalognummer: AG26865	Beobachtete Masse: 145-150 kDa	

Anwendungen

Geprüfte Anwendungen: IHC, WB, ELISA	Positivkontrollen:
In Publikationen genannte Anwendungen: WB	WB : HeLa-Zellen, A549-Zellen, HEK-293-Zellen, HepG2-Zellen, HT-1080.Zellen, Jurkat-Zellen, LNCaP-Zellen, MCF-7-Zellen, NCCIT-Zellen, NCI-H1299-Zellen, NIH/3T3-Zellen
Getestete Reaktivität: Human, Maus, Ratte	IHC : humanes Kolonkarzinomgewebe, humanes Mammakarzinomgewebe
Zitierte Arten: Human	
Hinweis-IHC: Antigenmaskierung mit TE-Puffer pH 9,0 empfohlen. (*) Wahlweise kann die Antigenmaskierung auch mit Citratpuffer pH 6,0 erfolgen.	

Hintergrundinformationen

Flightless I (Flil) is the most evolutionarily conserved member of the gelsolin superfamily of proteins which are key regulators of actin filament assembly and turnover. Flil comprises an N-terminal leucine-rich repeat (LRR) domain which is not present in other gelsolin family members, and the LRR domain may enable interactions between Flil and other molecules involved in signal transduction, thereby spatially integrating signaling and actin remodeling functions. This protein was originally found in Drosophila and participates in the embryonic development, while mammalian Flil protein was involved in the regulation of wound repair, skin barrier development. Studies recently demonstrated that Flil protein associated with colorectal cancer, hepatocellular and prostate cancer (PMID:30091651; 28498392).

Bemerkenswerte Veröffentlichungen

Verfasser	Pubmed ID	Journal	Anwendung
Dou-Dou Li	32368399	Am J Cancer Res	WB
Megan L Norris	36859340	Genes Dev	WB

Lagerung

Lagerungsbedingungen:
Bei -20°C lagern.
Lagerungspuffer:
PBS mit 0.02% Natriumazid und 50% Glycerin pH 7.3.
Aliquotieren ist nicht notwendig bei -20°C Lagerung

***** 20ul-Größen enthalten 0.1% BSA**

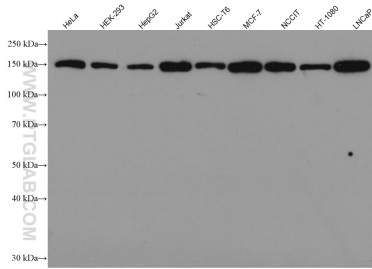
For technical support and original validation data for this product please contact:

T: 1 (888) 4PTGLAB (1-888-478-4522) (toll free in USA), or 1(312) 455-8498 (outside USA)

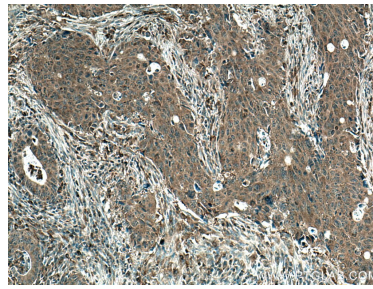
E: proteintech@ptglab.com
W: ptglab.com

This product is exclusively available under Proteintech Group brand and is not available to purchase from any other manufacturer.

Ausgewählte Validierungsdaten



Various lysates were subjected to SDS PAGE followed by western blot with 67039-1-Ig (FLII antibody) at dilution of 1:10000 incubated at room temperature for 1.5 hours.



Immunohistochemical analysis of paraffin-embedded human colon cancer tissue slide using 67039-1-Ig (FLII antibody) at dilution of 1:2000 (under 10x lens). Heat mediated antigen retrieval with Tris-EDTA buffer (pH 9.0).