

Allgemeine Informationen

Katalog-Nr.: 67041-1-Ig	GenBank-Zugangsnummer: BC015831	Reinigungsmethode: Protein-A-Reinigung
Größe: 150ul, Konzentration: 2100 µg/ml von 1776 Nanodrop und 1000 µg/ml durch die Bradford-Methode mit BSA als Standard;	GeneID (NCBI): 1776	CloneNo.: 1A4D4
Wirt: Maus	Vollständiger Name: deoxyribonuclease I-like 3	Empfohlene Verdünnungen: WB 1:500-1:2000 IHC 1:50-1:500
Isotyp: IgG2a	Berechnete Masse: 305 aa, 36 kDa	
Immunogen Katalognummer: AG28187	Beobachtete Masse: 33-38 kDa	

Anwendungen

Geprüfte Anwendungen: IHC, WB, ELISA	Positivkontrollen: WB: HEK-293-Zellen, Daudi-Zellen, HepG2-Zellen, Jurkat-Zellen, Raji-Zellen IHC: Mauslebergewebe, humanes Milzgewebe
In Publikationen genannte Anwendungen: WB	
Getestete Reaktivität: Human, Maus	
Zitierte Arten: Human	
Hinweis-IHC: Antigenmaskierung mit TE-Puffer pH 9,0 empfohlen. (*) Wahlweise kann die Antigenmaskierung auch mit Citratpuffer pH 6,0 erfolgen.	

Hintergrundinformationen

Deoxyribonuclease 1-like 3 (DNASE1L3, DNase gamma, DNase Y, LS-DNase) is member of a DNASE1 protein family that is identified by similar biochemical properties such as Ca²⁺/Mg²⁺-dependency and an optimal pH of about 7.0 as well as by a high similarity in their nucleic acid and amino acid sequences (PMID:157967140). It is an endonuclease and cleaves double-stranded DNA (and single-stranded DNA) producing 3'-OH/5'-P ends, which is Ca²⁺/Mg²⁺-dependent and inhibited by Zn²⁺, but not by monomeric actin (PMID:9665719). In addition, it translocates from the endoplasmic reticulum to the nucleus during apoptosis (PMID: 23229555). DNASE1L3 can be located either in the cytoplasm or in the nucleus.

Bemerkenswerte Veröffentlichungen

Verfasser	Pubmed ID	Journal	Anwendung
Jing Liu	34157681	Aging (Albany NY)	WB

Lagerung

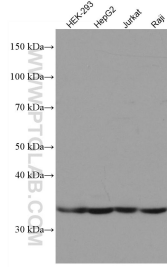
Lagerungsbedingungen:
Bei -20°C lagern.
Lagerungspuffer:
PBS mit 0.02% Natriumazid und 50% Glycerin pH 7.3.
Aliquotieren ist nicht notwendig bei -20°C Lagerung

***** 20ul-Größen enthalten 0.1% BSA**

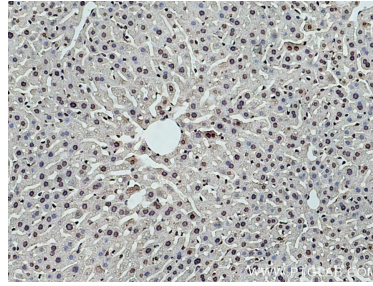
For technical support and original validation data for this product please contact:
 T: 1 (888) 4PTGLAB (1-888-478-4522) (toll free in USA), or 1(312) 455-8498 (outside USA)
 E: proteintech@ptglab.com
 W: ptglab.com

This product is exclusively available under Proteintech Group brand and is not available to purchase from any other manufacturer.

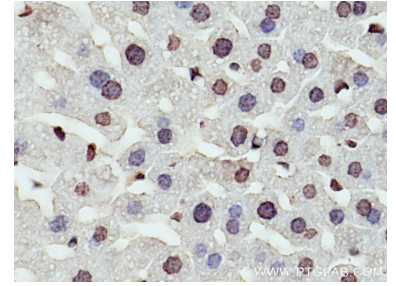
Ausgewählte Validierungsdaten



Various lysates were subjected to SDS PAGE followed by western blot with 67041-1-Ig (DNASE1L3 antibody) at dilution of 1:1000 incubated at room temperature for 1.5 hours.



Immunohistochemical analysis of paraffin-embedded mouse liver tissue slide using 67041-1-Ig (DNASE1L3 antibody) at dilution of 1:200 (under 10x lens). Heat mediated antigen retrieval with Tris-EDTA buffer (pH 9.0).



Immunohistochemical analysis of paraffin-embedded mouse liver tissue slide using 67041-1-Ig (DNASE1L3 antibody) at dilution of 1:200 (under 40x lens). Heat mediated antigen retrieval with Tris-EDTA buffer (pH 9.0).