

Allgemeine Informationen

Katalog-Nr.: 67043-1-Ig	GenBank-Zugangsnummer: BC003055	Reinigungsmethode: Protein-A-Reinigung
Größe: 150ul, Konzentration: 2200 µg/ml von 28991 Nanodrop und 1000 µg/ml durch die Bradford-Methode mit BSA als Standard;	GeneID (NCBI): von 28991	CloneNo.: 1E10G6
Wirt: Maus	Vollständiger Name: COMM domain containing 5	Empfohlene Verdünnungen: WB 1:2000-1:6000
Isotyp: IgG2a	Berechnete Masse: 25 kDa	
Immunogen Katalognummer: AG18464	Beobachtete Masse: 15 kDa	

Anwendungen

Geprüfte Anwendungen: WB, ELISA	Positivkontrollen: WB: humanes Herzgewebe, HEK-293-Zellen, MCF-7-Zellen, Rattenherzgewebe
In Publikationen genannte Anwendungen: WB	
Getestete Reaktivität: Human, Ratte	
Zitierte Arten: Human	

Hintergrundinformationen

COMM domain containing 5 (COMMD5, synonyms: HCARG, HT002) is a hypertension-related calcium-regulated gene. COMMD5 is negatively regulated by extracellular calcium concentration, and its basal mRNA levels were higher in hypertensive animals. Tissue distribution of COMMD5 shows a preponderance in the heart, stomach, jejunum, kidney (tubular fraction), liver, and adrenal gland (mainly in the medulla). COMMD5 mRNA is significantly more expressed in adult than in fetal organs, and its levels are decreased in tumors and cancerous cell lines. COMMD5 protein has no transmembrane domain, but contains 67% -helix content, a calcium-binding site, four putative "leucine zipper" motifs, and a nuclear receptor-binding domain. At the subcellular level, COMMD5 shows a nuclear localization.

Bemerkenswerte Veröffentlichungen

Verfasser	Pubmed ID	Journal	Anwendung
Michael D Healy	37172566	Cell	WB

Lagerung

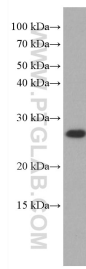
Lagerungsbedingungen:
Bei -20°C lagern.
Lagerungspuffer:
PBS mit 0.02% Natriumazid und 50% Glycerin pH 7.3.
Aliquotieren ist nicht notwendig bei -20°C Lagerung

*** 20ul-Größen enthalten 0.1% BSA

For technical support and original validation data for this product please contact:
 T: 1 (888) 4PTGLAB (1-888-478-4522) (toll free)
 in USA, or 1(312) 455-8498 (outside USA)
 E: proteintech@ptglab.com
 W: ptglab.com

This product is exclusively available under Proteintech Group brand and is not available to purchase from any other manufacturer.

Ausgewählte Validierungsdaten



human heart tissue were subjected to SDS PAGE followed by western blot with 67043-1-Ig (COMMD5 antibody) at dilution of 1:5000 incubated at room temperature for 1.5 hours.