

Nur für Forschungszwecke

ASK1 Monoklonaler Antikörper

Katalog-Nr.: 67072-1-Ig **7 Publikationen**



Allgemeine Informationen

Katalog-Nr.: 67072-1-Ig	GenBank-Zugangsnummer: BC054503	Reinigungsmethode: Protein-A-Reinigung
Größe: 150ul, Konzentration: 1200 µg/ml von 4217 Nanodrop und 1000 µg/ml durch die Bradford-Methode mit BSA als Standard;	GeneID (NCBI): 4217	CloneNo.: 1C3A10
Wirt: Maus	Vollständiger Name: mitogen-activated protein kinase kinase kinase 5	Empfohlene Verdünnungen: WB 1:1000-1:6000 IHC 1:150-1:600 IF 1:50-1:500
Isotyp: IgG1	Berechnete Masse: 155 kDa	
Immunogen Katalognummer: AG5818	Beobachtete Masse: 110 kDa	

Anwendungen

Geprüfte Anwendungen: IF, IHC, WB, ELISA	Positivkontrollen: WB: HSC-T6 cells, HEK-293-Zellen, HeLa-Zellen, Jurkat-Zellen, MCF-7-Zellen, NIH/3T3-Zellen IHC: humanes Pankreaskarzinomgewebe, humanes Lungenkarzinomgewebe, Mausherzgewebe IF: RAW 264.7-Zellen,
In Publikationen genannte Anwendungen: IF, WB	
Getestete Reaktivität: Human, Maus, Ratte	
Zitierte Arten: Human, Maus, Ratte	
Hinweis-IHC: Antigendemaskierung mit TE-Puffer pH 9,0 empfohlen. (*) Wahlweise kann die Antigendemaskierung auch mit Citratpuffer pH 6,0 erfolgen.	

Hintergrundinformationen

ASK1 (Apoptosis signal-regulating kinase 1) is also named as MAP3K5, MAPKKK5, MEKK5 and belongs to the MAP kinase kinase kinase subfamily. It is an evolutionarily conserved mitogen activated protein 3-kinase that activates both Jnk and p38 mitogen-activated protein kinases. ASK1 is activated in response to various cytotoxic stresses including TNF, Fas and reactive oxygen species (ROS) such as H₂O₂, and activates c-Jun NH 2-terminal kinase (JNK) and p38. 67072-1-Ig antibody detects the degraded product of ASK1 in SDS-PAGE.

Bemerkenswerte Veröffentlichungen

Verfasser	Pubmed ID	Journal	Anwendung
Xiao-Lin Jiang	36309912	Aging (Albany NY)	WB
Xiao-Lin Jiang	36465612	Front Endocrinol (Lausanne)	WB
Jiajia Duan	36633130	Mol Med Rep	IF

Lagerung

Lagerungsbedingungen:
Bei -20°C lagern.
Lagerungspuffer:
PBS mit 0.02% Natriumazid und 50% Glycerin pH 7.3.
Aliquotieren ist nicht notwendig bei -20°C Lagerung

***** 20ul-Größen enthalten 0.1% BSA**

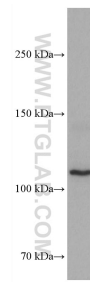
For technical support and original validation data for this product please contact:
T: 1 (888) 4PTGLAB (1-888-478-4522) (toll free in USA), or 1(312) 455-8498 (outside USA)
E: proteintech@ptglab.com
W: ptglab.com

This product is exclusively available under Proteintech Group brand and is not available to purchase from any other manufacturer.

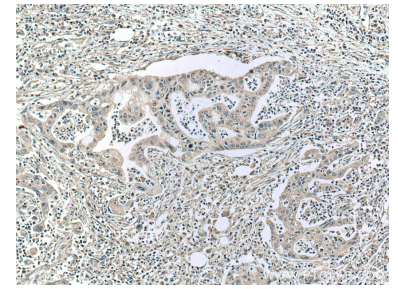
Ausgewählte Validierungsdaten



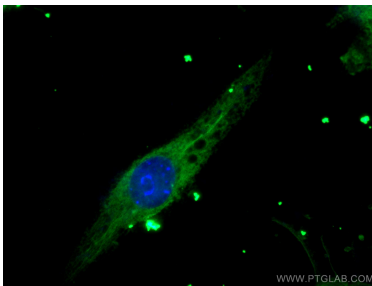
HEK-293 cells were subjected to SDS PAGE followed by western blot with 67072-1-Ig (ASK1 antibody) at dilution of 1:3000 incubated at room temperature for 1.5 hours.



HSC-T6 cells were subjected to SDS PAGE followed by western blot with 67072-1-Ig (ASK1 antibody) at dilution of 1:3000 incubated at room temperature for 1.5 hours.



Immunohistochemical analysis of paraffin-embedded human pancreas cancer tissue slide using 67072-1-Ig (ASK1 antibody) at dilution of 1:300 (under 10x lens. Heat mediated antigen retrieval with Tris-EDTA buffer (pH 9.0).



Immunofluorescent analysis of (-20°C Ethanol) fixed RAW 264.7 cells using ASK1 antibody (67072-1-Ig, Clone: 1C3A10) at dilution of 1:200 and CoraLite®488-Conjugated AffiniPure Goat Anti-Mouse IgG(H+L).