

Allgemeine Informationen

Katalog-Nr.: 67077-1-Ig	GenBank-Zugangsnummer: BC010854	Reinigungsmethode: Protein-G-Reinigung
Größe: 150ul , Konzentration: 680 µg/ml durch die Bradford-Methode mit BSA als Standard;	GeneID (NCBI): 322	CloneNo.: 1B9G10
Wirt: Maus	Vollständiger Name: amyloid beta (A4) precursor protein- binding, family B, member 1 (Fe65)	Empfohlene Verdünnungen: WB 1:1000-1:3000 IHC 1:50-1:500 IF 1:200-1:800
Isotyp: IgG1	Berechnete Masse: 708 aa, 77 kDa	
Immunogen Katalognummer: AG27436	Beobachtete Masse: 100 kDa	

Anwendungen

Geprüfte Anwendungen:

IF, IHC, WB, ELISA

Getestete Reaktivität:

Hausschwein, Human, Maus, Ratte

Hinweis-IHC: Antigendemaskierung mit TE-Puffer pH 9,0 empfohlen. (*) Wahlweise kann die Antigendemaskierung auch mit Citratpuffer pH 6,0 erfolgen.

Positivkontrollen:

WB : Hausschwein-Hirngewebe, Pig brain, Rat brain, Mouse brain

IHC : Maus-Cerebellum-Gewebe, Maushirngewebe

IF : Maushirngewebe,

Hintergrundinformationen

APBB1(Amyloid-beta A4 precursor protein-binding family B member 1) encoded FE65 protein. It was known as a binding partner of APP in the Alzheimer's disease studies, and expressed at high levels in brain especially in cerebellum, hippocampus, and cortex. FE65 and FE65-like (FE65L or FE65L1) proteins are cytoplasmic adaptor proteins that possess two phosphotyrosine binding domains (PTB1 and PTB2) and one WW binding domain (PMID:22429478). After phosphorylation modification, the band of FE65 protein would appear around 100 kDa. However, some tested a non-specific band at 55-60 kDa, it was refer to as FE65-like protein(PMID:12843239).

Lagerung

Lagerungsbedingungen:

Bei -20°C lagern.

Lagerungspuffer:

PBS mit 0.02% Natriumazid und 50% Glycerin pH 7.3.

Aliquotieren ist nicht notwendig bei -20°C Lagerung

***** 20ul-Größen enthalten 0.1% BSA**

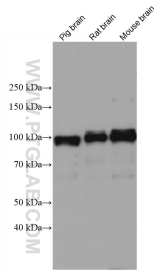
For technical support and original validation data for this product please contact:

T: 1 (888) 4PTGLAB (1-888-478-4522) (toll free in USA), or 1(312) 455-8498 (outside USA)

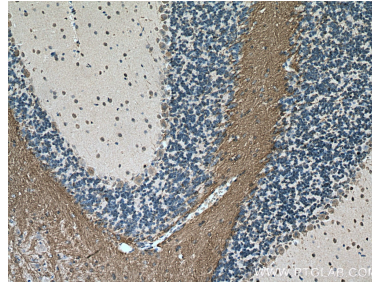
E: proteintech@ptglab.com
W: ptglab.com

This product is exclusively available under Proteintech Group brand and is not available to purchase from any other manufacturer.

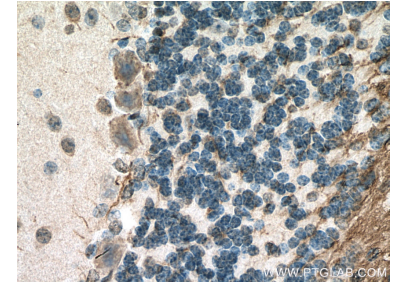
Ausgewählte Validierungsdaten



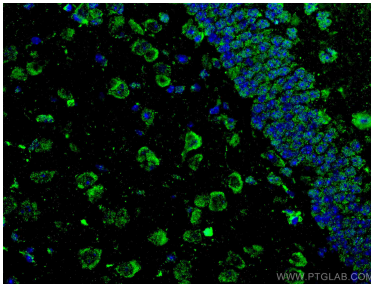
Various lysates were subjected to SDS PAGE followed by western blot with 67077-1-Ig (APBB1 antibody) at dilution of 1:1400 incubated at room temperature for 1.5 hours.



Immunohistochemical analysis of paraffin-embedded mouse cerebellum tissue slide using 67077-1-Ig (APBB1 antibody) at dilution of 1:200 (under 10x lens). Heat mediated antigen retrieval with Tris-EDTA buffer (pH 9.0).



Immunohistochemical analysis of paraffin-embedded mouse cerebellum tissue slide using 67077-1-Ig (APBB1 antibody) at dilution of 1:200 (under 40x lens). Heat mediated antigen retrieval with Tris-EDTA buffer (pH 9.0).



Immunofluorescent analysis of (4% PFA) fixed mouse brain tissue using APBB1 antibody (67077-1-Ig, Clone: 1B9G10) at dilution of 1:400 and CoraLite®488-Conjugated AffiniPure Goat Anti-Mouse IgG(H+L).