

Nur für Forschungszwecke

Alpha Sarcoglycan Monoklonaler Antikörper



Katalog-Nr.:67078-1-Ig

Allgemeine Informationen

Katalog-Nr.: 67078-1-Ig	GenBank-Zugangsnummer: BC025702	Reinigungsmethode: Protein-A-Reinigung
Größe: 150ul , Konzentration: 2200 µg/ml von6442 Nanodrop und 1000 µg/ml durch die Bradford-Methode mit BSA als Standard;	GeneID (NCBI): von6442	CloneNo.: 2B10H7
Wirt: Maus	Vollständiger Name: sarcoglycan, alpha (50kDa dystrophin-associated glycoprotein)	Empfohlene Verdünnungen: WB 1:2000-1:10000 IHC 1:500-1:2000 IF 1:200-1:800
Isotyp: IgG2a	Berechnete Masse: 387 aa, 43 kDa	
Immunogen Katalognummer: AG28800	Beobachtete Masse: 50 kDa	

Anwendungen

Geprüfte Anwendungen:

IF, IHC, WB, ELISA

Getestete Reaktivität:

Hausschwein, Human, Maus, Ratte

Hinweis-IHC: Antigendemaskierung mit TE-Puffer pH 9,0 empfohlen. (*) Wahlweise kann die Antigendemaskierung auch mit Citratpuffer pH 6,0 erfolgen.

Positivkontrollen:

WB : humanes Skelettmuskelgewebe, Hausschwein-Herzgewebe, Hausschwein-Skelettmuskelgewebe, humanes Herzgewebe, Maus-Skelettmuskelgewebe, Rattenherzgewebe, Ratten-Skelettmuskelgewebe

IHC : Maus-Skelettmuskelgewebe, humanes Lebergewebe, Mausherzgewebe, Mauszungengewebe, Rattenherzgewebe, Ratten-Skelettmuskelgewebe

IF : Mausherzgewebe, Maus-Skelettmuskelgewebe

Hintergrundinformationen

Alpha-sarcoglycan is a member of the sarcoglycan-sarcospan complex (SG-SSPN), which is constituted by α/ϵ -, β -, γ -, and δ -SGs as well as SSPN. Alpha-sarcoglycan gene expression is exclusive of striated muscle and is finely regulated during myogenic differentiation, where the amount of alpha-sarcoglycan transcript is selectively increased after differentiation to myotubes (MTs). Alpha sarcoglycan's disruption causes limb-girdle muscular dystrophy.

Lagerung

Lagerungsbedingungen:

Bei -20°C lagern. Nach dem Versand ein Jahr lang stabil

Lagerungspuffer:

PBS mit 0.02% Natriumazid und 50% Glycerin pH 7.3.

Aliquotieren ist nicht notwendig bei -20°C Lagerung

*** 20ul-Größen enthalten 0.1% BSA

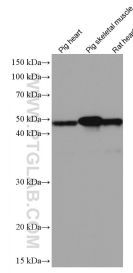
For technical support and original validation data for this product please contact:

T: 1 (888) 4PTGLAB (1-888-478-4522) (toll free in USA), or 1(312) 455-8498 (outside USA)

E: proteintech@ptglab.com
W: ptglab.com

This product is exclusively available under Proteintech Group brand and is not available to purchase from any other manufacturer.

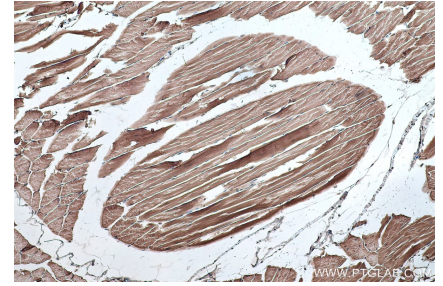
Ausgewählte Validierungsdaten



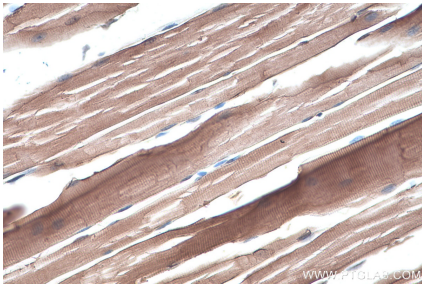
Various lysates were subjected to SDS PAGE followed by western blot with 67078-1-Ig (Alpha sarcoglycan antibody) at dilution of 1:5000 incubated at room temperature for 1.5 hours.



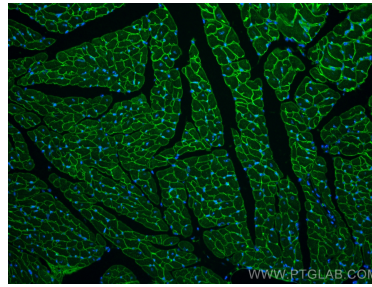
human skeletal muscle tissue were subjected to SDS PAGE followed by western blot with 67078-1-Ig (Alpha sarcoglycan antibody) at dilution of 1:5000 incubated at room temperature for 1.5 hours.



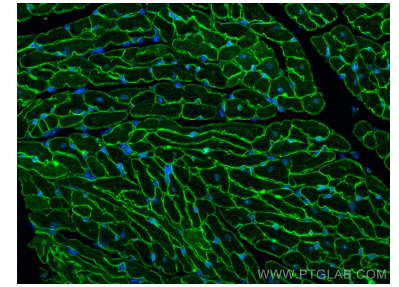
Immunohistochemical analysis of paraffin-embedded mouse skeletal muscle tissue slide using 67078-1-Ig (Alpha Sarcoglycan antibody) at dilution of 1:1000 (under 10x lens). Heat mediated antigen retrieval with Tris-EDTA buffer (pH 9.0).



Immunohistochemical analysis of paraffin-embedded mouse skeletal muscle tissue slide using 67078-1-Ig (Alpha Sarcoglycan antibody) at dilution of 1:1000 (under 40x lens). Heat mediated antigen retrieval with Tris-EDTA buffer (pH 9.0).



Immunofluorescent analysis of (4% PFA) fixed mouse heart tissue using Alpha Sarcoglycan antibody (67078-1-Ig, Clone: 2B10H7) at dilution of 1:400 and CoraLite®488-Conjugated AffiniPure Goat Anti-Mouse IgG(H+L).



Immunofluorescent analysis of (4% PFA) fixed mouse heart tissue using Alpha Sarcoglycan antibody (67078-1-Ig, Clone: 2B10H7) at dilution of 1:400 and CoraLite®488-Conjugated AffiniPure Goat Anti-Mouse IgG(H+L).