

Nur für Forschungszwecke

CES1 Monoklonaler Antikörper

Katalog-Nr.:67079-1-Ig



Allgemeine Informationen

Katalog-Nr.: 67079-1-Ig	GenBank-Zugangsnummer: BC012418	Reinigungsmethode: Protein-G-Reinigung
Größe: 150ul , Konzentration: 900 µg/ml von Nanodrop und 700 µg/ml durch die Bradford-Methode mit BSA als Standard;	GeneID (NCBI): 1066	CloneNo.: 1C11C1
Wirt: Maus	Vollständiger Name: carboxylesterase 1 (monocyte/macrophage serine esterase 1)	Empfohlene Verdünnungen: WB 1:2000-1:10000 IHC 1:300-1:1200 IF 1:50-1:500
Isotyp: IgG1	Berechnete Masse: 566 aa, 62 kDa	
Immunogen Katalognummer: AG10647	Beobachtete Masse: 60-63 kDa	

Anwendungen

Geprüfte Anwendungen: IF, IHC, WB, ELISA	Positivkontrollen: WB : U-937-Zellen, THP-1-Zellen
Getestete Reaktivität: Human	IHC : humanes Lebergewebe, humanes Leberkarzinomgewebe
Hinweis-IHC: <i>Antigendemaskierung mit TE-Puffer pH 9,0 empfohlen. (*) Wahlweise kann die Antigendemaskierung auch mit Citratpuffer pH 6,0 erfolgen.</i>	IF : HepG2-Zellen,

Hintergrundinformationen

CES1(liver carboxylesterase 1) is also named as CES2, SES1 and belongs to the type-B carboxylesterase/lipase family. The deduced 567-amino acid protein contains a putative 18-amino acid signal peptide and a characteristic C-terminal endoplasmic reticulum retention signal (HXEL). It is the major hydrolytic enzyme responsible for the metabolism of numerous therapeutic agents as well as endogenous substrates. Western blot analysis demonstrated that CES1 is expressed in human liver microsomes (HLM) but not in human intestinal microsomes (HIM) (PMID:19185566).

Lagerung

Lagerungsbedingungen:
Bei -20°C lagern. Nach dem Versand ein Jahr lang stabil
Lagerungspuffer:
PBS mit 0.02% Natriumazid und 50% Glycerin pH 7.3.
Aliquotieren ist nicht notwendig bei -20°C Lagerung

***** 20ul-Größen enthalten 0.1% BSA**

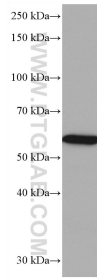
For technical support and original validation data for this product please contact:

T: 1 (888) 4PTGLAB (1-888-478-4522) (toll free in USA), or 1(312) 455-8498 (outside USA)

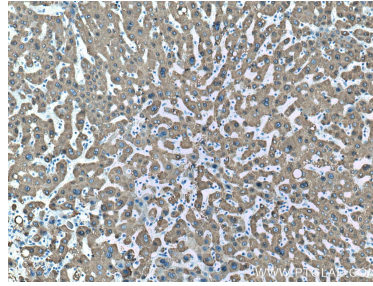
E: proteintech@ptglab.com
W: ptglab.com

This product is exclusively available under Proteintech Group brand and is not available to purchase from any other manufacturer.

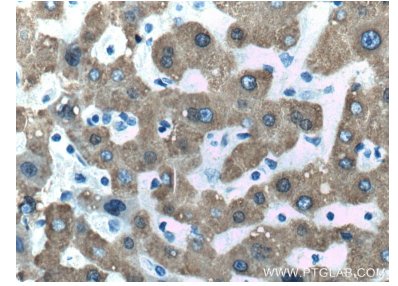
Ausgewählte Validierungsdaten



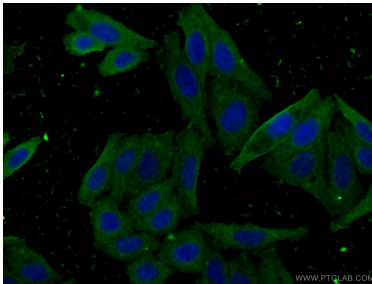
U-937 cells were subjected to SDS PAGE followed by western blot with 67079-1-Ig (CES1 antibody) at dilution of 1:5000 incubated at room temperature for 1.5 hours.



Immunohistochemical analysis of paraffin-embedded human liver tissue slide using 67079-1-Ig (CES1 antibody) at dilution of 1:600 (under 10x lens. Heat mediated antigen retrieval with Tris-EDTA buffer (pH 9.0).



Immunohistochemical analysis of paraffin-embedded human liver tissue slide using 67079-1-Ig (CES1 antibody) at dilution of 1:600 (under 40x lens. Heat mediated antigen retrieval with Tris-EDTA buffer (pH 9.0).



Immunofluorescent analysis of (-20°C Ethanol) fixed HepG2 cells using 67079-1-Ig (CES1 antibody) at dilution of 1:100 and CoraLite488-Conjugated AffiniPure Goat Anti-Mouse IgG(H+L).