

Allgemeine Informationen

Katalog-Nr.: 67092-1-Ig	GenBank-Zugangsnummer: BC016828	Reinigungsmethode: Protein-A-Reinigung
Größe: 150ul , Konzentration: 1219 µg/ml von427 Nanodrop und 500 µg/ml durch die Bradford-Methode mit BSA als Standard;	GeneID (NCBI): Vollständiger Name: N-acylsphingosine amidohydrolase (acid ceramidase) 1	CloneNo.: 1B7E4 Empfohlene Verdünnungen: WB 1:1000-1:8000 IHC 1:50-1:500 IF 1:50-1:500
Wirt: Maus	Berechnete Masse: 44 kDa	
Isotyp: IgG1	Beobachtete Masse: 55 kDa	
Immunogen Katalognummer: AG28645		

Anwendungen

Geprüfte Anwendungen: IF, IHC, WB, ELISA	Positivkontrollen: WB : Ratten-Cerebellum-Gewebe, Hausschwein- Cerebellum-Gewebe, Maushirngewebe, Rattenhirngewebe IHC : humanes Mammakarzinomgewebe, IF : SH-SY5Y-Zellen,
In Publikationen genannte Anwendungen: IF, IP, WB	
Getestete Reaktivität: Hausschwein, Human, Maus, Ratte	
Zitierte Arten: Maus	
Hinweis-IHC: Antigenmaskierung mit TE- Puffer pH 9,0 empfohlen. (*) Wahlweise kann die Antigenmaskierung auch mit Citratpuffer pH 6,0 erfolgen.	

Hintergrundinformationen

ASAH1, also named as AC, ACDase, Acid CDase, PHP32 and ASAH, belongs to the acid ceramidase family. It is a 32 kDa heart protein. ASAH1 is a lipid hydrolase that catalyzes the conversion of ceramide (cer) into sphingosine (SPH) and a free fatty acid. Mutation of ASAH1 will cause the Farber lipogranulomatosis (FL) which also known as Farber disease (FD). ASAH1 is highly expressed in Heart. And it is first synthesized as an 55-60 kDa precursor and subsequently processed to the mature, heterodimeric enzyme (40 + 13 kDa) in the endosomes/Lysosomes.

Bemerkenswerte Veröffentlichungen

Verfasser	Pubmed ID	Journal	Anwendung
Juan Xiao	36068514	Mol Med	WB,IF,IP

Lagerung

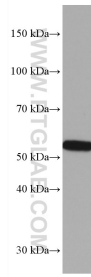
Lagerungsbedingungen:
Bei -20°C lagern. Nach dem Versand ein Jahr lang stabil
Lagerungspuffer:
PBS mit 0.02% Natriumazid und 50% Glycerin pH 7.3.
Aliquotieren ist nicht notwendig bei -20°C Lagerung

***** 20ul-Größen enthalten 0.1% BSA**

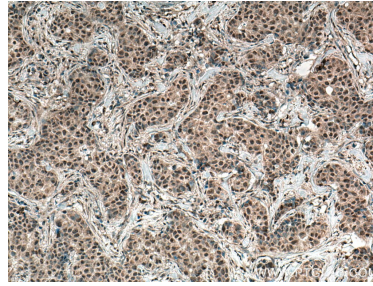
For technical support and original validation data for this product please contact:
T: 1 (888) 4PTGLAB (1-888-478-4522) (toll free in USA), or 1(312) 455-8498 (outside USA)
E: proteintech@ptglab.com
W: ptglab.com

This product is exclusively available under Proteintech Group brand and is not available to purchase from any other manufacturer.

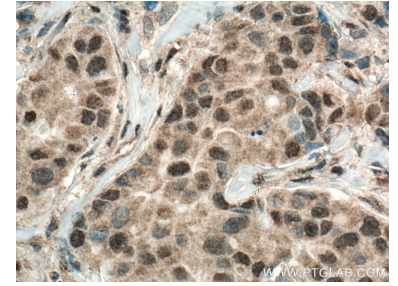
Ausgewählte Validierungsdaten



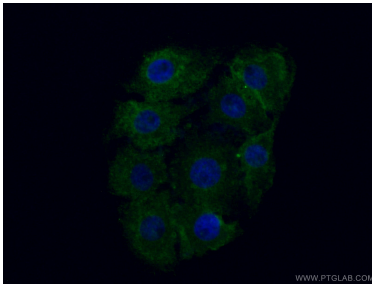
rat cerebellum tissue were subjected to SDS PAGE followed by western blot with 67092-1-Ig (ASAH1 antibody) at dilution of 1:4000 incubated at room temperature for 1.5 hours.



Immunohistochemical analysis of paraffin-embedded human breast cancer tissue slide using 67092-1-Ig (ASAH1 antibody) at dilution of 1:200 (under 10x lens. Heat mediated antigen retrieval with Tris-EDTA buffer (pH 9.0).



Immunohistochemical analysis of paraffin-embedded human breast cancer tissue slide using 67092-1-Ig (ASAH1 antibody) at dilution of 1:200 (under 40x lens. Heat mediated antigen retrieval with Tris-EDTA buffer (pH 9.0).



Immunofluorescent analysis of (4% PFA) fixed SH-SY5Y cells using 67092-1-Ig (ASAH1 antibody) at dilution of 1:100 and CoralLite488-Conjugated AffiniPure Goat Anti-Mouse IgG(H+L).