

## Allgemeine Informationen

<b>Katalog-Nr.:</b> 67094-1-Ig	<b>GenBank-Zugangsnummer:</b> BC018163	<b>Reinigungsmethode:</b> Protein-A-Reinigung
<b>Größe:</b> 150ul , Konzentration: 2200 µg/ml von5899 Nanodrop und 1000 µg/ml durch die Bradford-Methode mit BSA als Standard;	<b>GeneID (NCBI):</b> 5899	<b>CloneNo.:</b> 1D11C11
<b>Wirt:</b> Maus	<b>Vollständiger Name:</b> v-ral simian leukemia viral oncogene homolog B (ras related; GTP binding protein)	<b>Empfohlene Verdünnungen:</b> WB 1:5000-1:50000 IHC 1:500-1:2000 IF 1:400-1:1600
<b>Isotyp:</b> IgG2a	<b>Berechnete Masse:</b> 206 aa, 23 kDa	
<b>Immunogen Katalognummer:</b> AG28600	<b>Beobachtete Masse:</b> 24 kDa	

## Anwendungen

### Geprüfte Anwendungen:

IF, IHC, WB, ELISA

### Getestete Reaktivität:

Hausschwein, Human, Maus, Ratte

**Hinweis-IHC: Antigenmaskierung mit TE-Puffer pH 9,0 empfohlen. (\*) Wahlweise kann die Antigenmaskierung auch mit Citratpuffer pH 6,0 erfolgen.**

### Positivkontrollen:

**WB** : HeLa-Zellen, Hausschweinhirnzellen, HepG2-Zellen, Jurkat-Zellen, Maushirngewebe, MCF-7-Zellen, Rattenhirngewebe

**IHC** : Maus-Blasengewebe, humanes Lungenkarzinomgewebe, Mauslebergewebe, Mauslungengewebe, Maus-Plazenta-Gewebe

**IF** : humanes Lungenkarzinomgewebe,

## Hintergrundinformationen

### Lagerung

#### Lagerungsbedingungen:

Bei -20°C lagern.

#### Lagerungspuffer:

PBS mit 0.02% Natriumazid und 50% Glycerin pH 7.3.

Aliquotieren ist nicht notwendig bei -20°C Lagerung

\*\*\* 20ul-Größen enthalten 0.1% BSA

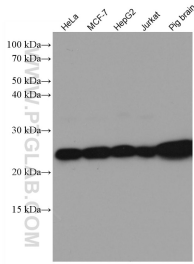
For technical support and original validation data for this product please contact:

T: 1 (888) 4PTGLAB (1-888-478-4522) (toll free in USA), or 1(312) 455-8498 (outside USA)

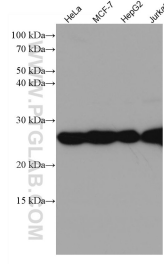
E: proteintech@ptglab.com  
W: ptglab.com

This product is exclusively available under Proteintech Group brand and is not available to purchase from any other manufacturer.

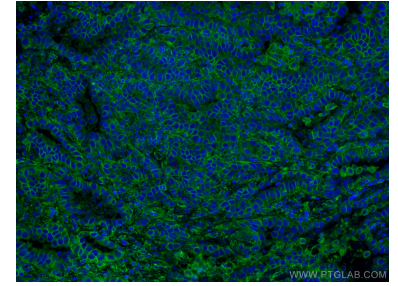
## Ausgewählte Validierungsdaten



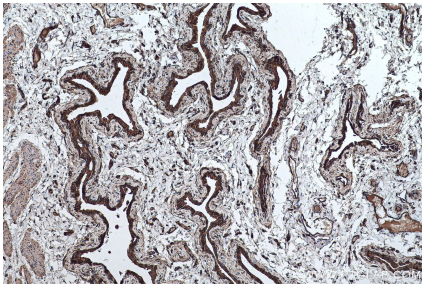
Various lysates were subjected to SDS PAGE followed by western blot with 67094-1-Ig (RALB antibody) at dilution of 1:3000 incubated at room temperature for 1.5 hours.



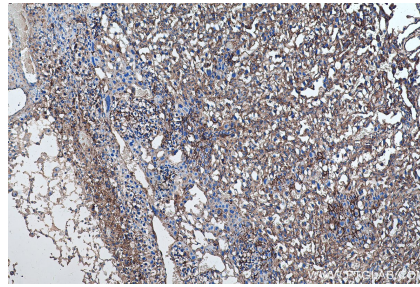
Various lysates were subjected to SDS PAGE followed by western blot with 67094-1-Ig (RALB antibody) at dilution of 1:10000 incubated at room temperature for 1.5 hours.



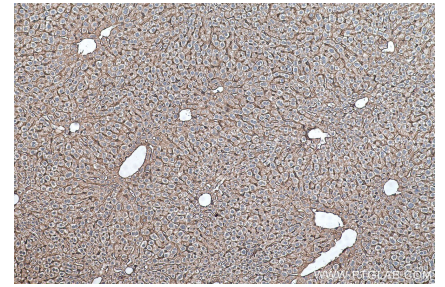
Immunofluorescent analysis of (4% PFA) fixed human lung cancer tissue using RALB antibody (67094-1-Ig, Clone: 1D11C11) at dilution of 1:800 and CoraLite®488-Conjugated AffiniPure Goat Anti-Mouse IgG(H+L).



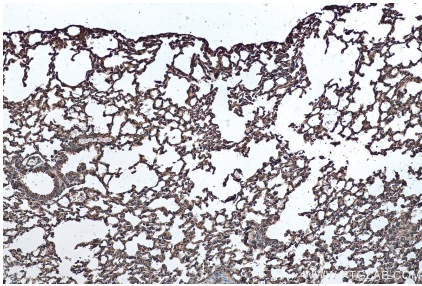
Immunohistochemical analysis of paraffin-embedded mouse bladder tissue slide using 67094-1-Ig (RALB antibody) at dilution of 1:1000 (under 10x lens). Heat mediated antigen retrieval with Tris-EDTA buffer (pH 9.0).



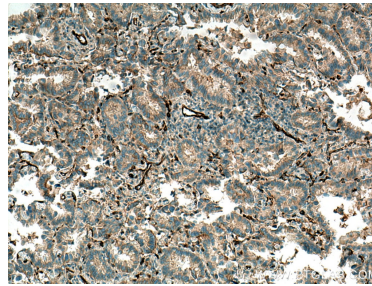
Immunohistochemical analysis of paraffin-embedded mouse placenta tissue slide using 67094-1-Ig (RALB antibody) at dilution of 1:1000 (under 10x lens). Heat mediated antigen retrieval with Tris-EDTA buffer (pH 9.0).



Immunohistochemical analysis of paraffin-embedded mouse liver tissue slide using 67094-1-Ig (RALB antibody) at dilution of 1:1000 (under 10x lens). Heat mediated antigen retrieval with Tris-EDTA buffer (pH 9.0).



Immunohistochemical analysis of paraffin-embedded mouse lung tissue slide using 67094-1-Ig (RALB antibody) at dilution of 1:1000 (under 10x lens). Heat mediated antigen retrieval with Tris-EDTA buffer (pH 9.0).



Immunohistochemical analysis of paraffin-embedded human lung cancer tissue slide using 67094-1-Ig (RALB antibody) at dilution of 1:1000 (under 10x lens). Heat mediated antigen retrieval with Tris-EDTA buffer (pH 9.0).