

Nur für Forschungszwecke

PICK1 Monoklonaler Antikörper

Katalog-Nr.:67099-1-Ig



Allgemeine Informationen

Katalog-Nr.: 67099-1-Ig	GenBank-Zugangsnummer: BC017561	Reinigungsmethode: Protein-A-Reinigung
Größe: 150ul , Konzentration: 2300 µg/ml von9463 Nanodrop und 1000 µg/ml durch die Bradford-Methode mit BSA als Standard;	GeneID (NCBI): 9463	CloneNo.: 2E11A4
Wirt: Maus	Vollständiger Name: protein interacting with PRKCA 1	Empfohlene Verdünnungen: WB 1:1000-1:6000
Isotyp: IgG2a	Berechnete Masse: 47 kDa	
Immunogen Katalognummer: AG28609	Beobachtete Masse: 50 kDa	

Anwendungen

Geprüfte Anwendungen: WB,ELISA	Positivkontrollen: WB : HeLa-Zellen, Hausschwein-Hirngewebe, LNCaP-Zellen, Moushirngewebe, MCF-7-Zellen, Rattenhirngewebe
Getestete Reaktivität: Hausschwein, Human, Maus, Ratte	

Hintergrundinformationen

Protein interacting with C kinase 1 (PICK1) was first cloned as a PKC-binding partner through yeast two hybrid system. PICK1 acts as a critical regulator of membrane receptors' subcellular trafficking to modulate neural processes such as learning and memory, and is widely expressed in brain, testis, heart, lung, liver, kidney and muscle. It probably binds to and organize the subcellular localization of a variety of membrane proteins containing some PDZ recognition sequence, for instance, PICK1 is a critical mediator of α -amino-3-hydroxy-5-methyl-4-isoxazolepropionic acid receptor (AMPA) trafficking in neural synapses. PICK1 expression on D-serine release and glutamate transport in astrocytes suggests a potential implication of PICK1 in the progression of amyotrophic lateral sclerosis (ALS). PICK1 may also participate in breast cancer development through inhibition of TGF- β signaling.

Lagerung

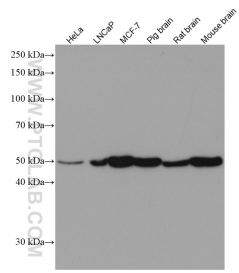
Lagerungsbedingungen:
Bei -20°C lagern.
Lagerungspuffer:
PBS mit 0.02% Natriumazid und 50% Glycerin pH 7.3.
Aliquotieren ist nicht notwendig bei -20°C Lagerung

***** 20ul-Größen enthalten 0.1% BSA**

For technical support and original validation data for this product please contact:
T: 1 (888) 4PTGLAB (1-888-478-4522) (toll free in USA), or 1(312) 455-8498 (outside USA)
E: proteintech@ptglab.com
W: ptglab.com

This product is exclusively available under Proteintech Group brand and is not available to purchase from any other manufacturer.

Ausgewählte Validierungsdaten



Various lysates were subjected to SDS PAGE followed by western blot with 67099-1-Ig (PICK1 antibody) at dilution of 1:3000 incubated at room temperature for 1.5 hours.