

Allgemeine Informationen

Katalog-Nr.: 67131-1-Ig	GenBank-Zugangsnummer: BC113488	Reinigungsmethode: Protein-A-Reinigung
Größe: 150ul , Konzentration: 2100 µg/ml von2488 Nanodrop und 1000 µg/ml durch die Bradford-Methode mit BSA als Standard;	GeneID (NCBI): 2488	CloneNo.: 1B10A11
Wirt: Maus	Vollständiger Name: follicle stimulating hormone, beta polypeptide	Empfohlene Verdünnungen: IHC 1:500-1:2000 IF 1:200-1:800
Isotyp: IgG2b	Berechnete Masse: 129 aa, 15 kDa	
Immunogen Katalognummer: AG13788		

Anwendungen

Geprüfte Anwendungen: IF, IHC, ELISA	Positivkontrollen:
Getestete Reaktivität: Human	IHC : humanes Hypophysengewebe, humanes Hypophysenadenom-Gewebe
Hinweis-IHC: Antigenmaskierung mit TE- Puffer pH 9,0 empfohlen. (*) Wahlweise kann die Antigenmaskierung auch mit Citratpuffer pH 6,0 erfolgen.	IF : HepG2-Zellen,

Hintergrundinformationen

The FSHB gene encodes the beta subunit of follicle-stimulating hormone (FSH), particularly expressed in gonadotroph cells within the anterior pituitary gland and plays a critical role in the regulation of gonadal function, pubertal maturation and reproductive processes in mammals. The transcription of the FSHB gene is critical for the production of the FSH hormone(PMID:28281143). And FSH is required for ovarian folliculogenesis in females, in males it promotes spermatogenesis in conjunction with testosterone(PMID:11739331). Mutations in FSHB gene would result in infertility both in men and women (PMID: 23766128).

Lagerung

Lagerungsbedingungen:
Bei -20°C lagern.
Lagerungspuffer:
PBS mit 0.02% Natriumazid und 50% Glycerin pH 7.3.
Aliquotieren ist nicht notwendig bei -20°C Lagerung

***** 20ul-Größen enthalten 0.1% BSA**

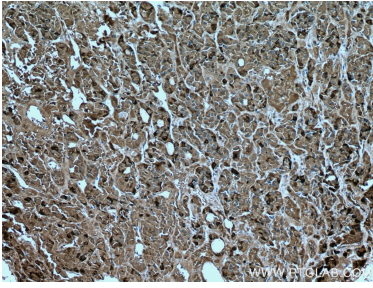
For technical support and original validation data for this product please contact:

T: 1 (888) 4PTGLAB (1-888-478-4522) (toll free
in USA), or 1(312) 455-8498 (outside USA)

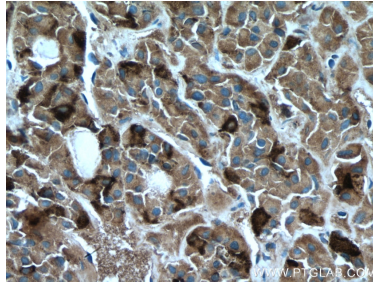
E: proteintech@ptglab.com
W: ptglab.com

This product is exclusively available under Proteintech Group brand and is not available to purchase from any other manufacturer.

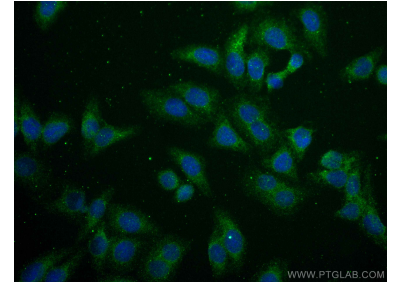
Ausgewählte Validierungsdaten



Immunohistochemical analysis of paraffin-embedded human pituitary tissue slide using 67131-1-Ig (FSHB antibody) at dilution of 1:1000 (under 10x lens. Heat mediated antigen retrieval with Tris-EDTA buffer (pH 9.0).



Immunohistochemical analysis of paraffin-embedded human pituitary tissue slide using 67131-1-Ig (FSHB antibody) at dilution of 1:1000 (under 40x lens. Heat mediated antigen retrieval with Tris-EDTA buffer (pH 9.0).



Immunofluorescent analysis of (-20°C Ethanol) fixed HepG2 cells using FSHB antibody (67131-1-Ig, Clone: 1B10A11.) at dilution of 1:400 and CoraLite®488-Conjugated AffiniPure Goat Anti-Mouse IgG(H+L).