

Allgemeine Informationen

Katalog-Nr.: 67135-1-Ig	GenBank-Zugangsnummer: BC028152	Reinigungsmethode: Protein-A-Reinigung
Größe: 150ul , Konzentration: 2000 µg/ml von945 Nanodrop und 1000 µg/ml durch die Bradford-Methode mit BSA als Standard;	GeneID (NCBI): Vollständiger Name: CD33 molecule	CloneNo.: 1B2E5
Wirt: Maus	Berechnete Masse: 364 aa, 40 kDa	Empfohlene Verdünnungen: WB 1:1000-1:6000 IHC 1:500-1:2000 IF 1:200-1:800
Isotyp: IgG2a	Beobachtete Masse: 67-70 kDa	
Immunogen Katalognummer: AG11402		

Anwendungen

Geprüfte Anwendungen: IF, IHC, WB, ELISA	Positivkontrollen: WB : THP-1-Zellen, HL-60-Zellen
Getestete Reaktivität: Human	IHC : humanes Milzgewebe, IF : THP-1-Zellen,
Hinweis-IHC: Antigenmaskierung mit TE-Puffer pH 9,0 empfohlen. (*) Wahlweise kann die Antigenmaskierung auch mit Citratpuffer pH 6,0 erfolgen.	

Hintergrundinformationen

CD33, also referred to as Siglec-3, is a 67-kDa glycosylated transmembrane protein of sialic acid-binding immunoglobulin-like lectin (siglec) family. CD33 is expressed on monocytes, myeloid progenitors, granulocytes, mast cells, some T cells. It may mediate cell-to-cell adhesion and act as a receptor that inhibits the proliferation of normal and leukemic myeloid cells.

Lagerung

Lagerungsbedingungen:
Bei -20°C lagern.
Lagerungspuffer:
PBS mit 0.02% Natriumazid und 50% Glycerin pH 7.3.
Aliquotieren ist nicht notwendig bei -20°C Lagerung

*** 20ul-Größen enthalten 0.1% BSA

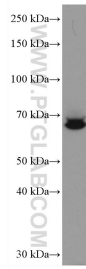
For technical support and original validation data for this product please contact:

T: 1 (888) 4PTGLAB (1-888-478-4522) (toll free in USA), or 1(312) 455-8498 (outside USA)

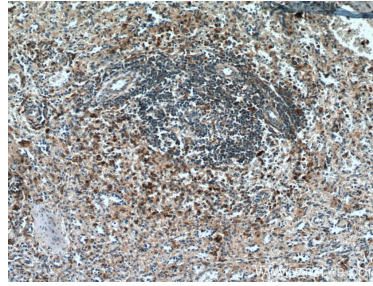
E: proteintech@ptglab.com
W: ptglab.com

This product is exclusively available under Proteintech Group brand and is not available to purchase from any other manufacturer.

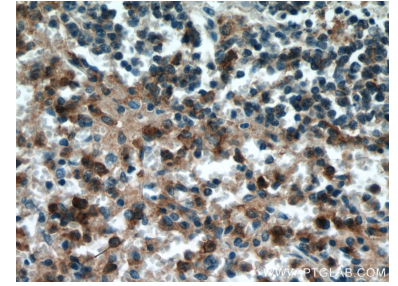
Ausgewählte Validierungsdaten



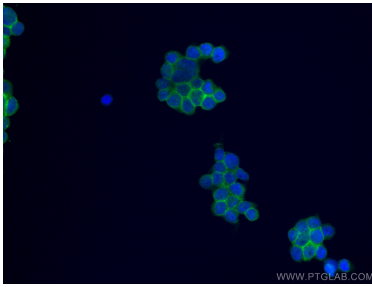
THP-1 cells were subjected to SDS PAGE followed by western blot with 67135-1-Ig (CD33 antibody) at dilution of 1:3000 incubated at room temperature for 1.5 hours.



Immunohistochemical analysis of paraffin-embedded human spleen tissue slide using 67135-1-Ig (CD33 antibody) at dilution of 1:1000 (under 10x lens). Heat mediated antigen retrieval with Tris-EDTA buffer (pH 9.0).



Immunohistochemical analysis of paraffin-embedded human spleen tissue slide using 67135-1-Ig (CD33 antibody) at dilution of 1:1000 (under 40x lens). Heat mediated antigen retrieval with Tris-EDTA buffer (pH 9.0).



Immunofluorescent analysis of (4% PFA) fixed THP-1 cells using CD33 antibody (67135-1-Ig, Clone: 1B2E5) at dilution of 1:400 and CoraLite®488-Conjugated AffiniPure Goat Anti-Mouse IgG(H+L).