

Nur für Forschungszwecke

IRF8 Monoklonaler Antikörper

Katalog-Nr.:67142-1-Ig



Allgemeine Informationen

Katalog-Nr.: 67142-1-Ig	GenBank-Zugangsnummer: BC126247	Reinigungsmethode: Protein-A-Reinigung
Größe: 150ul , Konzentration: 1700 µg/ml von Nanodrop und 1000 µg/ml durch die Bradford-Methode mit BSA als Standard;	GeneID (NCBI): 3394	CloneNo.: 3A10A4
Wirt: Maus	Vollständiger Name: ICSBP1	Empfohlene Verdünnungen: WB 1:1000-1:6000 IF 1:400-1:1600
Isotyp: IgG2b	Berechnete Masse: 426 aa, 48 kDa	
Immunogen Katalognummer: AG19909	Beobachtete Masse: 48 kDa	

Anwendungen

Geprüfte Anwendungen: IF, WB, ELISA	Positivkontrollen: WB : Ramos-Zellen, Daudi-Zellen, Raji-Zellen
Getestete Reaktivität: Human	IF : THP-1-Zellen,

Hintergrundinformationen

IRF8 also named as ICSBP1, is a transcription factor of the IFN regulatory factor (IRF) family. The IRF family proteins bind to the IFN-stimulated response element (ISRE) and regulate expression of genes stimulated by type I IFNs, namely IFN-alpha and IFN-beta. IRF family proteins also control expression of IFN-alpha and IFN-beta-regulated genes that are induced by viral infection. IRF8 specifically binds to the upstream regulatory region of type I IFN and IFN-inducible MHC class I genes (the IFN consensus sequence (ICS)). It plays a negative regulatory role in cells of the immune system. It is predominantly in lymphoid tissues.

Lagerung

Lagerungsbedingungen:
Bei -20°C lagern. Nach dem Versand ein Jahr lang stabil
Lagerungspuffer:
PBS mit 0.02% Natriumazid und 50% Glycerin pH 7.3.
Aliquotieren ist nicht notwendig bei -20°C Lagerung

*** 20ul-Größen enthalten 0.1% BSA

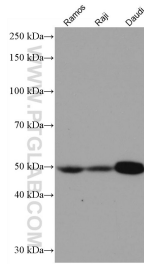
For technical support and original validation data for this product please contact:

T: 1 (888) 4PTGLAB (1-888-478-4522) (toll free
in USA), or 1(312) 455-8498 (outside USA)

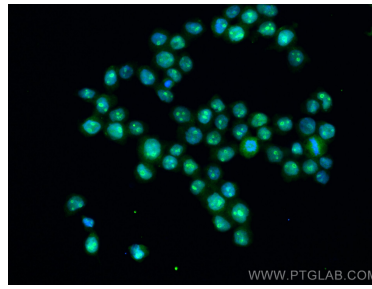
E: proteintech@ptglab.com
W: ptglab.com

This product is exclusively available under Proteintech Group brand and is not available to purchase from any other manufacturer.

Ausgewählte Validierungsdaten



Various lysates were subjected to SDS PAGE followed by western blot with 67142-1-Ig (IRF8 antibody) at dilution of 1:3000 incubated at room temperature for 1.5 hours.



Immunofluorescent analysis of (4% PFA) fixed THP-1 cells using IRF8 antibody (67142-1-Ig, Clone: 3A10A4) at dilution of 1:800 and CoraLite®488-Conjugated AffiniPure Goat Anti-Mouse IgG(H+L).