

Nur für Forschungszwecke

# TROVE2 Monoklonaler Antikörper

Katalog-Nr.: 67149-1-Ig



## Allgemeine Informationen

<b>Katalog-Nr.:</b> 67149-1-Ig	<b>GenBank-Zugangsnummer:</b> BC036658	<b>Reinigungsmethode:</b> Protein-A-Reinigung
<b>Größe:</b> 150ul, Konzentration: 1800 µg/ml von 6738 Nanodrop und 1000 µg/ml durch die Bradford-Methode mit BSA als Standard;	<b>GeneID (NCBI):</b> Vollständiger Name: TROVE domain family, member 2	<b>CloneNo.:</b> 2A4E5
<b>Wirt:</b> Maus	<b>Berechnete Masse:</b> 60 kDa	<b>Empfohlene Verdünnungen:</b> WB 1:5000-1:50000 IHC 1:1000-1:4000
<b>Isotyp:</b> IgG2a	<b>Beobachtete Masse:</b> 60 kDa	
<b>Immunogen Katalognummer:</b> AG4379		

## Anwendungen

<b>Geprüfte Anwendungen:</b> IHC, WB, ELISA	<b>Positivkontrollen:</b>
<b>Getestete Reaktivität:</b> Human, Maus, Ratte	<b>WB:</b> HeLa-Zellen, HEK-293-Zellen, Jurkat-Zellen, MCF-7-Zellen
<b>Hinweis-IHC:</b> Antigenmaskierung mit <b>TE-Puffer pH 9,0 empfohlen. (*) Wahlweise kann die Antigenmaskierung auch mit Citratpuffer pH 6,0 erfolgen.</b>	<b>IHC:</b> Mauseingewebe,

## Hintergrundinformationen

TROVE2, also named as RO60 or RoRNP, is a 538 amino acid protein, which is localized in cytoplasmic mRNP granules containing untranslated mRNAs. TROVE2 as a RNA-binding protein that binds to misfolded non-coding RNAs, pre-5S rRNA, and several small cytoplasmic RNA molecules known as Y RNAs. TROVE2 may stabilize some of these RNAs and protect them from degradation (PubMed:18056422). TROVE2 binds to endogenous Alu retroelements which are induced by type I IFN and stimulate proinflammatory cytokine secretion.

## Lagerung

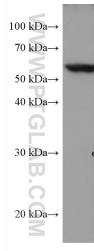
**Lagerungsbedingungen:**  
Bei -20°C lagern.  
**Lagerungspuffer:**  
PBS mit 0.02% Natriumazid und 50% Glycerin pH 7.3.  
**Aliquotieren ist nicht notwendig bei -20°C Lagerung**

**\*\*\* 20ul-Größen enthalten 0.1% BSA**

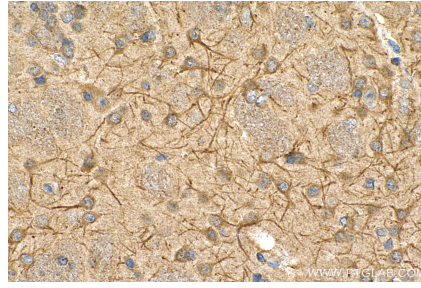
For technical support and original validation data for this product please contact:  
T: 1 (888) 4PTGLAB (1-888-478-4522) (toll free in USA), or 1(312) 455-8498 (outside USA)  
E: proteintech@ptglab.com  
W: ptglab.com

This product is exclusively available under Proteintech Group brand and is not available to purchase from any other manufacturer.

## Ausgewählte Validierungsdaten



HeLa cells were subjected to SDS PAGE followed by western blot with 67149-1-Ig (TROVE2 antibody) at dilution of 1:10000 incubated at room temperature for 1.5 hours.



Immunohistochemical analysis of paraffin-embedded mouse brain tissue slide using 67149-1-Ig (TROVE2 antibody) at dilution of 1:2000 (under 40x lens). Heat mediated antigen retrieval with Tris-EDTA buffer (pH 9.0).