

Nur für Forschungszwecke

SUMO2/3 Monoklonaler Antikörper

Katalog-Nr.:67154-1-Ig

Vorgestelltes Produkt



Allgemeine Informationen

Katalog-Nr.: 67154-1-Ig	GenBank-Zugangsnummer: BC008450	Reinigungsmethode: Protein-A-Reinigung
Größe: 150ul , Konzentration: 1800 µg/ml von6613 Nanodrop und 1000 µg/ml durch die Bradford-Methode mit BSA als Standard;	GeneID (NCBI): SMT3 suppressor of mif two 3 homolog 2 (S. cerevisiae)	CloneNo.: 1A1B3
Wirt: Maus	Vollständiger Name: SMT3 suppressor of mif two 3 homolog 2 (S. cerevisiae)	Empfohlene Verdünnungen: WB 1:1000-1:6000 IHC 1:250-1:1000 IF 1:400-1:1600
Isotyp: IgG2b	Berechnete Masse: 11 kDa	
Immunogen Katalognummer: AG28672	Beobachtete Masse: 18 kDa	

Anwendungen

Geprüfte Anwendungen:

IF, IHC, WB, ELISA

Getestete Reaktivität:

Human, Maus, Ratte

Hinweis-IHC: Antigenmaskierung mit TE-Puffer pH 9,0 empfohlen. (*) Wahlweise kann die Antigenmaskierung auch mit Citratpuffer pH 6,0 erfolgen.

Positivkontrollen:

WB : HEK-293-Zellen, A549-Zellen, Jurkat-Zellen, K-562-Zellen, NIH/3T3-Zellen, PC-12-Zellen

IHC : humanes Prostatakarzinomgewebe, humanes Mammakarzinomgewebe

IF : HeLa-Zellen,

Hintergrundinformationen

Ubiquitin is most famous for its function in targeting proteins for degradation by the 26S proteasome, ubiquitin needs to be attached to a substrate in chains (polyubiquitylation) before being recognized by proteasome. Similarly, SUMO (small ubiquitin-related modifier) can be linked to substrates in chains (polysumoylation), SUMO modification has been implicated in many important cellular processes including the control of genome stability, signal transduction, targeting to and formation of nuclear compartments, cell cycle and meiosis. There are 4 confirmed SUMO isoforms in human, SUMO-1, SUMO-2, SUMO-3 and SUMO-4. SUMO-2 and SUMO-3 are nearly identical but are distinct from SUMO-1. SUMO2/3 conjugation was recently widely involved in neuroprotective activities. A substitution (M55V) of SUMO4 was strongly associated with the pathogenesis of type 1 diabetes (T1D) involving NF kappa B related mechanisms.

Lagerung

Lagerungsbedingungen:

Bei -20°C lagern. Nach dem Versand ein Jahr lang stabil

Lagerungspuffer:

PBS mit 0.02% Natriumazid und 50% Glycerin pH 7.3.

Aliquotieren ist nicht notwendig bei -20°C Lagerung

*** 20ul-Größen enthalten 0.1% BSA

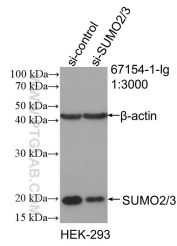
For technical support and original validation data for this product please contact:

T: 1 (888) 4PTGLAB (1-888-478-4522) (toll free in USA), or 1(312) 455-8498 (outside USA)

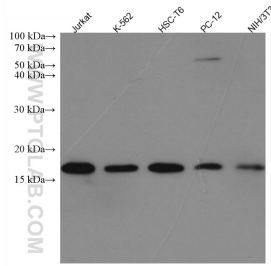
E: proteintech@ptglab.com
W: ptglab.com

This product is exclusively available under Proteintech Group brand and is not available to purchase from any other manufacturer.

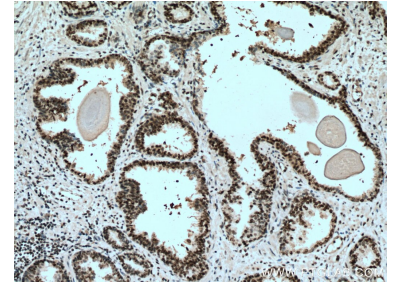
Ausgewählte Validierungsdaten



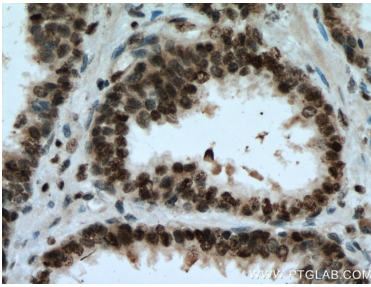
WB result of SUMO2/3 antibody (67154-1-Ig; 1:3000; incubated at room temperature for 1.5 hours) with sh-Control and sh-SUMO2/3 transfected HEK-293 cells.



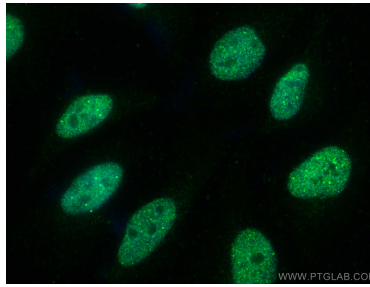
Various lysates were subjected to SDS PAGE followed by western blot with 67154-1-Ig (SUMO2/3 antibody) at dilution of 1:5000 incubated at room temperature for 1.5 hours.



Immunohistochemical analysis of paraffin-embedded human prostate cancer tissue slide using 67154-1-Ig (SUMO2/3 antibody) at dilution of 1:500 (under 10x lens). Heat mediated antigen retrieval with Tris-EDTA buffer (pH 9.0).



Immunohistochemical analysis of paraffin-embedded human prostate cancer tissue slide using 67154-1-Ig (SUMO2/3 antibody) at dilution of 1:500 (under 40x lens). Heat mediated antigen retrieval with Tris-EDTA buffer (pH 9.0).



Immunofluorescent analysis of (4% PFA) fixed HeLa cells using SUMO2/3 antibody (67154-1-Ig, Clone: 1A1B3) at dilution of 1:800 and CoraLite® 488-Conjugated AffiniPure Goat Anti-Mouse IgG(H+L).