

Nur für Forschungszwecke

ACLY Monoklonaler Antikörper

Katalog-Nr.: 67166-1-Ig **2 Publikationen**



Allgemeine Informationen

Katalog-Nr.: 67166-1-Ig	GenBank-Zugangsnummer: BC006195	Reinigungsmethode: Protein-A-Reinigung
Größe: 150ul, Konzentration: 1100 µg/ml von 47 Nanodrop und 1000 µg/ml durch die Bradford-Methode mit BSA als Standard;	GeneID (NCBI): Vollständiger Name: ATP citrate lyase	CloneNo.: 1E10D5
Wirt: Maus	Berechnete Masse: 121 kDa	Empfohlene Verdünnungen: WB 1:1000-1:10000 IHC 1:1000-1:4000 IF 1:50-1:500
Isotyp: IgM	Beobachtete Masse: 120 kDa	
Immunogen Katalognummer: AG7709		

Anwendungen

Geprüfte Anwendungen: IF, IHC, WB, ELISA	Positivkontrollen: WB: Jurkat-Zellen, MCF-7-Zellen
In Publikationen genannte Anwendungen: IF, IP, WB	IHC: humanes Prostatakarzinomgewebe,
Getestete Reaktivität: Human, Maus, Ratte	IF: A549-Zellen,
Zitierte Arten: Human	
Hinweis-IHC: Antigenmaskierung mit TE-Puffer pH 9,0 empfohlen. (*) Wahlweise kann die Antigenmaskierung auch mit Citratpuffer pH 6,0 erfolgen.	

Hintergrundinformationen

ACLY(ATP-citrate synthase) is also named as ACL. It is the primary enzyme responsible for the synthesis of cytosolic acetyl-CoA. ACLY serves as not only a target in oxygenated cells for suppression of lipid synthesis and histone acetylation, but also as a susceptible target in hypoxic cells to restore inhibition of glycolysis. In nonsmall cell lung carcinoma and hepatocellular carcinoma, ACLY is overexpressed compared with normal parenchyma suggesting that ACLY may represent a common target among highly malignant tumors(PMID:19795461). This protein has 2 isoforms produced by alternative splicing.

Bemerkenswerte Veröffentlichungen

Verfasser	Pubmed ID	Journal	Anwendung
Yu Hu	34539243	Mediators Inflamm	WB
Feifei Zhou	36241648	Cell Death Dis	WB,IF,IP

Lagerung

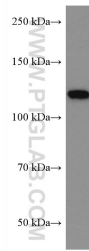
Lagerungsbedingungen:
Bei -20°C lagern.
Lagerungspuffer:
PBS mit 0.02% Natriumazid und 50% Glycerin pH 7.3.
Aliquotieren ist nicht notwendig bei -20°C Lagerung

*** 20ul-Größen enthalten 0.1% BSA

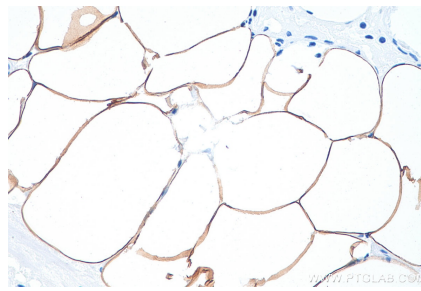
For technical support and original validation data for this product please contact:
T: 1 (888) 4PTGLAB (1-888-478-4522) (toll free in USA), or 1(312) 455-8498 (outside USA)
E: proteintech@ptglab.com
W: ptglab.com

This product is exclusively available under Proteintech Group brand and is not available to purchase from any other manufacturer.

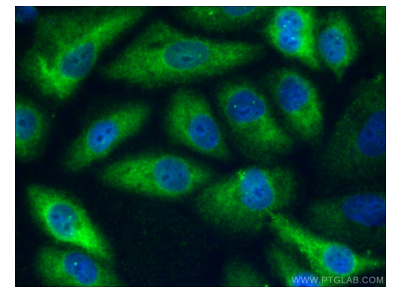
Ausgewählte Validierungsdaten



Jurkat cells were subjected to SDS PAGE followed by western blot with 67166-1-Ig (ACLY antibody) at dilution of 1:10000 incubated at room temperature for 1.5 hours.



Immunohistochemical analysis of paraffin-embedded human prostate cancer tissue slide using 67166-1-Ig (ACLY antibody) at dilution of 1:2000 (under 40x lens). Heat mediated antigen retrieval with Tris-EDTA buffer (pH 9.0).



Immunofluorescent analysis of (-20°C Ethanol) fixed A549 cells using 67166-1-Ig (ACLY antibody) at dilution of 1:100 and CoraLite488-Conjugated AffiniPure Goat Anti-Mouse IgG(H+L).