

Nur für Forschungszwecke

GPI Monoklonaler Antikörper

Katalog-Nr.:67178-1-Ig

Vorgestelltes Produkt



Allgemeine Informationen

Katalog-Nr.: 67178-1-Ig	GenBank-Zugangsnummer: BC004982	Reinigungsmethode: Protein-G-Reinigung
Größe: 150ul , Konzentration: 1800 µg/ml von2821 Nanodrop und 1000 µg/ml durch die Bradford-Methode mit BSA als Standard;	GeneID (NCBI): 22821	CloneNo.: 2F11E4
Wirt: Maus	Vollständiger Name: glucose phosphate isomerase	Empfohlene Verdünnungen: WB 1:5000-1:50000 IHC 1:500-1:2000 IF 1:50-1:500
Isotyp: IgG1	Berechnete Masse: 63 kDa	
Immunogen Katalognummer: AG7419	Beobachtete Masse: 55-64 kDa	

Anwendungen

Geprüfte Anwendungen: IF, IHC, WB,ELISA	Positivkontrollen:
Getestete Reaktivität: Human	WB : HepG2-Zellen, HEK-293-Zellen, HeLa-Zellen, LNCaP-Zellen, PC-3-Zellen
Hinweis-IHC: Antigenmaskierung mit TE- Puffer pH 9,0 empfohlen. (*) Wahlweise kann die Antigenmaskierung auch mit Citratpuffer pH 6,0 erfolgen.	IHC : humanes Lungenkarzinomgewebe, IF : PC-3-Zellen,

Hintergrundinformationen

GPI(Glucose-6-phosphate isomerase), which is also named as autocrine motility factor (AMF), phosphoglucose isomerase(PGI), Neuroleukinin(NLK), phosphohexose isomerase(PHI) or sperm antigen 36(SA-36), is a housekeeping cytosolic enzyme that plays a key role in both glycolysis and gluconeogenesis pathways. It is also a multifunctional protein that displays cytokine properties, eliciting mitogenic, motogenic, and differentiation activities, and has been implicated in tumor progression and metastasis (PMID:12783864, 19603112). This protein can exist as a homodimer in the catalytically active form and a monomer in the secreted form (PMID:11371164). It has 2 isoforms produced by alternative splicing with the calculated molecular mass of 63-64kDa, and an apparent molecular mass of 55 and 64 kDa under non-reducing and reducing conditions, respectively(PMID: 19603112, 11004567).

Lagerung

Lagerungsbedingungen:
Bei -20°C lagern.
Lagerungspuffer:
PBS mit 0.02% Natriumazid und 50% Glycerin pH 7.3.
Aliquotieren ist nicht notwendig bei -20°C Lagerung

*** 20ul-Größen enthalten 0.1% BSA

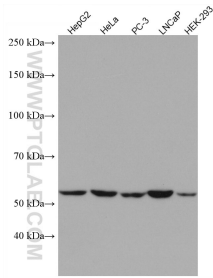
For technical support and original validation data for this product please contact:

T: 1 (888) 4PTGLAB (1-888-478-4522) (toll free
in USA), or 1(312) 455-8498 (outside USA)

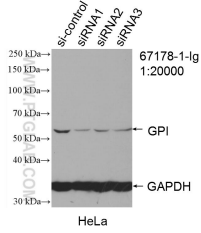
E: proteintech@ptglab.com
W: ptglab.com

This product is exclusively available under Proteintech Group brand and is not available to purchase from any other manufacturer.

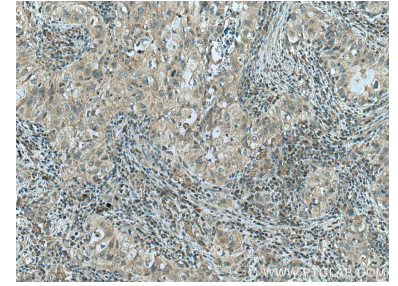
Ausgewählte Validierungsdaten



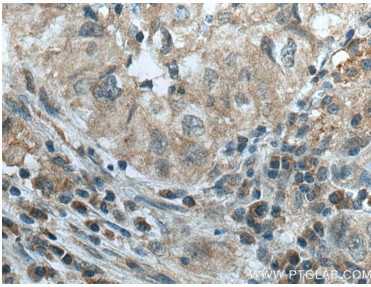
Various lysates were subjected to SDS PAGE followed by western blot with 67178-1-Ig (GPI antibody) at dilution of 1:10000 incubated at room temperature for 1.5 hours.



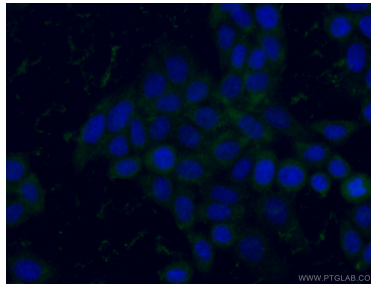
WB result of GPI antibody (67178-1-Ig: 1:20000; incubated at room temperature for 1.5 hours) with sh-Control and sh-GPI transfected HeLa cells.



Immunohistochemical analysis of paraffin-embedded human lung cancer tissue slide using 67178-1-Ig (GPI antibody) at dilution of 1:1000 (under 10x lens). Heat mediated antigen retrieval with Tris-EDTA buffer (pH 9.0).



Immunohistochemical analysis of paraffin-embedded human lung cancer tissue slide using 67178-1-Ig (GPI antibody) at dilution of 1:1000 (under 40x lens). Heat mediated antigen retrieval with Tris-EDTA buffer (pH 9.0).



Immunofluorescent analysis of (-20°C Ethanol) fixed PC-3 cells using 67178-1-Ig (GPI antibody) at dilution of 1:50 and Coralite488-Conjugated AffiniPure Goat Anti-Mouse IgG(H+L).