

Nur für Forschungszwecke

ENO1 Monoklonaler Antikörper

Katalog-Nr.:67187-1-Ig



Allgemeine Informationen

Katalog-Nr.:
67187-1-Ig

Größe:
150ul , Konzentration: 200 µg/ml
durch die Bradford-Methode mit BSA
als Standard;

Wirt:
Maus

Isotyp:
IgM

Immunogen Katalognummer:
AG17518

GenBank-Zugangsnummer:
BC015641

GeneID (NCBI):
2023

Vollständiger Name:
enolase 1, (alpha)

Berechnete Masse:
47 kDa

Beobachtete Masse:
47 kDa

Reinigungsmethode:
Thiophiler Affinitätschromatograph

CloneNo.:
1D6E8

Empfohlene Verdünnungen:
WB 1:5000-1:50000
IF 1:50-1:500

Anwendungen

Geprüfte Anwendungen:
IF, WB, ELISA

Getestete Reaktivität:
Hausschwein, Human, Maus, Ratte

Positivkontrollen:

WB : HEK-293-Zellen, Hausschwein-Hirngewebe, HeLa-Zellen, Jurkat-Zellen, Maushirngewebe, PC-3-Zellen, Rattenhirngewebe

IF : HeLa-Zellen,

Hintergrundinformationen

ENO1, also named as NNE, ENO1L1, MBPB1, MPB1 and MBP1, belongs to the enolase family. ENO1 is a metabolic enzyme involved in the synthesis of pyruvate. It also acts as a plasminogen receptor and mediates the activation of plasmin and extracellular matrix degradation. In tumor cells, ENO1 is up-regulated and supports the Warburg effect; it is expressed at the cell surface, where it promotes cancer invasion, and is subjected to a specific array of post-translational modifications, namely acetylation, methylation and phosphorylation. ENO1 overexpression and post-translational modifications could be of diagnostic and prognostic value in many cancer types. (PMID: 27814656)

Lagerung

Lagerungsbedingungen:

Bei -20°C lagern. Nach dem Versand ein Jahr lang stabil

Lagerungspuffer:

PBS mit 0.02% Natriumazid und 50% Glycerin pH 7.3.

Aliquotieren ist nicht notwendig bei -20°C Lagerung

***** 20ul-Größen enthalten 0.1% BSA**

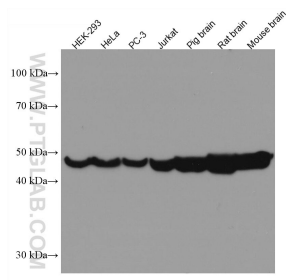
For technical support and original validation data for this product please contact:

T: 1 (888) 4PTGLAB (1-888-478-4522) (toll free
in USA), or 1(312) 455-8498 (outside USA)

E: proteintech@ptglab.com
W: ptglab.com

This product is exclusively available under Proteintech Group brand and is not available to purchase from any other manufacturer.

Ausgewählte Validierungsdaten



Various lysates were subjected to SDS PAGE followed by western blot with 67187-1-Ig (ENO1 antibody) at dilution of 1:10000 incubated at room temperature for 1.5 hours.

Immunofluorescent analysis of (-20°C Ethanol) fixed HeLa cells using ENO1 antibody (67187-1-Ig, Clone: 1D6E8) at dilution of 1:100 and CoraLite®488-Conjugated AffiniPure Goat Anti-Mouse IgG(H+L).