

## Allgemeine Informationen

<b>Katalog-Nr.:</b> 67190-1-Ig	<b>GenBank-Zugangsnummer:</b> BC012999	<b>Reinigungsmethode:</b> Protein-G-Reinigung
<b>Größe:</b> 150ul, Konzentration: 2000 µg/ml von 10112 Nanodrop und 1000 µg/ml durch die Bradford-Methode mit BSA als Standard;	<b>GeneID (NCBI):</b> Kinesin family member 20A	<b>CloneNo.:</b> 2A8E3
<b>Wirt:</b> Maus	<b>Vollständiger Name:</b> Kinesin family member 20A	<b>Empfohlene Verdünnungen:</b> WB 1:5000-1:50000 IHC 1:200-1:800 IF 1:50-1:500
<b>Isotyp:</b> IgG1	<b>Berechnete Masse:</b> 890 aa, 100 kDa	
<b>Immunogen Katalognummer:</b> AG8916	<b>Beobachtete Masse:</b> 100 kDa	

## Anwendungen

<b>Geprüfte Anwendungen:</b> IF, IHC, WB, ELISA	<b>Positivkontrollen:</b>
<b>In Publikationen genannte Anwendungen:</b> IF, WB	<b>WB:</b> HepG2-Zellen, HEK-293-Zellen, HeLa-Zellen, HL-60-Zellen, Jurkat-Zellen, NIH/3T3-Zellen, PC-12-Zellen
<b>Getestete Reaktivität:</b> Human, Maus, Ratte	<b>IHC:</b> humanes Mammakarzinomgewebe, humanes Pankreaskarzinomgewebe
<b>Zitierte Arten:</b> Human	<b>IF:</b> HeLa-Zellen,
<b>Hinweis-IHC: Antigendemaskierung mit TE-Puffer pH 9,0 empfohlen. (*) Wahlweise kann die Antigendemaskierung auch mit Citratpuffer pH 6,0 erfolgen.</b>	

## Hintergrundinformationen

KIF20A, also known as RAB6KIFL or MKlp2, is a kinesin originally identified as a binding partner for the rab6 GTPase involved in protein transport at the Golgi apparatus. KIF20A belongs to a large family of motor proteins that accumulate in mitotic cells and is required for normal cell division. KIF20A is thought to be involved in carcinogenesis. In normal tissues KIF20A is almost undetectable while it is overexpressed in various cancers. KIF20A has been identified as a novel promising candidate for anticancer immunotherapy.

## Bemerkenswerte Veröffentlichungen

Verfasser	Pubmed ID	Journal	Anwendung
Bingteng Xie	35648393	Cancer Res	IF
Seemon Coomar	37171980	Mol Cancer Res	WB

## Lagerung

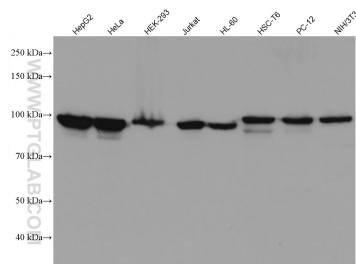
**Lagerungsbedingungen:**  
Bei -20°C lagern.  
**Lagerungspuffer:**  
PBS mit 0.02% Natriumazid und 50% Glycerin pH 7.3.  
Aliquotieren ist nicht notwendig bei -20°C Lagerung

**\*\*\* 20ul-Größen enthalten 0.1% BSA**

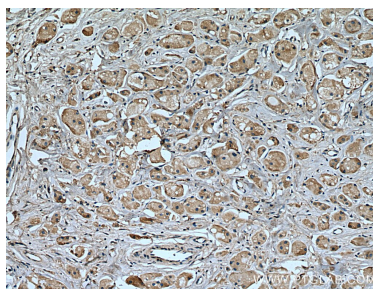
For technical support and original validation data for this product please contact:  
T: 1 (888) 4PTGLAB (1-888-478-4522) (toll free in USA), or 1(312) 455-8498 (outside USA)  
E: [proteintech@ptglab.com](mailto:proteintech@ptglab.com)  
W: [ptglab.com](http://ptglab.com)

This product is exclusively available under Proteintech Group brand and is not available to purchase from any other manufacturer.

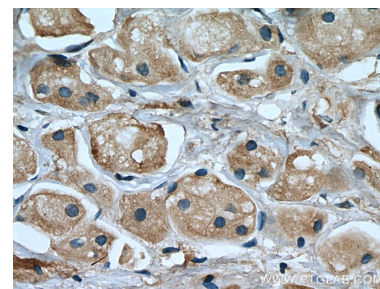
## Ausgewählte Validierungsdaten



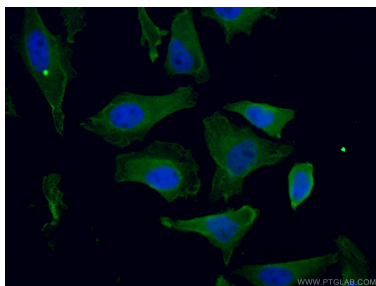
Various lysates were subjected to SDS PAGE followed by western blot with 67190-1-Ig (KIF20A antibody) at dilution of 1:10000 incubated at room temperature for 1.5 hours.



Immunohistochemical analysis of paraffin-embedded human breast cancer tissue slide using 67190-1-Ig (KIF20A antibody) at dilution of 1:400 (under 10x lens). Heat mediated antigen retrieval with Tris-EDTA buffer (pH 9.0).



Immunohistochemical analysis of paraffin-embedded human breast cancer tissue slide using 67190-1-Ig (KIF20A antibody) at dilution of 1:400 (under 40x lens). Heat mediated antigen retrieval with Tris-EDTA buffer (pH 9.0).



Immunofluorescent analysis of (4% PFA) fixed HeLa cells using 67190-1-Ig (KIF20A antibody) at dilution of 1:100 and Coralite488-Conjugated AffiniPure Goat Anti-Mouse IgG(H+L).