

Nur für Forschungszwecke

DCC-Specific Monoklonaler Antikörper



Katalog-Nr.:67203-1-Ig

Allgemeine Informationen

Katalog-Nr.: 67203-1-Ig	GenBank-Zugangsnummer: NML_005215	Reinigungsmethode: Protein-A-Reinigung
Größe: 150ul , Konzentration: 2400 µg/ml von1630 Nanodrop und 1000 µg/ml durch die Bradford-Methode mit BSA als Standard;	GeneID (NCBI): deleted in colorectal carcinoma	CloneNo.: 2G4G4
Wirt: Maus	Vollständiger Name: deleted in colorectal carcinoma	Empfohlene Verdünnungen: WB 1:1000-1:4000
Isotyp: IgG2a	Berechnete Masse: 1447 aa, 158 kDa	
Immunogen Katalognummer: AG20569	Beobachtete Masse: 180 kDa	

Anwendungen

Geprüfte Anwendungen: WB,ELISA	Positivkontrollen: WB : Maushirngewebe,
Getestete Reaktivität: Human, Maus	

Hintergrundinformationen

DCC, also named as IGDC1, belongs to the immunoglobulin superfamily and DCC family. DCC is a receptor for netrin required for axon guidance. DCC plays a key role in the developing nervous system. Its association with UNC5 proteins may trigger signaling for axon repulsion. It also acts as a dependence receptor required for apoptosis induction when not associated with netrin ligand. DCC gene is a tumor suppressor gene. This antibody recognizes endogenous DCC with an apparent molecular weight of 180 kDa. As the predicted molecular mass of DCC is 158 kDa, the slower mobility is likely attributable to post-translational modification, perhaps by glycosylation at potential N-linked glycosylation sites (PMID: 7926722; 8044801).

Lagerung

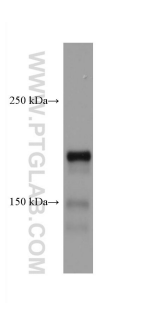
Lagerungsbedingungen:
Bei -20°C lagern.
Lagerungspuffer:
PBS mit 0.02% Natriumazid und 50% Glycerin pH 7.3.
Aliquotieren ist nicht notwendig bei -20°C Lagerung

*** 20ul-Größen enthalten 0.1% BSA

For technical support and original validation data for this product please contact:
T: 1 (888) 4PTGLAB (1-888-478-4522) (toll free in USA), or 1(312) 455-8498 (outside USA)
E: proteintech@ptglab.com
W: ptglab.com

This product is exclusively available under Proteintech Group brand and is not available to purchase from any other manufacturer.

Ausgewählte Validierungsdaten



mouse brain tissue were subjected to SDS PAGE followed by western blot with 67203-1-Ig (DCC-Specific antibody) at dilution of 1:2000 incubated at room temperature for 1.5 hours.