

Nur für Forschungszwecke

SQL E Monoklonaler Antikörper

Katalog-Nr.: 67206-1-Ig



Allgemeine Informationen

Katalog-Nr.: 67206-1-Ig	GenBank-Zugangsnummer: BC017033	Reinigungsmethode: Protein-A-Reinigung
Größe: 150ul, Konzentration: 1000 µg/ml durch die Bradford-Methode mit BSA als Standard;	GeneID (NCBI): 6713	CloneNo.: 1C9A2
Wirt: Maus	Vollständiger Name: squalene epoxidase	Empfohlene Verdünnungen: WB 1:2000-1:10000 IF 1:400-1:1600
Isotyp: IgG2a	Berechnete Masse: 574 aa, 64 kDa	
Immunogen Katalognummer: AG3266	Beobachtete Masse: 50-64 kDa	

Anwendungen

Geprüfte Anwendungen: IF, WB, ELISA	Positivkontrollen: WB : A549-Zellen, HEK-293-Zellen, HepG2-Zellen, L02-Zellen IF : HEK-293-Zellen,
Getestete Reaktivität: Hausschwein, Human, Ratte	

Hintergrundinformationen

SQL E, also named as ERG1, SE and SM, belongs to the squalene monooxygenase family. It catalyzes the first oxygenation step in cholesterol synthesis, acting on squalene before cyclization into the basic steroid structure. SQL E may serve as a flux-controlling enzyme beyond 3-hydroxy-3-methylglutaryl-coenzyme A reductase (HMGR, considered as rate limiting). It is also posttranslationally regulated by cholesterol-dependent proteasomal degradation. SQL E is subject to feedback regulation via cholesterol-induced degradation, which depends on its lipid-sensing N terminal regulatory domain. Truncation of SQL E occurs during its endoplasmic reticulum-associated degradation and requires the proteasome, which partially degrades the SQL E N-terminus and eliminates cholesterol-sensing elements within this region. The MW of SQL E is about 50-64 kDa. (PMID:21356516, PMID:28972164)

Lagerung

Lagerungsbedingungen:
Bei -20°C lagern. Nach dem Versand ein Jahr lang stabil
Lagerungspuffer:
PBS mit 0.02% Natriumazid und 50% Glycerin pH 7.3.
Aliquotieren ist nicht notwendig bei -20°C Lagerung

***** 20ul-Größen enthalten 0.1% BSA**

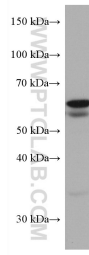
For technical support and original validation data for this product please contact:

T: 1 (888) 4PTGLAB (1-888-478-4522) (toll free
in USA), or 1(312) 455-8498 (outside USA)

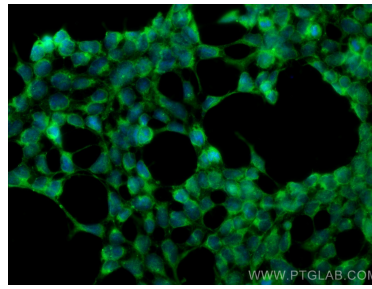
E: proteintech@ptglab.com
W: ptglab.com

This product is exclusively available under Proteintech Group brand and is not available to purchase from any other manufacturer.

Ausgewählte Validierungsdaten



A549 cells were subjected to SDS PAGE followed by western blot with 67206-1-Ig (SQLE antibody) at dilution of 1:5000 incubated at room temperature for 1.5 hours.



Immunofluorescent analysis of (-20°C Ethanol) fixed HEK-293 cells using SQLE antibody (67206-1-Ig, Clone: 1C9A2) at dilution of 1:400 and CoraLite®488-Conjugated AffiniPure Goat Anti-Mouse IgG(H+L).