

Nur für Forschungszwecke

CDC42 Monoklonaler Antikörper

Katalog-Nr.:67212-1-Ig



Allgemeine Informationen

Katalog-Nr.: 67212-1-Ig	GenBank-Zugangsnummer: BC002711	Reinigungsmethode: Caprylsäure/Ammoniumsulfat-Präzipitation
Größe: 150ul , Konzentration: 1000 µg/ml durch die Bradford-Methode mit BSA als Standard;	GeneID (NCBI): 998	CloneNo.: 2G5E8
Wirt: Maus	Vollständiger Name: cell division cycle 42 (GTP binding protein, 25kDa)	Empfohlene Verdünnungen: WB 1:5000-1:20000
Isotyp: IgM	Berechnete Masse: 21 kDa	
Immunogen Katalognummer: AG28550	Beobachtete Masse: 21 kDa	

Anwendungen

Geprüfte Anwendungen: WB, ELISA	Positivkontrollen: WB : HeLa-Zellen, HEK-293-Zellen, Jurkat-Zellen, Maus-Cerebellum-Gewebe, Maushirngewebe, MCF-7-Zellen, NIH/3T3-Zellen, Rattenhirngewebe
Getestete Reaktivität: Human, Maus, Ratte	

Hintergrundinformationen

Cdc42, the human homologue of the cell division cycle 42 of *Saccharomyces cerevisiae*, belongs to the Rho/Rac subfamily of Ras-like GTPases. It acts as molecular switches to regulate numerous cellular responses including the organization of the actin cytoskeleton, gene transcription, cell cycle progression, and membrane trafficking

Lagerung

Lagerungsbedingungen:
Bei -20°C lagern. Nach dem Versand ein Jahr lang stabil
Lagerungspuffer:
PBS with 0.1% sodium azide and 50% glycerol pH 7.3.
Aliquotieren ist nicht notwendig bei -20°C Lagerung

*** 20ul-Größen enthalten 0.1% BSA

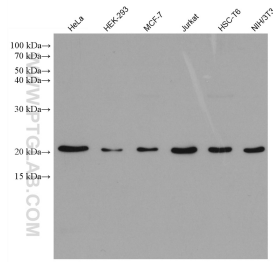
For technical support and original validation data for this product please contact:

T: 1 (888) 4PTGLAB (1-888-478-4522) (toll free in USA), or 1(312) 455-8498 (outside USA)

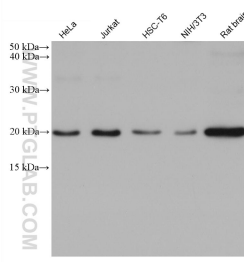
E: proteintech@ptglab.com
W: ptglab.com

This product is exclusively available under Proteintech Group brand and is not available to purchase from any other manufacturer.

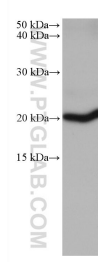
Ausgewählte Validierungsdaten



Various lysates were subjected to SDS PAGE followed by western blot with 67212-1-Ig (CDC42 antibody) at dilution of 1:10000 incubated at room temperature for 1.5 hours.



Various lysates were subjected to SDS PAGE followed by western blot with 67212-1-Ig (CDC42 antibody) at dilution of 1:5000 incubated at room temperature for 1.5 hours.



mouse cerebellum tissue were subjected to SDS PAGE followed by western blot with 67212-1-Ig (CDC42 antibody) at dilution of 1:5000 incubated at room temperature for 1.5 hours.