

Nur für Forschungszwecke

# BCAR1 Monoklonaler Antikörper

Katalog-Nr.: 67215-1-Ig **2 Publikationen**



## Allgemeine Informationen

<b>Katalog-Nr.:</b> 67215-1-Ig	<b>GenBank-Zugangsnummer:</b> BC062556	<b>Reinigungsmethode:</b> Protein-A-Reinigung
<b>Größe:</b> 150ul, Konzentration: 2028 µg/ml von 9564 Nanodrop und 1000 µg/ml durch die Bradford-Methode mit BSA als Standard;	<b>GeneID (NCBI):</b> 9564	<b>CloneNo.:</b> 2D11C10
<b>Wirt:</b> Maus	<b>Vollständiger Name:</b> breast cancer anti-estrogen resistance 1	<b>Empfohlene Verdünnungen:</b> WB 1:2000-1:10000 IHC 1:250-1:1000 IF 1:200-1:800
<b>Isotyp:</b> IgG2a	<b>Berechnete Masse:</b> 870 aa, 93 kDa	
<b>Immunogen Katalognummer:</b> AG10604	<b>Beobachtete Masse:</b> 116 kDa	

## Anwendungen

<b>Geprüfte Anwendungen:</b> FC, IF, IHC, WB, ELISA	<b>Positivkontrollen:</b> WB : HEK-293-Zellen, A431-Zellen, HeLa-Zellen, MCF-7-Zellen, MDA-MB-453s-Zellen, T-47D-Zellen IHC : humanes Mammakarzinomgewebe, humanes Kolonkarzinomgewebe IF : humanes Mammakarzinomgewebe,
<b>In Publikationen genannte Anwendungen:</b> IF, WB	
<b>Getestete Reaktivität:</b> Human	
<b>Zitierte Arten:</b> Human	
<b>Hinweis-IHC: Antigendemaskierung mit TE-Puffer pH 9,0 empfohlen. (*) Wahlweise kann die Antigendemaskierung auch mit Citratpuffer pH 6,0 erfolgen.</b>	

## Hintergrundinformationen

### Bemerkenswerte Veröffentlichungen

Verfasser	Pubmed ID	Journal	Anwendung
Tingting Hu	35360840	Front Genet	WB
Liyang Wu	34956399	Comput Math Methods Med	IF

## Lagerung

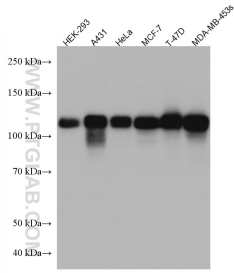
**Lagerungsbedingungen:**  
Bei -20°C lagern.  
**Lagerungspuffer:**  
PBS mit 0.02% Natriumazid und 50% Glycerin pH 7.3.  
Aliquotieren ist nicht notwendig bei -20°C Lagerung

\*\*\* 20ul-Größen enthalten 0.1% BSA

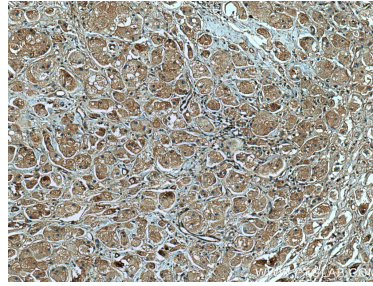
For technical support and original validation data for this product please contact:  
T: 1 (888) 4PTGLAB (1-888-478-4522) (toll free in USA), or 1(312) 455-8498 (outside USA)  
E: proteintech@ptglab.com  
W: ptglab.com

This product is exclusively available under Proteintech Group brand and is not available to purchase from any other manufacturer.

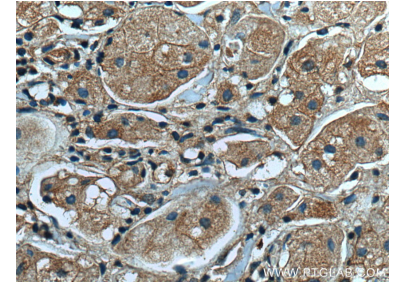
## Ausgewählte Validierungsdaten



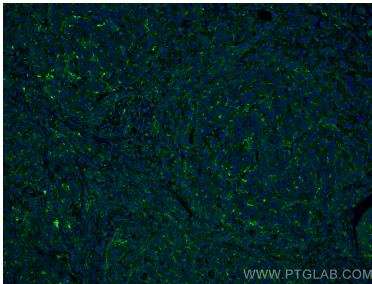
Various lysates were subjected to SDS PAGE followed by western blot with 67215-1-Ig (BCAR1 antibody) at dilution of 1:5000 incubated at room temperature for 1.5 hours.



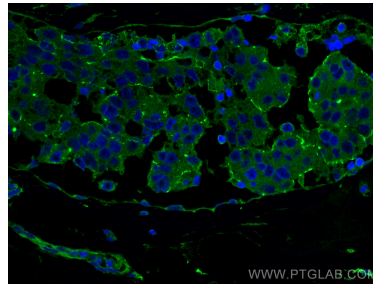
Immunohistochemical analysis of paraffin-embedded human breast cancer tissue slide using 67215-1-Ig (BCAR1 antibody) at dilution of 1:500 (under 10x lens). Heat mediated antigen retrieval with Tris-EDTA buffer (pH 9.0).



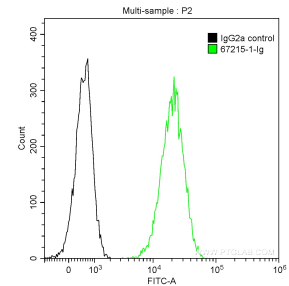
Immunohistochemical analysis of paraffin-embedded human breast cancer tissue slide using 67215-1-Ig (BCAR1 antibody) at dilution of 1:500 (under 40x lens). Heat mediated antigen retrieval with Tris-EDTA buffer (pH 9.0).



Immunofluorescent analysis of (4% PFA) fixed human breast cancer tissue using BCAR1 antibody (67215-1-Ig, Clone: 2D11C10) at dilution of 1:400 and CoraLite@488-Conjugated AffiniPure Goat Anti-Mouse IgG(H+L).



Immunofluorescent analysis of (4% PFA) fixed human breast cancer tissue using BCAR1 antibody (67215-1-Ig, Clone: 2D11C10) at dilution of 1:400 and CoraLite@488-Conjugated AffiniPure Goat Anti-Mouse IgG(H+L).



$1 \times 10^6$  A431 cells were intracellularly stained with 0.2 ug Anti-Human BCAR1 (67215-1-Ig, Clone:2D11C10) and CoraLite@488-Conjugated AffiniPure Goat Anti-Mouse IgG(H+L) at dilution 1:1000 (green), and 0.2 ug Control Antibody. Cells were fixed with 90% MeOH.