

Allgemeine Informationen

Katalog-Nr.: 67216-1-Ig	GenBank-Zugangsnummer: BC001890	Reinigungsmethode: Protein-G-Reinigung
Größe: 150ul , Konzentration: 1600 µg/ml von2645 Nanodrop und 1000 µg/ml durch die Bradford-Methode mit BSA als Standard;	GeneID (NCBI): Vollständiger Name: glucokinase (hexokinase 4)	CloneNo.: 1C3A3
Wirt: Maus	Berechnete Masse: 52 kDa	Empfohlene Verdünnungen: WB 1:5000-1:20000 IHC 1:300-1:1000 IF 1:200-1:800
Isotyp: IgG1	Beobachtete Masse: 52 kDa	
Immunogen Katalognummer: AG8116		

Anwendungen

Geprüfte Anwendungen: IF, IHC, WB, ELISA	Positivkontrollen: WB : Hausschwein-Lebergewebe, HepG2-Zellen, L02-Zellen, Mauslebergewebe, Rattenlebergewebe, SMMC-7721-Zellen
In Publikationen genannte Anwendungen: WB	IHC : humanes Leberkarzinomgewebe, IF : humanes Leberkarzinomgewebe,
Getestete Reaktivität: Hausschwein, Human, Maus, Ratte	
Zitierte Arten: Human, Maus	
Hinweis-IHC: Antigenmaskierung mit TE-Puffer pH 9,0 empfohlen. (*) Wahlweise kann die Antigenmaskierung auch mit Citratpuffer pH 6,0 erfolgen.	

Hintergrundinformationen

Glucokinase (GCK) is a structurally and functionally unique member of hexokinase family. It is expressed only in mammalian liver and pancreatic islet beta cells. Because of its unique functional characteristics, the enzyme plays an important regulatory role in glucose metabolism. The rate of glucose metabolism in liver and pancreas is a function of the activity of the enzyme (PMID:1740341). Moreover, GCK has been found to have relationship with diabetes. Defects in GCK are the cause of maturity-onset diabetes of the young type 2 (MODY2) and familial hyperinsulinemic hypoglycemia type 3 (HHF3). It has 3 isoforms produced by alternative splicing with the same molecular mass of 52 kDa.

Bemerkenswerte Veröffentlichungen

Verfasser	Pubmed ID	Journal	Anwendung
Sa Yang	35873595	Front Pharmacol	WB

Lagerung

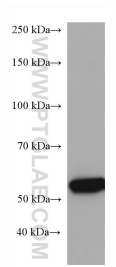
Lagerungsbedingungen:
Bei -20°C lagern.
Lagerungspuffer:
PBS mit 0.02% Natriumazid und 50% Glycerin pH 7.3.
Aliquotieren ist nicht notwendig bei -20°C Lagerung

***** 20ul-Größen enthalten 0.1% BSA**

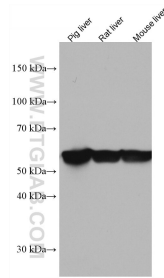
For technical support and original validation data for this product please contact:
 T: 1 (888) 4PTGLAB (1-888-478-4522) (toll free in USA), or 1(312) 455-8498 (outside USA)
 E: proteintech@ptglab.com
 W: ptglab.com

This product is exclusively available under Proteintech Group brand and is not available to purchase from any other manufacturer.

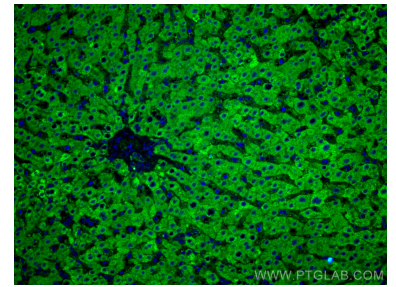
Ausgewählte Validierungsdaten



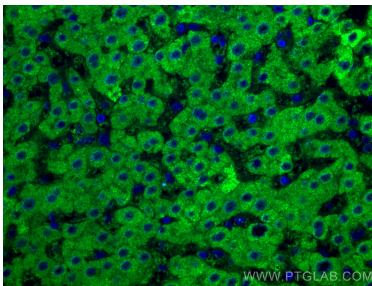
pig liver tissue were subjected to SDS PAGE followed by western blot with 67216-1-Ig (GCK antibody) at dilution of 1:10000 incubated at room temperature for 1.5 hours.



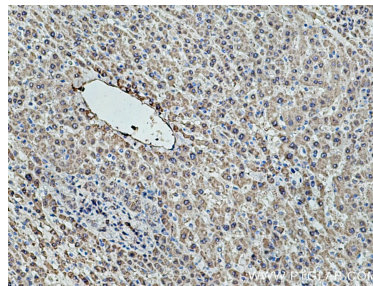
pig liver tissue were subjected to SDS PAGE followed by western blot with 67216-1-Ig (GCK antibody) at dilution of 1:3000 incubated at room temperature for 1.5 hours.



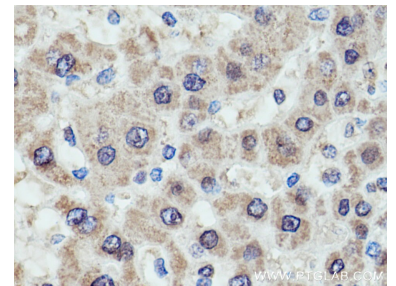
Immunofluorescent analysis of (4% PFA) fixed human liver cancer tissue using GCK antibody (67216-1-Ig, Clone: 1C3A3) at dilution of 1:400 and CoraLite®488-Conjugated AffiniPure Goat Anti-Mouse IgG(H+L).



Immunofluorescent analysis of (4% PFA) fixed human liver cancer tissue using GCK antibody (67216-1-Ig, Clone: 1C3A3) at dilution of 1:400 and CoraLite®488-Conjugated AffiniPure Goat Anti-Mouse IgG(H+L).



Immunohistochemical analysis of paraffin-embedded human liver cancer tissue slide using 67216-1-Ig (GCK antibody) at dilution of 1:600 (under 10x lens). Heat mediated antigen retrieval with Tris-EDTA buffer (pH 9.0).



Immunohistochemical analysis of paraffin-embedded human liver cancer tissue slide using 67216-1-Ig (GCK antibody) at dilution of 1:600 (under 40x lens). Heat mediated antigen retrieval with Tris-EDTA buffer (pH 9.0).