

Nur für Forschungszwecke

SLC31A1 Monoklonaler Antikörper

Katalog-Nr.:67221-1-Ig

Vorgestelltes Produkt

2 Publikationen



Allgemeine Informationen

Katalog-Nr.: 67221-1-Ig	GenBank-Zugangsnummer: BC013611	Reinigungsmethode: Protein-A-Reinigung
Größe: 150ul , Konzentration: 2500 µg/ml von1317 Nanodrop und 1000 µg/ml durch die Bradford-Methode mit BSA als Standard;	GeneID (NCBI): 150000000	CloneNo.: 1A4H5
Wirt: Maus	Vollständiger Name: solute carrier family 31 (copper transporters), member 1	Empfohlene Verdünnungen: WB 1:5000-1:20000 IHC 1:1000-1:4000 IF 1:50-1:500
Isotyp: IgG2b	Berechnete Masse: 21 kDa	
Immunogen Katalognummer: AG28410	Beobachtete Masse: 32 kDa	

Anwendungen

Geprüfte Anwendungen: FC, IF, IHC, WB, ELISA	Positivkontrollen: WB : HepG2-Zellen, HeLa-Zellen
In Publikationen genannte Anwendungen: IHC, WB	IHC : humanes Leberkarzinomgewebe, IF : humanes Leberkarzinomgewebe,
Getestete Reaktivität: Human	
Zitierte Arten: Human	
Hinweis-IHC: Antigenmaskierung mit TE-Puffer pH 9,0 empfohlen. (*) Wahlweise kann die Antigenmaskierung auch mit Citratpuffer pH 6,0 erfolgen.	

Hintergrundinformationen

Bemerkenswerte Veröffentlichungen

Verfasser	Pubmed ID	Journal	Anwendung
Sandrine Tury	35652657	J Virol	WB
Qingyuan Lin	37091865	Front Mol Biosci	IHC

Lagerung

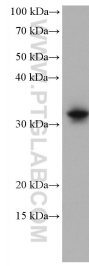
Lagerungsbedingungen:
Bei -20°C lagern. Nach dem Versand ein Jahr lang stabil
Lagerungspuffer:
PBS mit 0.02% Natriumazid und 50% Glycerin pH 7.3.
Aliquotieren ist nicht notwendig bei -20°C Lagerung

*** 20ul-Größen enthalten 0.1% BSA

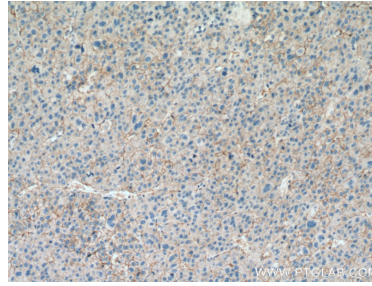
For technical support and original validation data for this product please contact:
T: 1 (888) 4PTGLAB (1-888-478-4522) (toll free in USA), or 1(312) 455-8498 (outside USA)
E: proteintech@ptglab.com
W: ptglab.com

This product is exclusively available under Proteintech Group brand and is not available to purchase from any other manufacturer.

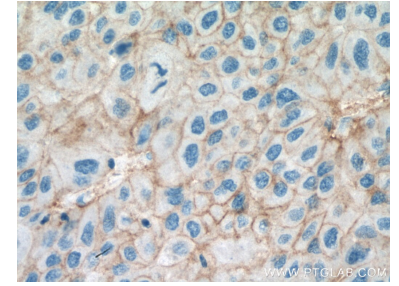
Ausgewählte Validierungsdaten



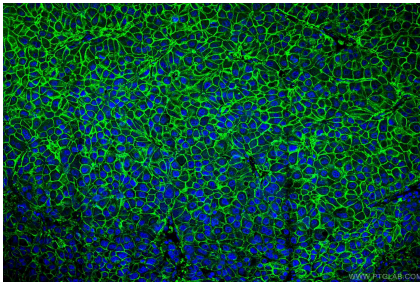
HepG2 cells were subjected to SDS PAGE followed by western blot with 67221-1-Ig (SLC31A1 antibody) at dilution of 1:20000 incubated at room temperature for 1.5 hours.



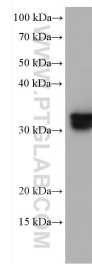
Immunohistochemical analysis of paraffin-embedded human liver cancer tissue slide using 67221-1-Ig (SLC31A1 antibody) at dilution of 1:2000 (under 10x lens). Heat mediated antigen retrieval with Tris-EDTA buffer (pH 9.0).



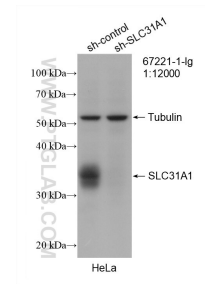
Immunohistochemical analysis of paraffin-embedded human liver cancer tissue slide using 67221-1-Ig (SLC31A1 antibody) at dilution of 1:2000 (under 40x lens). Heat mediated antigen retrieval with Tris-EDTA buffer (pH 9.0).



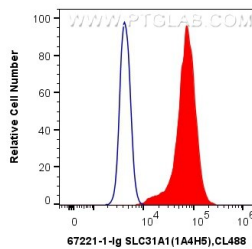
Immunofluorescent analysis of (4% PFA) fixed human liver cancer tissue using 67221-1-Ig (SLC31A1 antibody) at dilution of 1:100 and CoraLite488-Conjugated AffiniPure Goat Anti-Mouse IgG(H+L).



HeLa cells were subjected to SDS PAGE followed by western blot with 67221-1-Ig (SLC31A1 antibody) at dilution of 1:20000 incubated at room temperature for 1.5 hours.



WB result of SLC31A1 antibody (67221-1-Ig; 1:12000; incubated at room temperature for 1.5 hours) with sh-Control and sh-SLC31A1 transfected HeLa cells.



1×10^6 HeLa cells were intracellularly stained with 0.4 ug Anti-Human SLC31A1 (67221-1-Ig, Clone:1A4H5) and CoraLite[®]488-Conjugated AffiniPure Goat Anti-Mouse IgG(H+L) at dilution 1:1000 (red), or 0.4 ug Control Antibody. Cells were fixed with 4% PFA and permeabilized with Flow Cytometry Perm Buffer (PF00011-C).