

Nur für Forschungszwecke

RPL17 Monoklonaler Antikörper

Katalog-Nr.: 67223-1-Ig **2 Publikationen**



Allgemeine Informationen

Katalog-Nr.: 67223-1-Ig	GenBank-Zugangsnummer: BC066323	Reinigungsmethode: Protein-G-Reinigung
Größe: 150ul, Konzentration: 1800 µg/ml von 6139 Nanodrop und 1000 µg/ml durch die Bradford-Methode mit BSA als Standard;	GeneID (NCBI): 6139	CloneNo.: 1C5E6
Wirt: Maus	Vollständiger Name: ribosomal protein L17	Empfohlene Verdünnungen: WB 1:5000-1:50000 IHC 1:250-1:1000 IF 1:50-1:500
Isotyp: IgG1	Berechnete Masse: 21 kDa	
Immunogen Katalognummer: AG5393	Beobachtete Masse: 20-23 kDa	

Anwendungen

Geprüfte Anwendungen: IF, IHC, WB, ELISA	Positivkontrollen: WB : HeLa-Zellen, 4T1-Zellen, HEK-293-Zellen, HepG2-Zellen, Jurkat-Zellen, NIH/3T3-Zellen IHC : humanes Pankreaskarzinomgewebe, IF : HepG2-Zellen,
In Publikationen genannte Anwendungen: IHC, WB	
Getestete Reaktivität: Human, Maus, Ratte	
Zitierte Arten: Human, Ratte	
Hinweis-IHC: Antigenmaskierung mit TE-Puffer pH 9,0 empfohlen. (*) Wahlweise kann die Antigenmaskierung auch mit Citratpuffer pH 6,0 erfolgen.	

Hintergrundinformationen

Ribosomes, the organelles that catalyze protein synthesis, consist of a small 40S subunit and a large 60S subunit. Together these subunits are composed of 4 RNA species and approximately 80 structurally distinct proteins. RPL17 gene encodes a ribosomal protein that is a component of the 60S subunit belonging to the L22P family of ribosomal proteins. It is located in the cytoplasm. This gene has been referred to as rpl23 because the encoded protein shares amino acid identity with ribosomal protein L23 from Halobacterium marismortui; however, its official symbol is RPL17.

Bemerkenswerte Veröffentlichungen

Verfasser	Pubmed ID	Journal	Anwendung
Zhenyuan Wei	35615641	J Orthop Translat	WB,IHC
Magdalena Wolczyk	37123244	iScience	WB

Lagerung

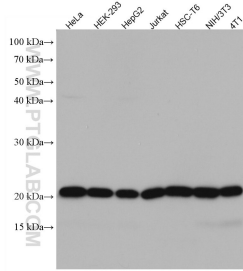
Lagerungsbedingungen:
Bei -20°C lagern. Nach dem Versand ein Jahr lang stabil
Lagerungspuffer:
PBS mit 0.02% Natriumazid und 50% Glycerin pH 7.3.
Aliquotieren ist nicht notwendig bei -20°C Lagerung

*** 20ul-Größen enthalten 0.1% BSA

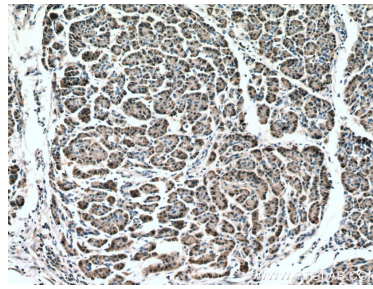
For technical support and original validation data for this product please contact:
T: 1 (888) 4PTGLAB (1-888-478-4522) (toll free in USA), or 1(312) 455-8498 (outside USA)
E: proteintech@ptglab.com
W: ptglab.com

This product is exclusively available under Proteintech Group brand and is not available to purchase from any other manufacturer.

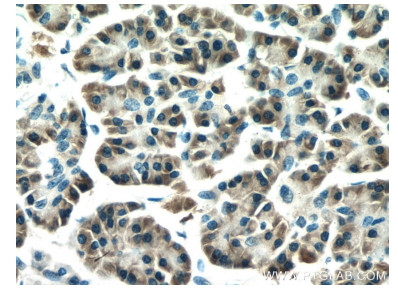
Ausgewählte Validierungsdaten



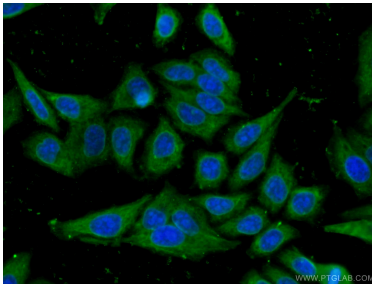
Various lysates were subjected to SDS PAGE followed by western blot with 67223-1-Ig (RPL17 antibody) at dilution of 1:10000 incubated at room temperature for 1.5 hours.



Immunohistochemical analysis of paraffin-embedded human pancreas cancer tissue slide using 67223-1-Ig (RPL17 antibody) at dilution of 1:500 (under 10x lens). Heat mediated antigen retrieval with Tris-EDTA buffer (pH 9.0).



Immunohistochemical analysis of paraffin-embedded human pancreas cancer tissue slide using 67223-1-Ig (RPL17 antibody) at dilution of 1:500 (under 40x lens). Heat mediated antigen retrieval with Tris-EDTA buffer (pH 9.0).



Immunofluorescent analysis of (-20°C Ethanol) fixed HepG2 cells using 67223-1-Ig (RPL17 antibody) at dilution of 1:100 and CoraLite488-Conjugated AffiniPure Goat Anti-Mouse IgG(H+L).