

Nur für Forschungszwecke

# CDC27; APC3 Monoklonaler Antikörper

Katalog-Nr.:67239-1-Ig



## Allgemeine Informationen

|  |  |   |
|--|--|---|
| <b>Katalog-Nr.:</b><br>67239-1-Ig  | <b>GenBank-Zugangsnummer:</b><br>BC011656                                    | <b>Reinigungsmethode:</b><br>Protein-A-Reinigung  |
| <b>Größe:</b><br>150ul , Konzentration: 2075 µg/ml von996 Nanodrop und 1000 µg/ml durch die Bradford-Methode mit BSA als Standard; | <b>GeneID (NCBI):</b><br>2F10G2  | <b>CloneNo.:</b><br>2F10G2  |
| <b>Wirt:</b><br>Maus   | <b>Vollständiger Name:</b><br>cell division cycle 27 homolog (S. cerevisiae) | <b>Empfohlene Verdünnungen:</b><br>WB 1:5000-1:50000<br>IHC 1:2500-1:10000<br>IF 1:50-1:500 |
| <b>Isotyp:</b><br>IgG2b  | <b>Berechnete Masse:</b><br>92 kDa   |   |
| <b>Immunogen Katalognummer:</b><br>AG25588   | <b>Beobachtete Masse:</b><br>90-100 kDa                                      |   |

## Anwendungen

|   |   |
|---|---|
| <b>Geprüfte Anwendungen:</b><br>FC, IF, IHC, WB, ELISA  | <b>Positivkontrollen:</b><br>WB : Jurkat-Zellen, 4T1-Zellen, HEK-293-Zellen<br>IHC : humanes Lungenkarzinomgewebe,<br>IF : HEK-293-Zellen, humanes Lungenkarzinomgewebe |
| <b>Getestete Reaktivität:</b><br>Human, Maus, Ratte   |   |
| <b>Hinweis-IHC: Antigenmaskierung mit TE-Puffer pH 9,0 empfohlen. (*) Wahlweise kann die Antigenmaskierung auch mit Citratpuffer pH 6,0 erfolgen.</b> |   |

## Hintergrundinformationen

CDC27/APC3 is a component of the anaphase-promoting complex (APC/cyclosome), which is composed of eight subunits and highly conserved in eukaryotic cells. The APC/cyclosome complex acts as a cell cycle-regulated E3 ubiquitin ligase which mediates ubiquitination and subsequent degradation of target proteins, and lead to the progression control through mitosis and the G1 phase of the cell cycle.

## Lagerung

**Lagerungsbedingungen:**  
Bei -20°C lagern. Nach dem Versand ein Jahr lang stabil  
**Lagerungspuffer:**  
PBS mit 0.02% Natriumazid und 50% Glycerin pH 7.3.  
Aliquotieren ist nicht notwendig bei -20°C Lagerung

\*\*\* 20ul-Größen enthalten 0.1% BSA

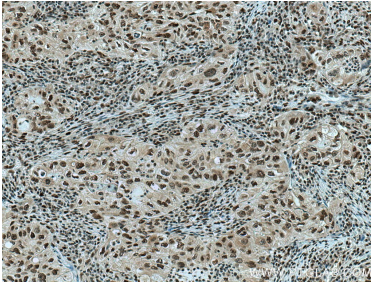
For technical support and original validation data for this product please contact:

T: 1 (888) 4PTGLAB (1-888-478-4522) (toll free in USA), or 1(312) 455-8498 (outside USA)

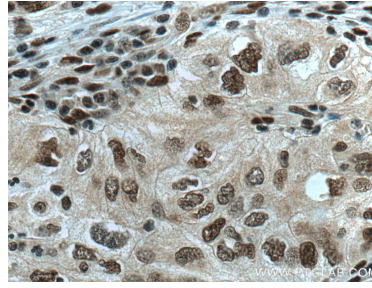
E: proteintech@ptglab.com  
W: ptglab.com

This product is exclusively available under Proteintech Group brand and is not available to purchase from any other manufacturer.

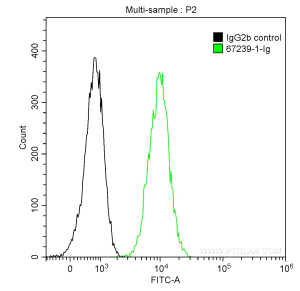
## Ausgewählte Validierungsdaten



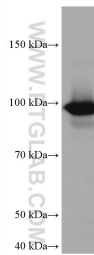
Immunohistochemical analysis of paraffin-embedded human lung cancer tissue slide using 67239-1-Ig (CDC27; APC3 antibody) at dilution of 1:5000 (under 10x lens). Heat mediated antigen retrieval with Tris-EDTA buffer (pH 9.0).



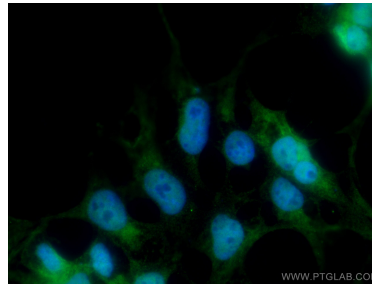
Immunohistochemical analysis of paraffin-embedded human lung cancer tissue slide using 67239-1-Ig (CDC27; APC3 antibody) at dilution of 1:5000 (under 40x lens). Heat mediated antigen retrieval with Tris-EDTA buffer (pH 9.0).



1X10<sup>6</sup> K-562 cells were intracellularly stained with 0.2 ug Anti-Human CDC27; APC3 (67239-1-Ig, Clone: 2F10G2) and Coralite®488-Conjugated AffiniPure Goat Anti-Mouse IgG(H+L) at dilution 1:1000 (green), and 0.2 ug Control Antibody. Cells were fixed with 90% MeOH.



Jurkat cells were subjected to SDS PAGE followed by western blot with 67239-1-Ig (CDC27; APC3 antibody) at dilution of 1:20000 incubated at room temperature for 1.5 hours.



Immunofluorescent analysis of (4% PFA) fixed HEK-293 cells using CDC27; APC3 antibody (67239-1-Ig, Clone: 2F10G2) at dilution of 1:200 and Coralite®488-Conjugated AffiniPure Goat Anti-Mouse IgG(H+L).