

Allgemeine Informationen

Katalog-Nr.: 67243-1-Ig	GenBank-Zugangsnummer: BC150634	Reinigungsmethode: Protein-A-Reinigung
Größe: 150ul , Konzentration: 2000 µg/ml von4628 Nanodrop und 1000 µg/ml durch die Bradford-Methode mit BSA als Standard;	GeneID (NCBI): myosin, heavy chain 10, non-muscle	CloneNo.: 2H8G7
Wirt: Maus	Berechnete Masse: 1985 aa, 230 kDa	Empfohlene Verdünnungen: WB 1:1000-1:6000 IHC 1:150-1:600 IF 1:200-1:800
Isotyp: IgG2a	Beobachtete Masse: 200-230 kDa	
Immunogen Katalognummer: AG17069		

Anwendungen

Geprüfte Anwendungen:

IF, IHC, WB,ELISA

Getestete Reaktivität:

Human, Maus, Ratte

Hinweis-IHC: Antigendemaskierung mit TE-Puffer pH 9,0 empfohlen. (*) Wahlweise kann die Antigendemaskierung auch mit Citratpuffer pH 6,0 erfolgen.

Positivkontrollen:

WB : Maushirngewebe, Maus-Cerebellum-Gewebe, Ratten-Cerebellum-Gewebe, Rattenhirngewebe

IHC : Maus-Cerebellum-Gewebe,

IF : Maus-Cerebellum-Gewebe,

Hintergrundinformationen

MYH10 (non-muscle II-b, NM IIB) is a member of non-muscle myosin II which plays fundamental roles in the maintenance of cell morphology, cell adhesion, and migration, as well as cell division. MYH10 is mainly present in nerve cells, megakaryocytes, and other non-muscle cells. It has been reported to mediate centrosome reorientation during cell migration and contribute to ciliogenesis. Overexpression of MYH10 has been observed in breast cancer.

Lagerung

Lagerungsbedingungen:

Bei -20°C lagern.

Lagerungspuffer:

PBS mit 0.02% Natriumazid und 50% Glycerin pH 7.3.

Aliquotieren ist nicht notwendig bei -20°C Lagerung

***** 20ul-Größen enthalten 0.1% BSA**

For technical support and original validation data for this product please contact:

T: 1 (888) 4PTGLAB (1-888-478-4522) (toll free in USA), or 1(312) 455-8498 (outside USA)

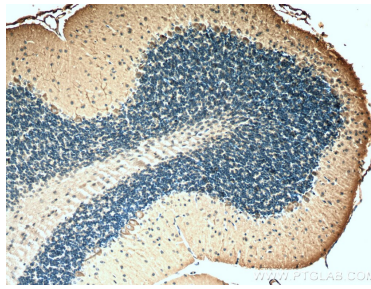
E: proteintech@ptglab.com
W: ptglab.com

This product is exclusively available under Proteintech Group brand and is not available to purchase from any other manufacturer.

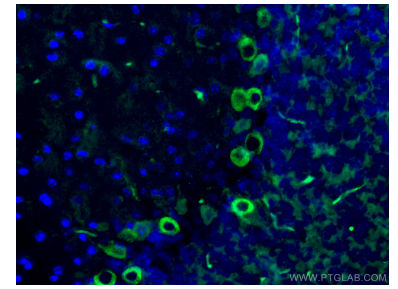
Ausgewählte Validierungsdaten



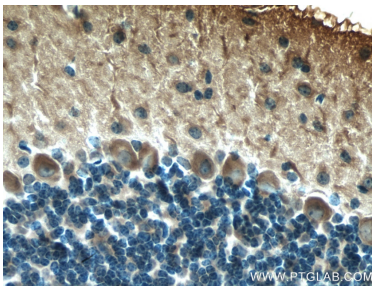
mouse brain tissue were subjected to SDS PAGE followed by western blot with 67243-1-Ig (MYH10 antibody) at dilution of 1:3000 incubated at room temperature for 1.5 hours.



Immunohistochemical analysis of paraffin-embedded mouse cerebellum tissue slide using 67243-1-Ig (MYH10 antibody) at dilution of 1:300 (under 10x lens). Heat mediated antigen retrieval with Tris-EDTA buffer (pH 9.0).



Immunofluorescent analysis of (4% PFA) fixed mouse cerebellum tissue using MYH10 antibody (67243-1-Ig, Clone: 2H8G7) at dilution of 1:400 and CoraLite®488-Conjugated AffiniPure Goat Anti-Mouse IgG(H+L).



Immunohistochemical analysis of paraffin-embedded mouse cerebellum tissue slide using 67243-1-Ig (MYH10 antibody) at dilution of 1:300 (under 40x lens). Heat mediated antigen retrieval with Tris-EDTA buffer (pH 9.0).