

Nur für Forschungszwecke

# FUCA1 Monoklonaler Antikörper

Katalog-Nr.:67251-1-Ig



## Allgemeine Informationen

<b>Katalog-Nr.:</b> 67251-1-Ig	<b>GenBank-Zugangsnummer:</b> BC017338	<b>Reinigungsmethode:</b> Protein-A-Reinigung
<b>Größe:</b> 150ul , Konzentration: 2100 µg/ml von2517 Nanodrop und 1000 µg/ml durch die Bradford-Methode mit BSA als Standard;	<b>GeneID (NCBI):</b> von2517	<b>CloneNo.:</b> 1G5C5
<b>Wirt:</b> Maus	<b>Vollständiger Name:</b> fucosidase, alpha-L- 1, tissue	<b>Empfohlene Verdünnungen:</b> WB 1:2000-1:10000 IHC 1:250-1:1000 IF 1:200-1:800
<b>Isotyp:</b> IgG2b	<b>Berechnete Masse:</b> 461 aa, 53 kDa	
<b>Immunogen Katalognummer:</b> AG9638	<b>Beobachtete Masse:</b> 50-56 kDa	

## Anwendungen

<b>Geprüfte Anwendungen:</b> IF, IHC, WB,ELISA	<b>Positivkontrollen:</b>
<b>Getestete Reaktivität:</b> Human, Maus	<b>WB :</b> HepG2-Zellen, HEK-293-Zellen, K-562-Zellen, NIH/3T3-Zellen
<b>Hinweis-IHC: Antigenmaskierung mit TE-Puffer pH 9,0 empfohlen. (*) Wahlweise kann die Antigenmaskierung auch mit Citratpuffer pH 6,0 erfolgen.</b>	<b>IHC :</b> humanes Leberkarzinomgewebe, <b>IF :</b> humanes Leberkarzinomgewebe,

## Hintergrundinformationen

FUCA1(a-L-Fucosidase) is a lysosomal glycosidase which is ubiquitous in eukaryotic cells. This enzyme is usually found as a soluble component of the lysosome and functions as an acid hydrolase in the degradation of numerous and diverse fucoglycoconjugates. The mammalian a-L-fucosidases are relatively large, multisubunit glycoproteins which exist in multiple molecular isoforms. This enzyme may have a role in sperm-egg interactions in the reproductive tract of the female rat. There is a precursor 54 kDa form of rat sperm fucosidase which is processed to a mature 52 kDa form of the enzyme (PMID:8836125). This protein from rat epididymis is a tetramer of 210-220 kDa, made up by two pairs of subunits of 47 and 60 kDa, and the one from human seminal plasma exists in different oligomeric forms, that is, as a dimer, as a tetramer, and as a hexamer made up of a single subunit of 56-57 kDa (PMID:16736526).

## Lagerung

**Lagerungsbedingungen:**  
Bei -20°C lagern.  
**Lagerungspuffer:**  
PBS mit 0.02% Natriumazid und 50% Glycerin pH 7.3.  
**Aliquotieren ist nicht notwendig bei -20°C Lagerung**

\*\*\* 20ul-Größen enthalten 0.1% BSA

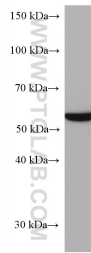
For technical support and original validation data for this product please contact:

T: 1 (888) 4PTGLAB (1-888-478-4522) (toll free  
in USA), or 1(312) 455-8498 (outside USA)

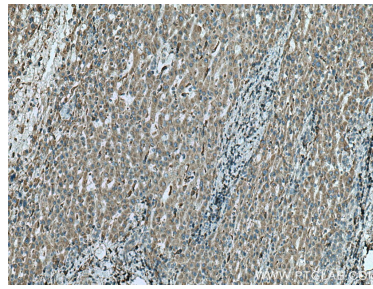
E: proteintech@ptglab.com  
W: ptglab.com

This product is exclusively available under Proteintech Group brand and is not available to purchase from any other manufacturer.

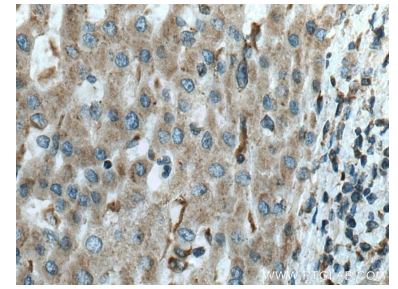
## Ausgewählte Validierungsdaten



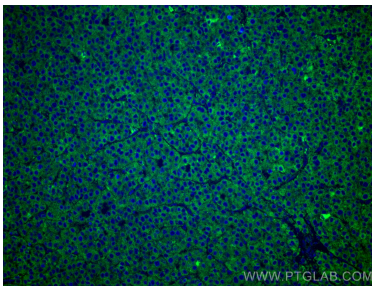
HepG2 cells were subjected to SDS PAGE followed by western blot with 67251-1-Ig (FUCA1 antibody) at dilution of 1:5000 incubated at room temperature for 1.5 hours.



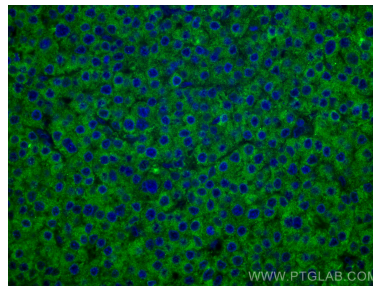
Immunohistochemical analysis of paraffin-embedded human liver cancer tissue slide using 67251-1-Ig (FUCA1 antibody) at dilution of 1:500 (under 10x lens). Heat mediated antigen retrieval with Tris-EDTA buffer (pH 9.0).



Immunohistochemical analysis of paraffin-embedded human liver cancer tissue slide using 67251-1-Ig (FUCA1 antibody) at dilution of 1:500 (under 40x lens). Heat mediated antigen retrieval with Tris-EDTA buffer (pH 9.0).



Immunofluorescent analysis of (4% PFA) fixed human liver cancer tissue using FUCA1 antibody (67251-1-Ig, Clone: 1G5C5) at dilution of 1:400 and CoraLite®488-Conjugated AffiniPure Goat Anti-Mouse IgG(H+L).



Immunofluorescent analysis of (4% PFA) fixed human liver cancer tissue using FUCA1 antibody (67251-1-Ig, Clone: 1G5C5) at dilution of 1:400 and CoraLite®488-Conjugated AffiniPure Goat Anti-Mouse IgG(H+L).