

Nur für Forschungszwecke

BCR Monoklonaler Antikörper

Katalog-Nr.:67260-1-Ig



Allgemeine Informationen

Katalog-Nr.: 67260-1-Ig	GenBank-Zugangsnummer: BC066122	Reinigungsmethode: Protein-A-Reinigung
Größe: 150ul , Konzentration: 1600 µg/ml von613 Nanodrop und 1000 µg/ml durch die Bradford-Methode mit BSA als Standard;	GeneID (NCBI): breakpoint cluster region	CloneNo.: 2C2E3
Wirt: Maus	Berechnete Masse: 143 kDa	Empfohlene Verdünnungen: WB 1:2000-1:10000
Isotyp: IgG2b	Beobachtete Masse: 150-160 kDa	
Immunogen Katalognummer: AG28953		

Anwendungen

Geprüfte Anwendungen: FC, WB, ELISA	Positivkontrollen: WB : Jurkat-Zellen, HEK-293-Zellen, HeLa-Zellen
Getestete Reaktivität: Human, Ratte	

Hintergrundinformationen

The Bcr gene, mapping on chromosome22, was originally identified by its presence in the chimeric Bcr-Abl oncogene. The Bcr gene encodes for the break point cluster region protein(Bcr). Although the BCR-ABL fusion protein has been extensively studied, the function of the normal BCR gene product is not clear. The protein has serine/threonine kinase activity and is a GTPase-activating protein for RAC1 and CDC42. A chromosomal aberration involving BCR has been found in patients with chronic myeloid leukemia.

Lagerung

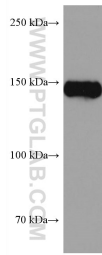
Lagerungsbedingungen:
Bei -20°C lagern. Nach dem Versand ein Jahr lang stabil
Lagerungspuffer:
PBS mit 0.02% Natriumazid und 50% Glycerin pH 7.3.
Aliquotieren ist nicht notwendig bei -20°C Lagerung

***** 20ul-Größen enthalten 0.1% BSA**

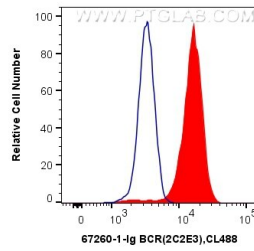
For technical support and original validation data for this product please contact:
T: 1 (888) 4PTGLAB (1-888-478-4522) (toll free in USA), or 1(312) 455-8498 (outside USA)
E: proteintech@ptglab.com
W: ptglab.com

This product is exclusively available under Proteintech Group brand and is not available to purchase from any other manufacturer.

Ausgewählte Validierungsdaten



Jurkat cells were subjected to SDS PAGE followed by western blot with 67260-1-Ig (BCR antibody) at dilution of 1:5000 incubated at room temperature for 1.5 hours.



1X10⁶ K-562 cells were intracellularly stained with 0.4 ug Anti-Human BCR (67260-1-Ig, Clone:2C2E3) and CoraLite®488-Conjugated AffiniPure Goat Anti-Mouse IgG(H+L) at dilution 1:1000 (red), or 0.4 ug Mouse IgG2b Isotype Control (66360-3-Ig, Clone: K11B8C4B5) (blue). Cells were fixed with 4% PFA and permeabilized with Flow Cytometry Perm Buffer (PF00011-C).