

## Allgemeine Informationen

<b>Katalog-Nr.:</b> 67274-1-Ig	<b>GenBank-Zugangsnummer:</b> BC013645	<b>Reinigungsmethode:</b> Protein-A-Reinigung
<b>Größe:</b> 150ul , Konzentration: 2100 µg/ml von11060 Nanodrop und 1000 µg/ml durch die Bradford-Methode mit BSA als Standard;	<b>GeneID (NCBI):</b> 11060	<b>CloneNo.:</b> 2C9B4
<b>Wirt:</b> Maus	<b>Vollständiger Name:</b> WW domain containing E3 ubiquitin protein ligase 2	<b>Empfohlene Verdünnungen:</b> WB 1:500-1:2000 IHC 1:50-1:500
<b>Isotyp:</b> IgG1	<b>Berechnete Masse:</b> 870 aa, 99 kDa	
<b>Immunogen Katalognummer:</b> AG2835	<b>Beobachtete Masse:</b> 100-115 kDa	

## Anwendungen

<b>Geprüfte Anwendungen:</b> IHC, WB,ELISA	<b>Positivkontrollen:</b>
<b>Getestete Reaktivität:</b> Human, Ratte	<b>WB :</b> HEK-293-Zellen, K-562-Zellen, LNCaP-Zellen, MCF-7-Zellen
<b>Hinweis-IHC: Antigenmaskierung mit TE- Puffer pH 9,0 empfohlen. (*) Wahlweise kann die Antigenmaskierung auch mit Citratpuffer pH 6,0 erfolgen.</b>	<b>IHC :</b> humanes Pankreaskarzinomgewebe,

## Hintergrundinformationen

WWP2 (WW domain-containing protein 2) is also named as AIP2 and belongs to the NEDD4-like protein family. It functions as an E3 ubiquitin ligase for PTEN that plays a vital role in tumour-cell survival and is also involved in regulating transcription, embryonic stem-cell fate, cellular transport and T-cell activation processes (PMID:21532586). WWP2, which specifically interacted with ES cell-specific transcription factor Oct-4 and promoted its ubiquitination both in vitro and in vivo, is a ubiquitously expressed protein and exists in both cytoplasmic and nuclear compartments in ES cells (PMID:15047715).

## Lagerung

**Lagerungsbedingungen:**  
Bei -20°C lagern.  
**Lagerungspuffer:**  
PBS mit 0.02% Natriumazid und 50% Glycerin pH 7.3.  
**Aliquotieren ist nicht notwendig bei -20°C Lagerung**

\*\*\* 20ul-Größen enthalten 0.1% BSA

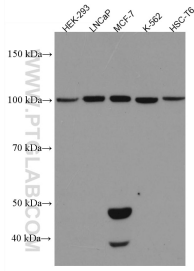
For technical support and original validation data for this product please contact:

T: 1 (888) 4PTGLAB (1-888-478-4522) (toll free  
in USA), or 1(312) 455-8498 (outside USA)

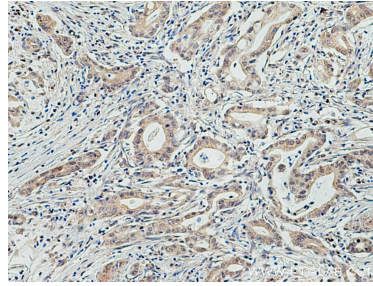
E: proteintech@ptglab.com  
W: ptglab.com

This product is exclusively available under Proteintech Group brand and is not available to purchase from any other manufacturer.

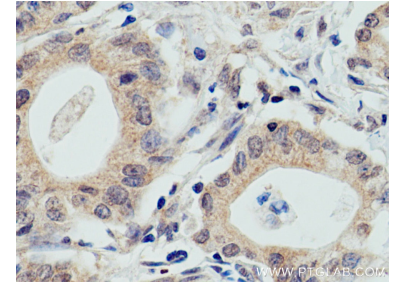
## Ausgewählte Validierungsdaten



Various lysates were subjected to SDS PAGE followed by western blot with 67274-1-Ig (WWP2 antibody) at dilution of 1:1000 incubated at room temperature for 1.5 hours.



Immunohistochemical analysis of paraffin-embedded human pancreas cancer tissue slide using 67274-1-Ig (WWP2 antibody) at dilution of 1:200 (under 10x lens). Heat mediated antigen retrieval with Tris-EDTA buffer (pH 9.0).



Immunohistochemical analysis of paraffin-embedded human pancreas cancer tissue slide using 67274-1-Ig (WWP2 antibody) at dilution of 1:200 (under 40x lens). Heat mediated antigen retrieval with Tris-EDTA buffer (pH 9.0).