

Nur für Forschungszwecke

# Collagen Type I Monoklonaler Antikörper



Katalog-Nr.: 67288-1-Ig **96 Publikationen**

## Allgemeine Informationen

<b>Katalog-Nr.:</b> 67288-1-Ig	<b>GenBank-Zugangsnummer:</b> NM_000088	<b>Reinigungsmethode:</b> Protein-A-Reinigung
<b>Größe:</b> 150ul, Konzentration: 1000 µg/ml von 1277 Nanodrop und 540 µg/ml durch die Bradford-Methode mit BSA als Standard;	<b>GeneID (NCBI):</b> Vollständiger Name: collagen, type I, alpha 1	<b>CloneNo.:</b> 1E9A7
<b>Wirt:</b> Maus	<b>Berechnete Masse:</b> 139 kDa	<b>Empfohlene Verdünnungen:</b> WB 1:5000-1:50000 IHC 1:2500-1:10000 IF 1:200-1:800
<b>Isotyp:</b> IgG1	<b>Beobachtete Masse:</b> 120-130 kDa	

## Anwendungen

### Gepriüfte Anwendungen:

IF, IHC, WB, ELISA

### In Publikationen genannte Anwendungen:

IF, IHC, WB

### Getestete Reaktivität:

Hausschwein, Human

### Zitierte Arten:

Human

**Hinweis-IHC: Antigendemaskierung mit TE-Puffer pH 9,0 empfohlen. (\*) Wahlweise kann die Antigendemaskierung auch mit Citratpuffer pH 6,0 erfolgen.**

### Positivkontrollen:

**WB:** Hausschwein-Kolongewebe, Hausschwein-Hautgewebe, Hausschwein-Lungengewebe, humanes Plazenta-Gewebe, humanes Zervixkarzinomgewebe

**IHC:** humanes Mammakarzinomgewebe, humanes Kolongewebe, humanes Kolonkarzinomgewebe

**IF:** humanes Kolonkarzinomgewebe,

## Hintergrundinformationen

Type I collagen, the major structural component of connective tissues such as skin, tendon and bone, is the most abundant and widely expressed collagen in humans (PMID: 7620364; 8645190; 9016532). Type I collagen is a heterotrimer comprising one alpha 2(I) and two alpha 1(I) chains which are encoded by the unlinked loci COL1A2 and COL1A1 respectively. Mutations in COL1A1 are associated with osteogenesis imperfecta types I-IV, Ehlers-Danlos syndrome type VIIA, Ehlers-Danlos syndrome Classical type, Caffey Disease and idiopathic osteoporosis. This antibody raised against a synthesized peptide corresponding to 1206-1218 aa of human pro-alpha 1 chain of type I collagen recognize collagen alpha-1(I) chain.

## Bemerkenswerte Veröffentlichungen

Verfasser	Pubmed ID	Journal	Anwendung
Siyuan Dong	33062455	PeerJ	IHC
Fei Yao	36163271	Inflamm Regen	WB
Xia Niu	34681175	Pharmaceuticals (Basel)	WB

## Lagerung

### Lagerungsbedingungen:

Bei -20°C lagern.

### Lagerungspuffer:

PBS mit 0.02% Natriumazid und 50% Glycerin pH 7.3.

Aliquotieren ist nicht notwendig bei -20°C Lagerung

**\*\*\* 20ul-Größen enthalten 0.1% BSA**

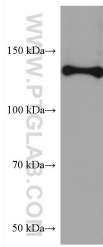
For technical support and original validation data for this product please contact:

T: 1 (888) 4PTGLAB (1-888-478-4522) (toll free in USA), or 1(312) 455-8498 (outside USA)

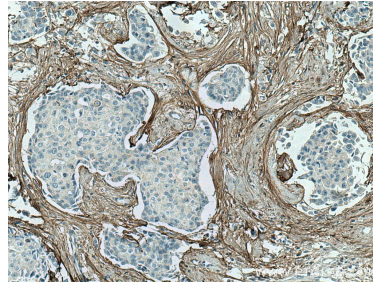
E: proteintech@ptglab.com  
W: ptglab.com

**This product is exclusively available under Proteintech Group brand and is not available to purchase from any other manufacturer.**

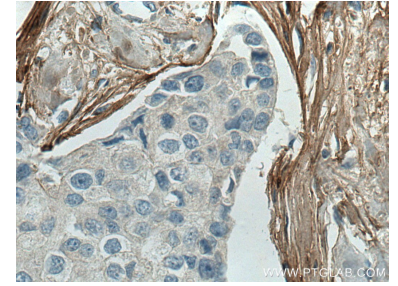
## Ausgewählte Validierungsdaten



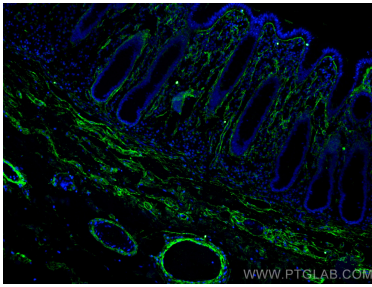
pig colon tissue were subjected to SDS PAGE followed by western blot with 67288-1-Ig (Collagen Type I antibody) at dilution of 1:10000 incubated at room temperature for 1.5 hours.



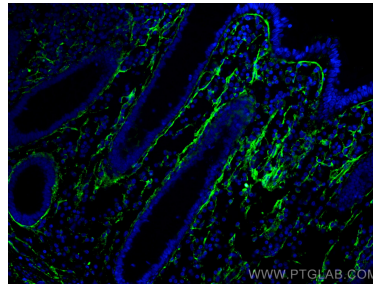
Immunohistochemical analysis of paraffin-embedded human breast cancer tissue slide using 67288-1-Ig (Collagen Type I antibody) at dilution of 1:5000 (under 10x lens). Heat mediated antigen retrieval with Tris-EDTA buffer (pH 9.0).



Immunohistochemical analysis of paraffin-embedded human breast cancer tissue slide using 67288-1-Ig (Collagen Type I antibody) at dilution of 1:5000 (under 40x lens). Heat mediated antigen retrieval with Tris-EDTA buffer (pH 9.0).



Immunofluorescent analysis of (4% PFA) fixed human colon cancer tissue using Collagen Type I antibody (67288-1-Ig, Clone: 1E9A7) at dilution of 1:400 and CoraLite®488-Conjugated AffiniPure Goat Anti-Mouse IgG(H+L).



Immunofluorescent analysis of (4% PFA) fixed human colon cancer tissue using Collagen Type I antibody (67288-1-Ig, Clone: 1E9A7) at dilution of 1:400 and CoraLite®488-Conjugated AffiniPure Goat Anti-Mouse IgG(H+L).