

Nur für Forschungszwecke

# WFS1 Monoklonaler Antikörper

Katalog-Nr.:67291-1-Ig



## Allgemeine Informationen

<b>Katalog-Nr.:</b> 67291-1-Ig	<b>GenBank-Zugangsnummer:</b> BC030130	<b>Reinigungsmethode:</b> Protein-G-Reinigung
<b>Größe:</b> 150ul , Konzentration: 2735 µg/ml von7466 Nanodrop und 1000 µg/ml durch die Bradford-Methode mit BSA als Standard;	<b>GeneID (NCBI):</b> Wolfram syndrome 1 (wolframin)	<b>CloneNo.:</b> 4C2B5
<b>Wirt:</b> Maus	<b>Berechnete Masse:</b> 890 aa, 100 kDa	<b>Empfohlene Verdünnungen:</b> WB 1:1000-1:5000
<b>Isotyp:</b> IgG1	<b>Beobachtete Masse:</b> 100 kDa	
<b>Immunogen Katalognummer:</b> AG25735		

## Anwendungen

<b>Geprüfte Anwendungen:</b> WB, ELISA	<b>Positivkontrollen:</b> WB : HeLa-Zellen, C6-Zellen, HEK-293-Zellen, Neuro- 2a-Zellen, PC-12-Zellen, SH-SY5Y-Zellen, U-251-Zellen
<b>Getestete Reaktivität:</b> Hausschwein, Human, Maus, Ratte	

## Hintergrundinformationen

Wolfram syndrome protein (WFS1), also called wolframin, is a transmembrane protein, which is located primarily in the endoplasmic reticulum and its expression is induced in response to ER stress, partially through transcriptional activation. ER localization suggests that WFS1 protein has physiological functions in membrane trafficking, secretion, processing and/or regulation of ER calcium homeostasis. It is ubiquitously expressed with highest levels in brain, pancreas, heart, and insulinoma beta-cell lines. Mutations of the WFS1 gene are responsible for two hereditary diseases, autosomal recessive Wolfram syndrome and autosomal dominant low frequency sensorineural hearing loss.

## Lagerung

**Lagerungsbedingungen:**  
Bei -20°C lagern. Nach dem Versand ein Jahr lang stabil  
**Lagerungspuffer:**  
PBS mit 0.02% Natriumazid und 50% Glycerin pH 7.3.  
Aliquotieren ist nicht notwendig bei -20°C Lagerung

**\*\*\* 20ul-Größen enthalten 0.1% BSA**

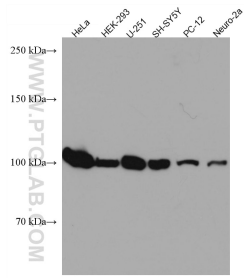
For technical support and original validation data for this product please contact:

T: 1 (888) 4PTGLAB (1-888-478-4522) (toll free  
in USA), or 1(312) 455-8498 (outside USA)

E: proteintech@ptglab.com  
W: ptglab.com

**This product is exclusively available under Proteintech Group brand and is not available to purchase from any other manufacturer.**

## Ausgewählte Validierungsdaten



Various lysates were subjected to SDS PAGE followed by western blot with 67291-1-Ig (WFS1 antibody) at dilution of 1:3000 incubated at room temperature for 1.5 hours.